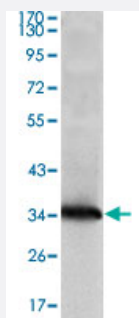


NME1 monoclonal antibody, clone 4B2

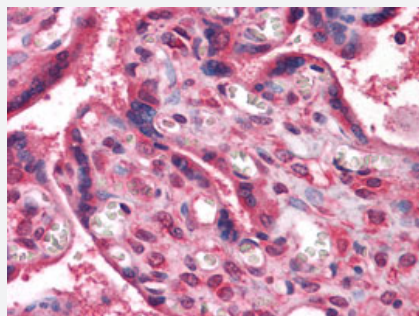
Catalog # MAB10833 Size 100 uL

Applications



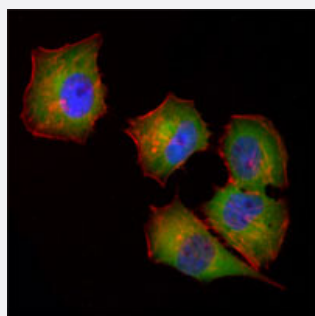
Western Blot (Transfected lysate)

Western blot analysis using NME1 monoclonal antibody, clone 4B2 (Cat # MAB10833) against NME1-hlgGFc transfected HEK293 cell lysate.



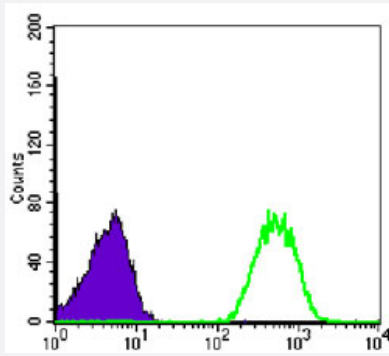
Immunohistochemistry (Formalin/PFA-fixed paraffin-embedded sections)

Immunohistochemical analysis of paraffin-embedded human placenta tissues using NME1 monoclonal antibody, clone 4B2 (Cat # MAB10833).



Immunofluorescence

Immunofluorescence analysis of HeLa cells using NME1 monoclonal antibody, clone 4B2 (Cat # MAB10833) (green). Red: Actin filaments have been labeled with Alexa Fluor-555 phalloidin. Blue: DRAQ5 fluorescent DNA dye.



Flow Cytometry

Flow cytometric analysis of Jurkat cells using NME1 monoclonal antibody, clone 4B2 (Cat # MAB10833) (green) and negative control (purple).

Specification

Product Description	Mouse monoclonal antibody raised against partial recombinant NME1.
Immunogen	Recombinant protein corresponding to human NME1.
Host	Mouse
Reactivity	Human
Form	Liquid
Isotype	IgG1
Recommend Usage	ELISA (1:10000) Western Blot (1:500-1:2000) Immunohistochemistry (1:200-1:1000) Immunofluorescence (1:200-1:1000) Flow cytometry (1:200-1:400) The optimal working dilution should be determined by the end user.
Storage Buffer	In ascites (0.03% sodium azide)
Storage Instruction	Store at 4°C. For long term storage store at -20°C. Aliquot to avoid repeated freezing and thawing.
Note	This product contains sodium azide: a POISONOUS AND HAZARDOUS SUBSTANCE which should be handled by trained staff only.

Applications

- Western Blot (Transfected lysate)

Western blot analysis using NME1 monoclonal antibody, clone 4B2 (Cat # MAB10833) against NME1-hlgGFc transfected HEK293 cell lysate.

- Immunohistochemistry (Formalin/PFA-fixed paraffin-embedded sections)

Immunohistochemical analysis of paraffin-embedded human placenta tissues using NME1 monoclonal antibody, clone 4B2 (Cat # MAB10833).

- Immunofluorescence

Immunofluorescence analysis of HeLa cells using NME1 monoclonal antibody, clone 4B2 (Cat # MAB10833) (green). Red: Actin filaments have been labeled with Alexa Fluor-555 phalloidin. Blue: DRAQ5 fluorescent DNA dye.

- Enzyme-linked Immunoabsorbent Assay

- Flow Cytometry

Flow cytometric analysis of Jurkat cells using NME1 monoclonal antibody, clone 4B2 (Cat # MAB10833) (green) and negative control (purple).

Gene Info — NME1

Entrez GeneID [4830](#)

Gene Name NME1

Gene Alias AWD, GAAD, NB, NBS, NDPK-A, NDPKA, NM23, NM23-H1

Gene Description non-metastatic cells 1, protein (NM23A) expressed in

Omim ID [156490](#) [256700](#)

Gene Ontology [Hyperlink](#)

Gene Summary This gene (NME1) was identified because of its reduced mRNA transcript levels in highly metastatic cells. Nucleoside diphosphate kinase (NDK) exists as a hexamer composed of 'A' (encoded by this gene) and 'B' (encoded by NME2) isoforms. Mutations in this gene have been identified in aggressive neuroblastomas. Two transcript variants encoding different isoforms have been found for this gene. Co-transcription of this gene and the neighboring downstream gene (NME2) generates naturally-occurring transcripts (NME1-NME2), which encodes a fusion protein comprised of sequence sharing identity with each individual gene product. [provided by RefSeq]

Other Designations NDP kinase A|OTTHUMP00000174772

Pathway

- [Metabolic pathways](#)
- [Purine metabolism](#)
- [Pyrimidine metabolism](#)

Disease

- [Breast cancer](#)
- [Breast Neoplasms](#)
- [Carcinoma](#)
- [Endometrial Neoplasms](#)
- [Genetic Predisposition to Disease](#)
- [Lung Neoplasms](#)
- [Neoplasm Metastasis](#)