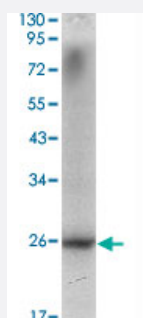


NKX3-1 monoclonal antibody, clone 4H4

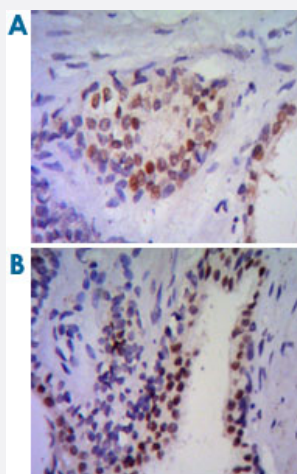
Catalog # MAB10832 Size 100 uL

Applications



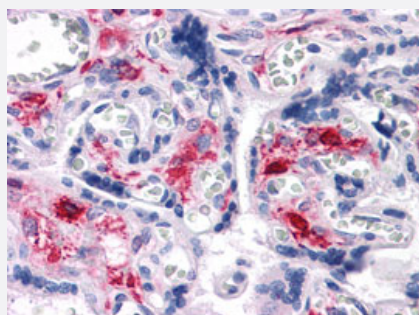
Western Blot (Cell lysate)

Western blot analysis using NKX3-1 monoclonal antibody, clone 4H4 (Cat # MAB10832) against LNCaP cell lysate.



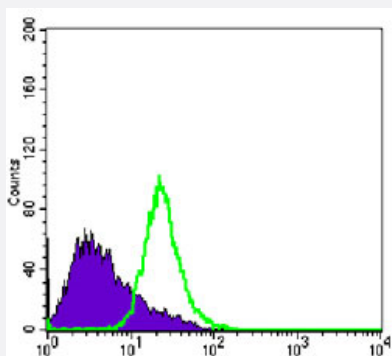
Immunohistochemistry (Formalin/PFA-fixed paraffin-embedded sections)

Immunohistochemical analysis of paraffin-embedded human prostate tissues (A, B) using NKX3-1 monoclonal antibody, clone 4H4 (Cat # MAB10832) with DAB staining.



Immunohistochemistry (Formalin/PFA-fixed paraffin-embedded sections)

Immunohistochemical analysis of paraffin-embedded human liver tissues using NKX3-1 monoclonal antibody, clone 4H4 (Cat # MAB10832).



Flow Cytometry

Flow cytometric analysis of PC-3 cells using NKX3-1 monoclonal antibody, clone 4H4 (Cat # MAB10832) (green) and negative control (purple).

Specification

Product Description	Mouse monoclonal antibody raised against partial recombinant NKX3-1.
Immunogen	Recombinant protein corresponding to human NKX3-1.
Host	Mouse
Reactivity	Human
Form	Liquid
Isotype	IgG2b
Recommend Usage	ELISA (1:10000) Western Blot (1:500-1:2000) Immunohistochemistry (1:200-1:1000) Flow cytometry (1:200-1:400) The optimal working dilution should be determined by the end user.
Storage Buffer	In ascites (0.03% sodium azide)
Storage Instruction	Store at 4°C. For long term storage store at -20°C. Aliquot to avoid repeated freezing and thawing.
Note	This product contains sodium azide: a POISONOUS AND HAZARDOUS SUBSTANCE which should be handled by trained staff only.

Applications

- Western Blot (Cell lysate)

Western blot analysis using NKX3-1 monoclonal antibody, clone 4H4 (Cat # MAB10832) against LNCaP cell lysate.

- Immunohistochemistry (Formalin/PFA-fixed paraffin-embedded sections)

Immunohistochemical analysis of paraffin-embedded human prostate tissues (A, B) using NKX3-1 monoclonal antibody, clone 4H4 (Cat # MAB10832) with DAB staining.

- Immunohistochemistry (Formalin/PFA-fixed paraffin-embedded sections)

Immunohistochemical analysis of paraffin-embedded human liver tissues using NKX3-1 monoclonal antibody, clone 4H4 (Cat # MAB10832).

- Enzyme-linked Immunoabsorbent Assay

- Flow Cytometry

Flow cytometric analysis of PC-3 cells using NKX3-1 monoclonal antibody, clone 4H4 (Cat # MAB10832) (green) and negative control (purple).

Gene Info — NKX3-1

Entrez GeneID [4824](#)

Gene Name NKX3-1

Gene Alias BAPX2, NKX3, NKX3.1, NKX3A

Gene Description NK3 homeobox 1

Omim ID [602041](#)

Gene Ontology [Hyperlink](#)

Gene Summary The homeodomain-containing transcription factor NKX3-1 is a putative prostate tumor suppressor that is expressed in a largely prostate-specific and androgen-regulated manner. Loss of NKX3-1 protein expression is a common finding in human prostate carcinomas and prostatic intraepithelial neoplasia.[supplied by OMIM]

Other Designations NK homeobox, family 3, A|NK3 transcription factor homolog A|NK3 transcription factor related, locus 1|OTTHUMP00000123534

Pathway

- [Pathways in cancer](#)

- [Prostate cancer](#)

Disease

- [Disease Susceptibility](#)
- [Genetic Predisposition to Disease](#)
- [Ovarian cancer](#)
- [Prostate cancer](#)
- [Prostatic Neoplasms](#)