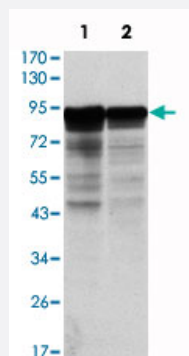


NEFL monoclonal antibody, clone 1H3

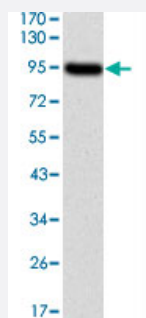
Catalog # MAB10827 Size 100 ug

Applications



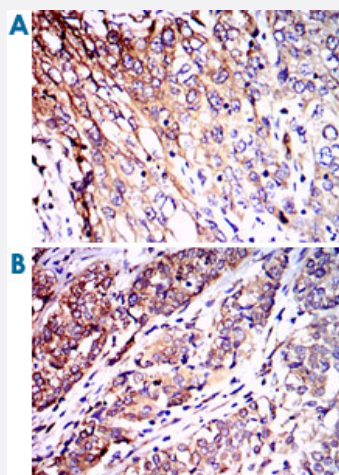
Western Blot (Cell lysate)

Western blot analysis using NEFL monoclonal antibody, clone 1H3 (Cat # MAB10827) against HeLa (1) and Jurkat (2) cell lysate.



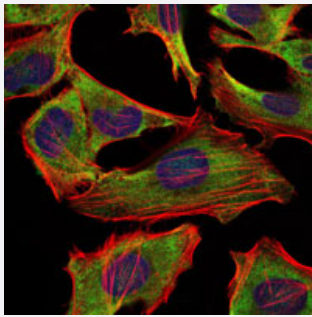
Western Blot (Recombinant protein)

Western blot analysis using NEFL monoclonal antibody, clone 1H3 (Cat # MAB10827) against human NEFL (aa: 422-543) recombinant protein. (Expected MW is 62 kDa)



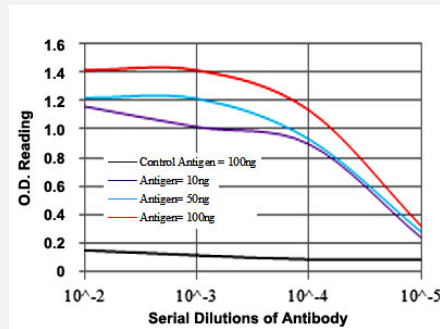
Immunohistochemistry (Formalin/PFA-fixed paraffin-embedded sections)

Immunohistochemical analysis of paraffin-embedded human lung cancer (A) and human bladder cancer (B) tissues using NEFL monoclonal antibody, clone 1H3 (Cat # MAB10827) with DAB staining.



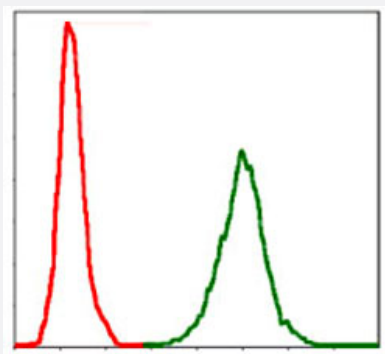
Immunofluorescence

Immunofluorescence analysis of HeLa cells using NEFL monoclonal antibody, clone 1H3 (Cat # MAB10827) (green). Blue: DRAQ5 fluorescent DNA dye. Red: Actin filaments have been labeled with Alexa Fluor-555 phalloidin.



Enzyme-linked Immunoabsorbent Assay

ELISA measurement of NEFL monoclonal antibody, clone 1H3 (Cat # MAB10827).



Flow Cytometry

Flow cytometric analysis of Jurkat cells using NEFL monoclonal antibody, clone 1H3 (Cat # MAB10827) (green) and negative control (red).

Specification

Product Description	Mouse monoclonal antibody raised against partial recombinant NEFL.
Immunogen	Recombinant protein corresponding to human NEFL.
Host	Mouse
Reactivity	Human
Form	Liquid
Isotype	IgG1

Recommend Usage	ELISA (1:10000) Western Blot (1:500-1:2000) Immunohistochemistry (1:200-1:1000) Immunofluorescence (1:200-1:1000) Flow cytometry (1:200-1:400) The optimal working dilution should be determined by the end user.
Storage Buffer	In PBS (0.05% sodium azide)
Storage Instruction	Store at 4°C. For long term storage store at -20°C. Aliquot to avoid repeated freezing and thawing.
Note	This product contains sodium azide: a POISONOUS AND HAZARDOUS SUBSTANCE which should be handled by trained staff only.

Applications

- Western Blot (Cell lysate)

Western blot analysis using NEFL monoclonal antibody, clone 1H3 (Cat # MAB10827) against HeLa (1) and Jurkat (2) cell lysate.

- Western Blot (Recombinant protein)

Western blot analysis using NEFL monoclonal antibody, clone 1H3 (Cat # MAB10827) against human NEFL (aa: 422-543) recombinant protein. (Expected MW is 62 kDa)

- Immunohistochemistry (Formalin/PFA-fixed paraffin-embedded sections)

Immunohistochemical analysis of paraffin-embedded human lung cancer (A) and human bladder cancer (B) tissues using NEFL monoclonal antibody, clone 1H3 (Cat # MAB10827) with DAB staining.

- Immunofluorescence

Immunofluorescence analysis of HeLa cells using NEFL monoclonal antibody, clone 1H3 (Cat # MAB10827) (green). Blue: DRAQ5 fluorescent DNA dye. Red: Actin filaments have been labeled with Alexa Fluor-555 phalloidin.

- Enzyme-linked Immunoabsorbent Assay

ELISA measurement of NEFL monoclonal antibody, clone 1H3 (Cat # MAB10827).

- Flow Cytometry

Flow cytometric analysis of Jurkat cells using NEFL monoclonal antibody, clone 1H3 (Cat # MAB10827) (green) and negative control (red).

Gene Info — NEFL

Entrez GeneID	4747
Gene Name	NEFL
Gene Alias	CMT1F, CMT2E, FLJ53642, NF-L, NF68, NFL
Gene Description	neurofilament, light polypeptide
Omim ID	162280 607684 607734
Gene Ontology	Hyperlink
Gene Summary	Neurofilaments are type IV intermediate filament heteropolymers composed of light, medium, and heavy chains. Neurofilaments comprise the axoskeleton and they functionally maintain the neuronal caliber. They may also play a role in intracellular transport to axons and dendrites. This gene encodes the light chain neurofilament protein. Mutations in this gene cause Charcot-Marie-Tooth disease types 1F (CMT1F) and 2E (CMT2E), disorders of the peripheral nervous system that are characterized by distinct neuropathies. A pseudogene has been identified on chromosome Y. [provided by RefSeq]
Other Designations	light molecular weight neurofilament protein neurofilament protein, light chain neurofilament subunit NF-L neurofilament triplet L protein neurofilament, light polypeptide 68kDa neurofilament-light

Pathway

- [Amyotrophic lateral sclerosis \(ALS\)](#)

Disease

- [Genetic Predisposition to Disease](#)
- [Kidney Failure](#)
- [Multiple Sclerosis](#)
- [Parkinson disease](#)