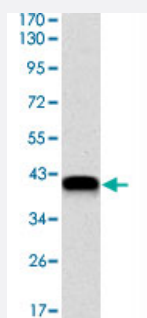


NEDD8 monoclonal antibody, clone 1A7

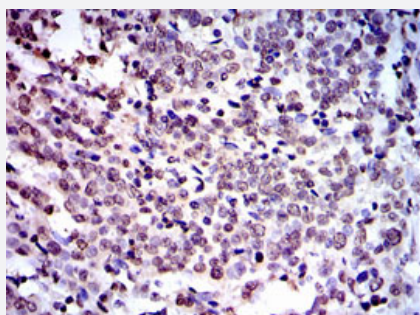
Catalog # MAB10825 Size 100 ug

Applications



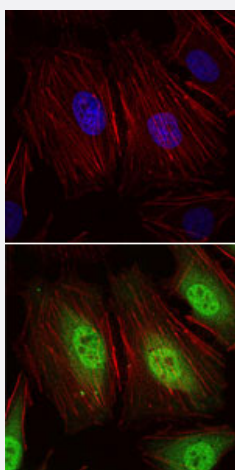
Western Blot (Recombinant protein)

Western blot analysis using NEDD8 monoclonal antibody, clone 1A7 (Cat # MAB10825) against human NEDD8 (aa: 1-81) recombinant protein. (Expected MW is 40 kDa)



Immunohistochemistry (Formalin/PFA-fixed paraffin-embedded sections)

Immunohistochemical analysis of paraffin-embedded human cervical cancer tissues using NEDD8 monoclonal antibody, clone 1A7 (Cat # MAB10825) with DAB staining.

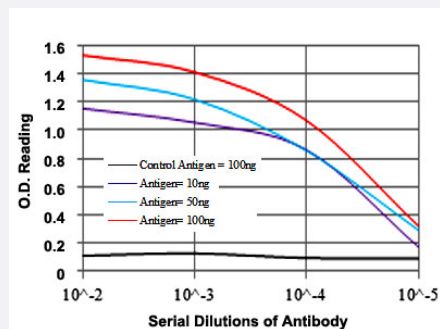


Immunofluorescence

Immunofluorescence analysis of HeLa cells using NEDD8 monoclonal antibody, clone 1A7 (Cat # MAB10825) (green). Blue: DAPI fluorescent DNA dye. Red: Actin filaments have been labeled with Alexa Fluor-555 phalloidin.

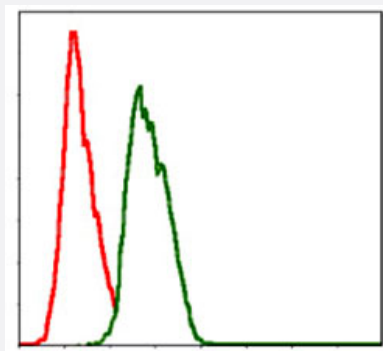
Enzyme-linked Immunoabsorbent Assay

ELISA measurement of NEDD8 monoclonal antibody, clone 1A7 (Cat # MAB10825).



Flow Cytometry

Flow cytometric analysis of HeLa cells using NEDD8 monoclonal antibody, clone 1A7 (Cat # MAB10825) (green) and negative control (red).



Specification

Product Description Mouse monoclonal antibody raised against partial recombinant NEDD8.

Immunogen Recombinant protein corresponding to human NEDD8.

Host Mouse

Reactivity Human

Form Liquid

Isotype IgG1

Recommend Usage

- ELISA (1:10000)
- Western Blot (1:500-1:2000)
- Immunohistochemistry (1:200-1:1000)
- Immunofluorescence (1:200-1:1000)
- Flow cytometry (1:200-1:400)
- The optimal working dilution should be determined by the end user.

Storage Buffer In PBS (0.05% sodium azide)

Storage Instruction

- Store at 4°C. For long term storage store at -20°C.
- Aliquot to avoid repeated freezing and thawing.

Note

This product contains sodium azide: a POISONOUS AND HAZARDOUS SUBSTANCE which should be handled by trained staff only.

Applications

- Western Blot (Recombinant protein)

Western blot analysis using NEDD8 monoclonal antibody, clone 1A7 (Cat # MAB10825) against human NEDD8 (aa: 1-81) recombinant protein. (Expected MW is 40 kDa)

- Immunohistochemistry (Formalin/PFA-fixed paraffin-embedded sections)

Immunohistochemical analysis of paraffin-embedded human cervical cancer tissues using NEDD8 monoclonal antibody, clone 1A7 (Cat # MAB10825) with DAB staining.

- Immunofluorescence

Immunofluorescence analysis of HeLa cells using NEDD8 monoclonal antibody, clone 1A7 (Cat # MAB10825) (green). Blue: DRAQ5 fluorescent DNA dye. Red: Actin filaments have been labeled with Alexa Fluor-555 phalloidin.

- Enzyme-linked Immunoabsorbent Assay

ELISA measurement of NEDD8 monoclonal antibody, clone 1A7 (Cat # MAB10825).

- Flow Cytometry

Flow cytometric analysis of HeLa cells using NEDD8 monoclonal antibody, clone 1A7 (Cat # MAB10825) (green) and negative control (red).

Gene Info — NEDD8

Entrez GeneID [4738](#)

Gene Name NEDD8

Gene Alias FLJ43224, MGC104393, MGC125896, MGC125897, Nedd-8

Gene Description neural precursor cell expressed, developmentally down-regulated 8

Omim ID [603171](#)

Gene Ontology [Hyperlink](#)

Gene Summary O

Other Designations -