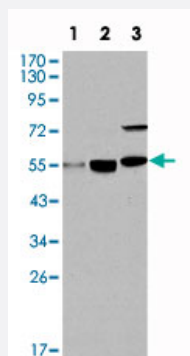


MYST1 monoclonal antibody, clone 8C4C4

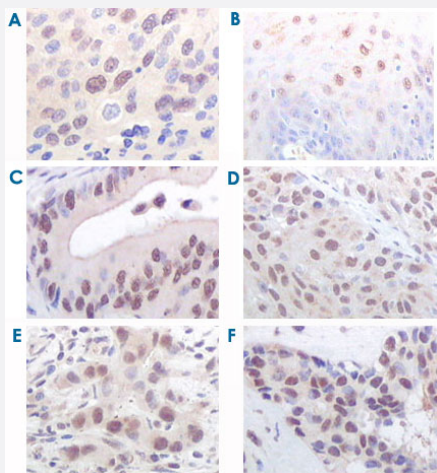
Catalog # MAB10823 Size 100 uL

Applications



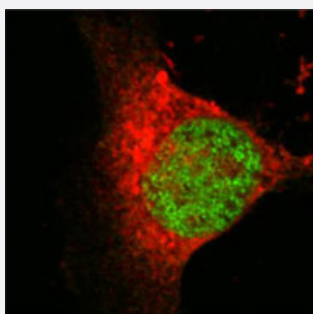
Western Blot (Cell lysate)

Western blot analysis using MYST1 monoclonal antibody, clone 8C4C4 (Cat # MAB10823) against HeLa (1), HepG2 (2) and SMMC-7721 (3) cell lysate.



Immunohistochemistry (Formalin/PFA-fixed paraffin-embedded sections)

Immunohistochemical analysis of paraffin-embedded human esophageal squamous cell carcinoma (A), normal esophagus epithelium (B), rectum adenocarcinoma (C), lung squamous cell carcinoma (D), breast infiltrating carcinoma (E), and breast infiltrating carcinoma (F) tissues, showing nuclear localization using MYST1 monoclonal antibody, clone 8C4C4 (Cat # MAB10823) with DAB staining.



Immunofluorescence

Confocal immunofluorescence analysis of Eca-109 cells using MYST1 monoclonal antibody, clone 8C4C4 (Cat # MAB10823) (green), showing nuclear localization.

Specification

Product Description	Mouse monoclonal antibody raised against partial recombinant MYST1.
Immunogen	Recombinant protein corresponding to human MYST1.
Host	Mouse
Reactivity	Human
Form	Liquid
Isotype	IgG2b
Recommend Usage	ELISA (1:10000) Western Blot (1:500-1:2000) Immunohistochemistry (1:200-1:1000) Immunofluorescence (1:200-1:1000) The optimal working dilution should be determined by the end user.
Storage Buffer	In ascites (0.03% sodium azide)
Storage Instruction	Store at 4°C. For long term storage store at -20°C. Aliquot to avoid repeated freezing and thawing.
Note	This product contains sodium azide: a POISONOUS AND HAZARDOUS SUBSTANCE which should be handled by trained staff only.

Applications

- Western Blot (Cell lysate)

Western blot analysis using MYST1 monoclonal antibody, clone 8C4C4 (Cat # MAB10823) against HeLa (1), HepG2 (2) and SMMC-7721 (3) cell lysate.

- Immunohistochemistry (Formalin/PFA-fixed paraffin-embedded sections)

Immunohistochemical analysis of paraffin-embedded human esophageal squamous cell carcinoma (A), normal esophagus epithelium (B), rectum adenocarcinoma (C), lung squamous cell carcinoma (D), breast infiltrating carcinoma (E), and breast infiltrating carcinoma (F) tissues, showing nuclear localization using MYST1 monoclonal antibody, clone 8C4C4 (Cat # MAB10823) with DAB staining.

- Immunofluorescence

Confocal immunofluorescence analysis of Eca-109 cells using MYST1 monoclonal antibody, clone 8C4C4 (Cat # MAB10823) (green), showing nuclear localization.

- Enzyme-linked Immunoabsorbent Assay

Gene Info — MYST1

Entrez GeneID [84148](#)**Gene Name** MYST1**Gene Alias** FLJ14040, KAT8, MOF, hMOF**Gene Description** MYST histone acetyltransferase 1**Omim ID** [609912](#)**Gene Ontology** [Hyperlink](#)

Gene Summary The MYST family of histone acetyltransferases, which includes MYST1, is named for the founding members MOZ (MYST3; MIM 601408), yeast YBF2 and SAS2, and TIP60 (HTATIP; MIM 601409). All members of this family contain a MYST region of about 240 amino acids with a canonical acetyl-CoA-binding site and a C2HC-type zinc finger motif. Most MYST proteins also have a chromodomain involved in protein-protein interactions and targeting transcriptional regulators to chromatin (Neal et al., 2000 [PubMed 10786633]).[supplied by OMIM]

Other Designations histone acetyltransferase MYST1|ortholog of Drosophila males absent on the first (MOF)

Disease

- [Cardiovascular Diseases](#)
- [Diabetes Mellitus](#)
- [Edema](#)