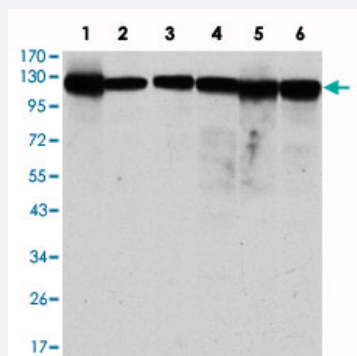


MCM2 monoclonal antibody, clone 1E7

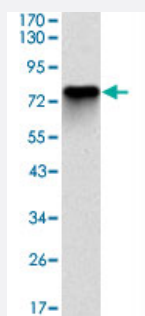
Catalog # MAB10806 Size 100 uL

Applications



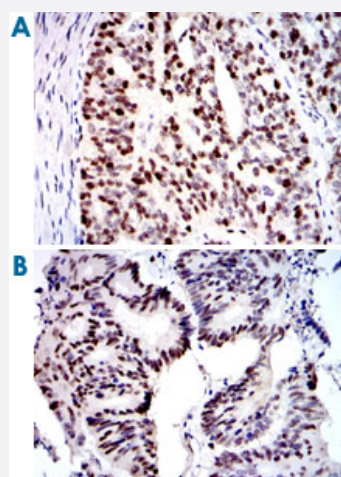
Western Blot (Cell lysate)

Western blot analysis using MCM2 monoclonal antibody, clone 1E7 (Cat # MAB10806) against MCF-7 (1), HeLa (2), Jurkat (3), K-562 (4), HEK293 (5) and HEPG2 (6) cell lysate.



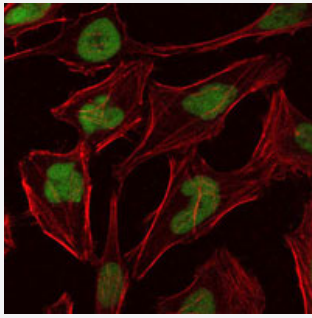
Western Blot (Recombinant protein)

Western blot analysis using MCM2 monoclonal antibody, clone 1E7 (Cat # MAB10806) against human MCM2 (aa: 16-232) recombinant protein. (Expected MW is 50.4 kDa)



Immunohistochemistry (Formalin/PFA-fixed paraffin-embedded sections)

Immunohistochemical analysis of paraffin-embedded human ovarian cancer (A) and human colon cancer (B) tissues using MCM2 monoclonal antibody, clone 1E7 (Cat # MAB10806) with DAB staining.

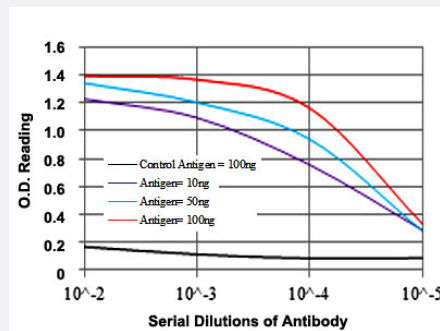


Immunofluorescence

Immunofluorescence analysis of HeLa cells using MCM2 monoclonal antibody, clone 1E7 (Cat # MAB10806) (green). Blue: DRAQ5 fluorescent DNA dye. Red: Actin filaments have been labeled with Alexa Fluor-555 phalloidin. MCM2 monoclonal antibody, clone 1E7 (Cat # MAB10806) (green). Blue: DRAQ5 fluorescent DNA dye. Red: Actin filaments have been labeled with Alexa Fluor-555 phalloidin.

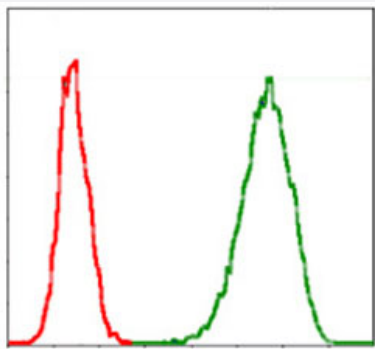
Enzyme-linked Immunoabsorbent Assay

ELISA measurement of MCM2 monoclonal antibody, clone 1E7 (Cat # MAB10806).



Flow Cytometry

Flow cytometric analysis of Jurkat cells using MCM2 monoclonal antibody, clone 1E7 (Cat # MAB10806) (green) and negative control (red).



Specification

Product Description	Mouse monoclonal antibody raised against partial recombinant MCM2.
Immunogen	Recombinant protein corresponding to human MCM2.
Host	Mouse
Reactivity	Human
Form	Liquid
Isotype	IgG1

Recommend Usage	ELISA (1:10000) Western Blot (1:500-1:2000) Immunohistochemistry (1:200-1:1000) Immunofluorescence (1:200-1:1000) Flow cytometry (1:200-1:400) The optimal working dilution should be determined by the end user.
Storage Buffer	In ascites (0.03% sodium azide)
Storage Instruction	Store at 4°C. For long term storage store at -20°C. Aliquot to avoid repeated freezing and thawing.
Note	This product contains sodium azide: a POISONOUS AND HAZARDOUS SUBSTANCE which should be handled by trained staff only.

Applications

- Western Blot (Cell lysate)

Western blot analysis using MCM2 monoclonal antibody, clone 1E7 (Cat # MAB10806) against MCF-7 (1), HeLa (2), Jurkat (3), K-562 (4), HEK293 (5) and HEPG2 (6) cell lysate.

- Western Blot (Recombinant protein)

Western blot analysis using MCM2 monoclonal antibody, clone 1E7 (Cat # MAB10806) against human MCM2 (aa: 16-232) recombinant protein. (Expected MW is 50.4 kDa)

- Immunohistochemistry (Formalin/PFA-fixed paraffin-embedded sections)

Immunohistochemical analysis of paraffin-embedded human ovarian cancer (A) and human colon cancer (B) tissues using MCM2 monoclonal antibody, clone 1E7 (Cat # MAB10806) with DAB staining.

- Immunofluorescence

Immunofluorescence analysis of HeLa cells using MCM2 monoclonal antibody, clone 1E7 (Cat # MAB10806) (green). Blue: DRAQ5 fluorescent DNA dye. Red: Actin filaments have been labeled with Alexa Fluor-555 phalloidin. MCM2 monoclonal antibody, clone 1E7 (Cat # MAB10806) (green). Blue: DRAQ5 fluorescent DNA dye. Red: Actin filaments have been labeled with Alexa Fluor-555 phalloidin.

- Enzyme-linked Immunoabsorbent Assay

ELISA measurement of MCM2 monoclonal antibody, clone 1E7 (Cat # MAB10806).

- Flow Cytometry

Flow cytometric analysis of Jurkat cells using MCM2 monoclonal antibody, clone 1E7 (Cat # MAB10806) (green) and negative control (red).

Gene Info — MCM2

Entrez GeneID	4171
Gene Name	MCM2
Gene Alias	BM28, CCNL1, CDCL1, D3S3194, KIAA0030, MGC10606, MITOTIN, cdc19
Gene Description	minichromosome maintenance complex component 2
Omim ID	116945
Gene Ontology	Hyperlink
Gene Summary	<p>The protein encoded by this gene is one of the highly conserved mini-chromosome maintenance proteins (MCM) that are involved in the initiation of eukaryotic genome replication. The hexameric protein complex formed by MCM proteins is a key component of the pre-replication complex (pre-RC) and may be involved in the formation of replication forks and in the recruitment of other DNA replication related proteins. This protein forms a complex with MCM4, 6, and 7, and has been shown to regulate the helicase activity of the complex. This protein is phosphorylated, and thus regulated by, protein kinases CDC2 and CDC7. [provided by RefSeq]</p>
Other Designations	DNA replication licensing factor MCM2 MCM2 minichromosome maintenance deficient 2, mitotin cell division cycle-like 1 cyclin-like 1 minichromosome maintenance deficient 2 (mitotin) nuclear protein BM28

Pathway

- [Cell cycle](#)
- [DNA replication](#)

Disease

- [Genetic Predisposition to Disease](#)
- [Ovarian Neoplasms](#)