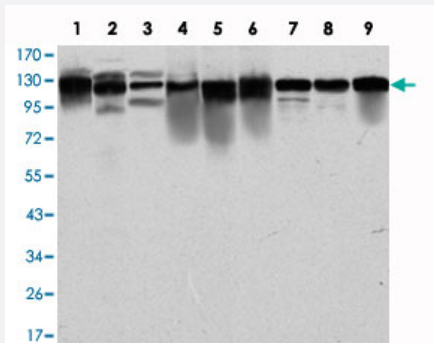


MCM2 monoclonal antibody, clone 2B3

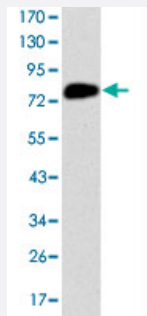
Catalog # MAB10805 Size 100 uL

Applications



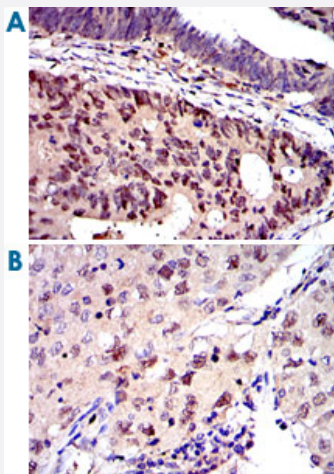
Western Blot (Cell lysate)

Western blot analysis using MCM2 monoclonal antibody, clone 2B3 (Cat # MAB10805) against PC-12 (1), Cos7 (2), NIH/3T3 (3), HepG2 (4), HEK293 (5), K-562 (6), Jurkat (7), HeLa (8) and MCF-7 (9) cell lysate.



Western Blot (Recombinant protein)

Western blot analysis using MCM2 monoclonal antibody, clone 2B3 (Cat # MAB10805) against human MCM2 (aa: 16-232) recombinant protein. (Expected MW is 50.4 kDa)

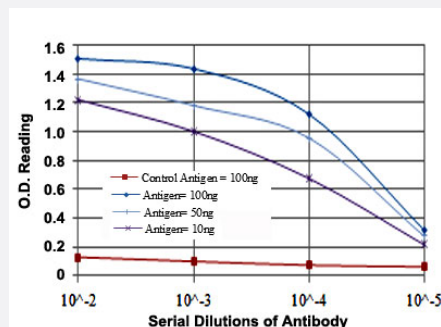


Immunohistochemistry (Formalin/PFA-fixed paraffin-embedded sections)

Immunohistochemical analysis of paraffin-embedded human colon cancer (A) and human lung cancer (B) tissues using MCM2 monoclonal antibody, clone 2B3 (Cat # MAB10805) with DAB staining.

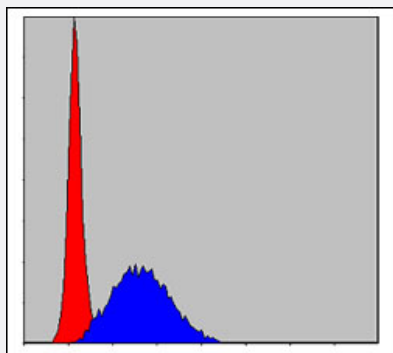
Enzyme-linked Immunoabsorbent Assay

ELISA measurement of MCM2 monoclonal antibody, clone 2B3 (Cat # MAB10805).



Flow Cytometry

Flow cytometric analysis of HeLa cells using MCM2 monoclonal antibody, clone 2B3 (Cat # MAB10805) (blue) and negative control (red).



Specification

Product Description Mouse monoclonal antibody raised against partial recombinant MCM2.

Immunogen Recombinant protein corresponding to human MCM2.

Host Mouse

Reactivity Human, Monkey, Mouse, Rat

Form Liquid

Isotype IgG1

Recommend Usage
 ELISA (1:10000)
 Western Blot (1:500-1:2000)
 Immunohistochemistry (1:200-1:1000)
 Flow cytometry (1:200-1:400)
 The optimal working dilution should be determined by the end user.

Storage Buffer In ascites (0.03% sodium azide)

Storage Instruction
 Store at 4°C. For long term storage store at -20°C.
 Aliquot to avoid repeated freezing and thawing.

Note This product contains sodium azide: a POISONOUS AND HAZARDOUS SUBSTANCE which should be handled by trained staff only.

Applications

- Western Blot (Cell lysate)

Western blot analysis using MCM2 monoclonal antibody, clone 2B3 (Cat # MAB10805) against PC-12 (1), Cos7 (2), NIH/3T3 (3), HepG2 (4), HEK293 (5), K-562 (6), Jurkat (7), HeLa (8) and MCF-7 (9) cell lysate.

- Western Blot (Recombinant protein)

Western blot analysis using MCM2 monoclonal antibody, clone 2B3 (Cat # MAB10805) against human MCM2 (aa: 16-232) recombinant protein. (Expected MW is 50.4 kDa)

- Immunohistochemistry (Formalin/PFA-fixed paraffin-embedded sections)

Immunohistochemical analysis of paraffin-embedded human colon cancer (A) and human lung cancer (B) tissues using MCM2 monoclonal antibody, clone 2B3 (Cat # MAB10805) with DAB staining.

- Enzyme-linked Immunoabsorbent Assay

ELISA measurement of MCM2 monoclonal antibody, clone 2B3 (Cat # MAB10805).

- Flow Cytometry

Flow cytometric analysis of HeLa cells using MCM2 monoclonal antibody, clone 2B3 (Cat # MAB10805) (blue) and negative control (red).

Gene Info — MCM2

Entrez GeneID [4171](#)

Gene Name MCM2

Gene Alias BM28, CCNL1, CDCL1, D3S3194, KIAA0030, MGC10606, MITOTIN, cdc19

Gene Description minichromosome maintenance complex component 2

Omim ID [116945](#)

Gene Ontology [Hyperlink](#)

Gene Summary

The protein encoded by this gene is one of the highly conserved mini-chromosome maintenance proteins (MCM) that are involved in the initiation of eukaryotic genome replication. The hexameric protein complex formed by MCM proteins is a key component of the pre-replication complex (pre-RC) and may be involved in the formation of replication forks and in the recruitment of other DNA replication related proteins. This protein forms a complex with MCM4, 6, and 7, and has been shown to regulate the helicase activity of the complex. This protein is phosphorylated, and thus regulated by, protein kinases CDC2 and CDC7. [provided by RefSeq]

Other Designations

DNA replication licensing factor MCM2|MCM2 minichromosome maintenance deficient 2, mitotin|
cell division cycle-like 1|cyclin-like 1|minichromosome maintenance deficient 2 (mitotin)|nuclear p
rotein BM28

Pathway

- [Cell cycle](#)
- [DNA replication](#)

Disease

- [Genetic Predisposition to Disease](#)
- [Ovarian Neoplasms](#)