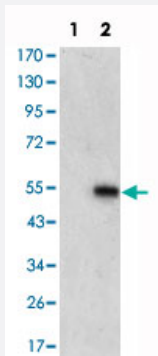


MAPK6 monoclonal antibody, clone 4E8

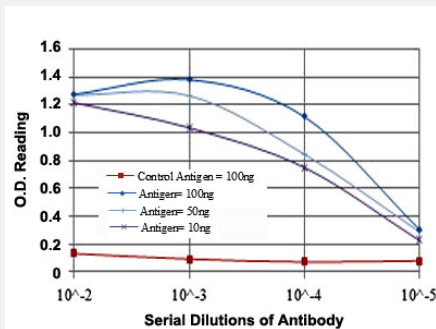
Catalog # MAB10801 Size 100 uL

Applications



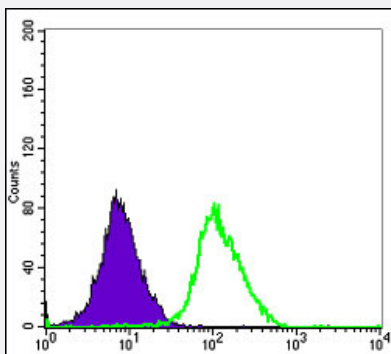
Western Blot (Transfected lysate)

Western blot analysis using MAPK6 monoclonal antibody, clone 4E8 (Cat # MAB10801) against HEK293 (1) and MAPK6-hlgFc transfected HEK293 (2) cell lysate.



Enzyme-linked Immunoabsorbent Assay

ELISA measurement of MAPK6 monoclonal antibody, clone 4E8 (Cat # MAB10801).



Flow Cytometry

Flow cytometric analysis of HeLa cells using MAPK6 monoclonal antibody, clone 4E8 (Cat # MAB10801) (green) and negative control (purple).

Specification

Product Description

Mouse monoclonal antibody raised against partial recombinant MAPK6.

Immunogen	Recombinant protein corresponding to human MAPK6.
Host	Mouse
Reactivity	Human
Form	Liquid
Isotype	IgG1
Recommend Usage	ELISA (1:10000) Western Blot (1:500-1:2000) Flow cytometry (1:200-1:400) The optimal working dilution should be determined by the end user.
Storage Buffer	In ascites (0.03% sodium azide)
Storage Instruction	Store at 4°C. For long term storage store at -20°C. Aliquot to avoid repeated freezing and thawing.
Note	This product contains sodium azide: a POISONOUS AND HAZARDOUS SUBSTANCE which should be handled by trained staff only.

Applications

- Western Blot (Transfected lysate)

Western blot analysis using MAPK6 monoclonal antibody, clone 4E8 (Cat # MAB10801) against HEK293 (1) and MAPK6-hlgGfc transfected HEK293 (2) cell lysate.

- Enzyme-linked Immunoabsorbent Assay

ELISA measurement of MAPK6 monoclonal antibody, clone 4E8 (Cat # MAB10801).

- Flow Cytometry

Flow cytometric analysis of HeLa cells using MAPK6 monoclonal antibody, clone 4E8 (Cat # MAB10801) (green) and negative control (purple).

Gene Info — MAPK6

Entrez GeneID	5597
Gene Name	MAPK6
Gene Alias	DKFZp686F03189, ERK3, HsT17250, PRKM6, p97MAPK
Gene Description	mitogen-activated protein kinase 6

Omim ID [602904](#)

Gene Ontology [Hyperlink](#)

Gene Summary The protein encoded by this gene is a member of the Ser/Thr protein kinase family, and is most closely related to mitogen-activated protein kinases (MAP kinases). MAP kinases also known as extracellular signal-regulated kinases (ERKs), are activated through protein phosphorylation cascades and act as integration points for multiple biochemical signals. This kinase is localized in the nucleus, and has been reported to be activated in fibroblasts upon treatment with serum or phorbol esters. [provided by RefSeq]

Other Designations MAP kinase isoform p97|extracellular signal-regulated kinase 3|extracellular signal-regulated kinase, p97|protein kinase, mitogen-activated 5|protein kinase, mitogen-activated 6

Pathway

- [MAPK signaling pathway](#)