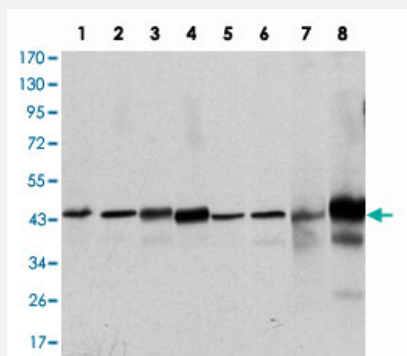


MAPK3 monoclonal antibody, clone 1E5

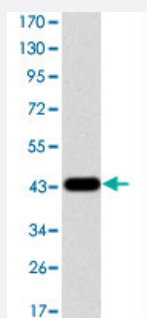
Catalog # MAB10800 Size 100 uL

Applications



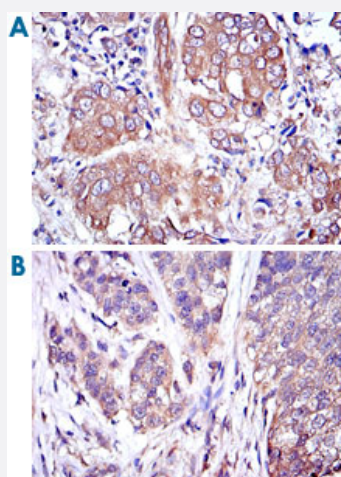
Western Blot (Cell lysate)

Western blot analysis using MAPK3 monoclonal antibody, clone 1E5 (Cat # MAB10800) against HeLa (1), Jurkat (2), RAW264.7 (3), HEK293 (4), K-562 (5), NIH/3T3 (6), Cos7 (7) and PC-12 (8) cell lysate.



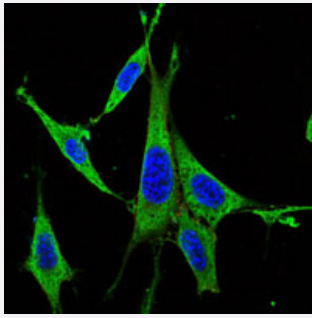
Western Blot (Recombinant protein)

Western blot analysis using MAPK3 monoclonal antibody, clone 1E5 (Cat # MAB10800) against human MAPK3 (aa: 9-143) recombinant protein. (Expected MW is 40.8 kDa)



Immunohistochemistry (Formalin/PFA-fixed paraffin-embedded sections)

Immunohistochemical analysis of paraffin-embedded human breast cancer (A) and human bladder cancer (B) tissues using MAPK3 monoclonal antibody, clone 1E5 (Cat # MAB10800) with DAB staining.

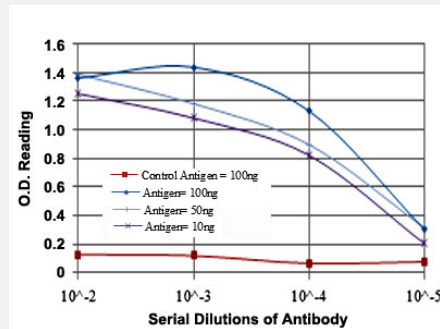


Immunofluorescence

Immunofluorescence analysis of NIH/3T3 cells using MAPK3 monoclonal antibody, clone 1E5 (Cat # MAB10800) (green). Blue: DRAQ5 fluorescent DNA dye. Red: Actin filaments have been labeled with Alexa Fluor-555 phalloidin. MAPK3 monoclonal antibody, clone 1E5 (Cat # MAB10800) (green). Blue: DRAQ5 fluorescent DNA dye. Red: Actin filaments have been labeled with Alexa Fluor-555 phalloidin.

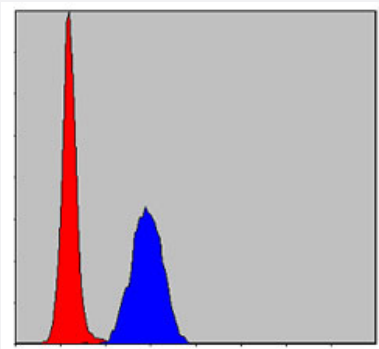
Enzyme-linked Immunoabsorbent Assay

ELISA measurement of MAPK3 monoclonal antibody, clone 1E5 (Cat # MAB10800).



Flow Cytometry

Flow cytometric analysis of HeLa cells using MAPK3 monoclonal antibody, clone 1E5 (Cat # MAB10800) (blue) and negative control (red).



Specification

Product Description	Mouse monoclonal antibody raised against partial recombinant MAPK3.
Immunogen	Recombinant protein corresponding to human MAPK3.
Host	Mouse
Reactivity	Human, Monkey, Mouse, Rat
Form	Liquid
Isotype	IgG1

Recommend Usage	ELISA (1:10000) Western Blot (1:500-1:2000) Immunohistochemistry (1:200-1:1000) Immunofluorescence (1:200-1:1000) Flow cytometry (1:200-1:400) The optimal working dilution should be determined by the end user.
Storage Buffer	In ascites (0.03% sodium azide)
Storage Instruction	Store at 4°C. For long term storage store at -20°C. Aliquot to avoid repeated freezing and thawing.
Note	This product contains sodium azide: a POISONOUS AND HAZARDOUS SUBSTANCE which should be handled by trained staff only.

Applications

- Western Blot (Cell lysate)

Western blot analysis using MAPK3 monoclonal antibody, clone 1E5 (Cat # MAB10800) against HeLa (1), Jurkat (2), RAW264.7 (3), HEK293 (4), K-562 (5), NIH/3T3 (6), Cos7 (7) and PC-12 (8) cell lysate.

- Western Blot (Recombinant protein)

Western blot analysis using MAPK3 monoclonal antibody, clone 1E5 (Cat # MAB10800) against human MAPK3 (aa: 9-143) recombinant protein. (Expected MW is 40.8 kDa)

- Immunohistochemistry (Formalin/PFA-fixed paraffin-embedded sections)

Immunohistochemical analysis of paraffin-embedded human breast cancer (A) and human bladder cancer (B) tissues using MAPK3 monoclonal antibody, clone 1E5 (Cat # MAB10800) with DAB staining.

- Immunofluorescence

Immunofluorescence analysis of NIH/3T3 cells using MAPK3 monoclonal antibody, clone 1E5 (Cat # MAB10800) (green). Blue: DRAQ5 fluorescent DNA dye. Red: Actin filaments have been labeled with Alexa Fluor-555 phalloidin. MAPK3 monoclonal antibody, clone 1E5 (Cat # MAB10800) (green). Blue: DRAQ5 fluorescent DNA dye. Red: Actin filaments have been labeled with Alexa Fluor-555 phalloidin.

- Enzyme-linked Immunoabsorbent Assay

ELISA measurement of MAPK3 monoclonal antibody, clone 1E5 (Cat # MAB10800).

- Flow Cytometry

Flow cytometric analysis of HeLa cells using MAPK3 monoclonal antibody, clone 1E5 (Cat # MAB10800) (blue) and negative control (red).

Gene Info — MAPK3

Entrez GeneID	5595
Gene Name	MAPK3
Gene Alias	ERK1, HS44KDAP, HUMKER1A, MGC20180, P44ERK1, P44MAPK, PRKM3
Gene Description	mitogen-activated protein kinase 3
Omim ID	601795
Gene Ontology	Hyperlink
Gene Summary	The protein encoded by this gene is a member of the MAP kinase family. MAP kinases, also known as extracellular signal-regulated kinases (ERKs), act in a signaling cascade that regulates various cellular processes such as proliferation, differentiation, and cell cycle progression in response to a variety of extracellular signals. This kinase is activated by upstream kinases, resulting in its translocation to the nucleus where it phosphorylates nuclear targets. Alternatively spliced transcript variants encoding different protein isoforms have been described. [provided by RefSeq]
Other Designations	OTTHUMP00000174538 OTTHUMP00000174540 extracellular signal-regulated kinase 1 extracellular signal-related kinase 1

Pathway

- [Acute myeloid leukemia](#)
- [Adherens junction](#)
- [Axon guidance](#)
- [B cell receptor signaling pathway](#)
- [Bladder cancer](#)
- [Chemokine signaling pathway](#)
- [Chronic myeloid leukemia](#)
- [Colorectal cancer](#)
- [Dorso-ventral axis formation](#)
- [Endometrial cancer](#)
- [ErbB signaling pathway](#)

- [Fc epsilon RI signaling pathway](#)
- [Fc gamma R-mediated phagocytosis](#)
- [Focal adhesion](#)
- [Gap junction](#)
- [Glioma](#)
- [GnRH signaling pathway](#)
- [Insulin signaling pathway](#)
- [Long-term depression](#)
- [Long-term potentiation](#)
- [MAPK signaling pathway](#)
- [Melanogenesis](#)
- [Melanoma](#)
- [mTOR signaling pathway](#)
- [Natural killer cell mediated cytotoxicity](#)
- [Neurotrophin signaling pathway](#)
- [Non-small cell lung cancer](#)
- [Pancreatic cancer](#)
- [Pathways in cancer](#)
- [Prion diseases](#)
- [Prostate cancer](#)
- [Regulation of actin cytoskeleton](#)
- [Renal cell carcinoma](#)
- [T cell receptor signaling pathway](#)
- [TGF-beta signaling pathway](#)
- [Thyroid cancer](#)
- [Toll-like receptor signaling pathway](#)

- [Type II diabetes mellitus](#)
- [Vascular smooth muscle contraction](#)
- [VEGF signaling pathway](#)

Disease

- [Asthma](#)
- [Autistic Disorder](#)
- [Disease Models](#)
- [Genetic Predisposition to Disease](#)