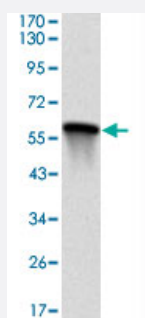


# MAP2K7 monoclonal antibody, clone 4E5

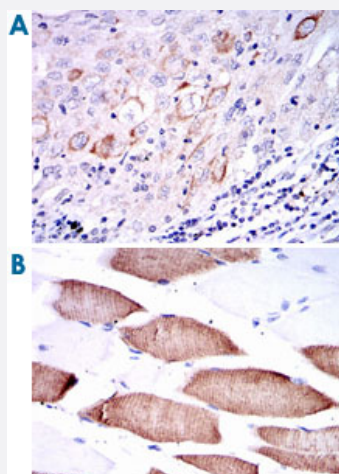
Catalog # MAB10796      Size 100 uL

## Applications



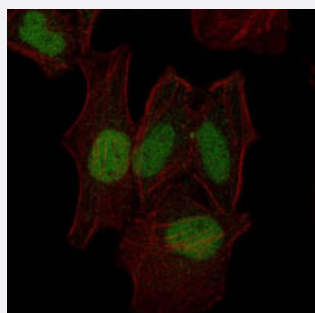
### Western Blot (Recombinant protein)

Western blot analysis using MAP2K7 monoclonal antibody, clone 4E5 (Cat # MAB10796) against human MAP2K7 (aa: 7-178) recombinant protein. (Expected MW is 45.1 kDa)



### Immunohistochemistry (Formalin/PFA-fixed paraffin-embedded sections)

Immunohistochemical analysis of paraffin-embedded human lung cancer (A) and human muscle (B) tissues using MAP2K7 monoclonal antibody, clone 4E5 (Cat # MAB10796) with DAB staining.

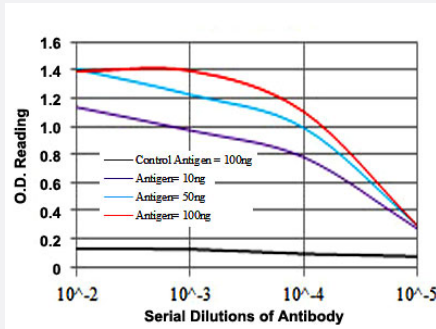


### Immunofluorescence

Immunofluorescence analysis of HeLa cells using MAP2K7 monoclonal antibody, clone 4E5 (Cat # MAB10796) (green). Red: Actin filaments have been labeled with Alexa Fluor-555 phalloidin. MAP2K7 monoclonal antibody, clone 4E5 (Cat # MAB10796) (green). Red: Actin filaments have been labeled with Alexa Fluor-555 phalloidin.

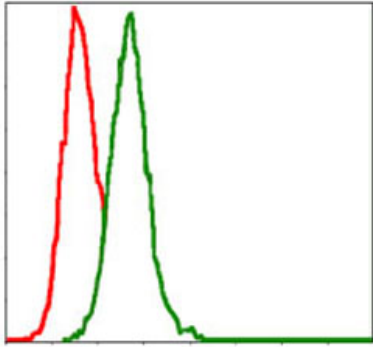
## Enzyme-linked Immunoabsorbent Assay

ELISA measurement of MAP2K7 monoclonal antibody, clone 4E5 (Cat # MAB10796).



## Flow Cytometry

Flow cytometric analysis of HeLa cells using MAP2K7 monoclonal antibody, clone 4E5 (Cat # MAB10796) (green) and negative control (red).



## Specification

<b>Product Description</b>	Mouse monoclonal antibody raised against partial recombinant MAP2K7.
<b>Immunogen</b>	Recombinant protein corresponding to human MAP2K7.
<b>Host</b>	Mouse
<b>Reactivity</b>	Human
<b>Form</b>	Liquid
<b>Isotype</b>	IgG1
<b>Recommend Usage</b>	ELISA (1:10000) Western Blot (1:500-1:2000) Immunohistochemistry (1:200-1:1000) Immunofluorescence (1:200-1:1000) Flow cytometry (1:200-1:400) The optimal working dilution should be determined by the end user.
<b>Storage Buffer</b>	In ascites (0.03% sodium azide)
<b>Storage Instruction</b>	Store at 4°C. For long term storage store at -20°C. Aliquot to avoid repeated freezing and thawing.

**Note**

This product contains sodium azide: a POISONOUS AND HAZARDOUS SUBSTANCE which should be handled by trained staff only.

## Applications

- Western Blot (Recombinant protein)

Western blot analysis using MAP2K7 monoclonal antibody, clone 4E5 (Cat # MAB10796) against human MAP2K7 (aa: 7-178) recombinant protein. (Expected MW is 45.1 kDa)

- Immunohistochemistry (Formalin/PFA-fixed paraffin-embedded sections)

Immunohistochemical analysis of paraffin-embedded human lung cancer (A) and human muscle (B) tissues using MAP2K7 monoclonal antibody, clone 4E5 (Cat # MAB10796) with DAB staining.

- Immunofluorescence

Immunofluorescence analysis of HeLa cells using MAP2K7 monoclonal antibody, clone 4E5 (Cat # MAB10796) (green). Red: Actin filaments have been labeled with Alexa Fluor-555 phalloidin. MAP2K7 monoclonal antibody, clone 4E5 (Cat # MAB10796) (green). Red: Actin filaments have been labeled with Alexa Fluor-555 phalloidin.

- Enzyme-linked Immunoabsorbent Assay

ELISA measurement of MAP2K7 monoclonal antibody, clone 4E5 (Cat # MAB10796).

- Flow Cytometry

Flow cytometric analysis of HeLa cells using MAP2K7 monoclonal antibody, clone 4E5 (Cat # MAB10796) (green) and negative control (red).

## Gene Info — MAP2K7

Entrez GeneID	<a href="#">5609</a>
Gene Name	MAP2K7
Gene Alias	Jnk2, MAPKK7, MKK7, PRKMK7
Gene Description	mitogen-activated protein kinase kinase 7
Omim ID	<a href="#">603014</a>
Gene Ontology	<a href="#">Hyperlink</a>

**Gene Summary**

The protein encoded by this gene is a dual specificity protein kinase that belongs to the MAP kinase family. This kinase specifically activates MAPK8/JNK1 and MAPK9/JNK2, and this kinase itself is phosphorylated and activated by MAP kinase kinase kinases including MAP3K1/MEKK1, MAP3K2/MEKK2, MAP3K3/MEKK5, and MAP4K2/GCK. This kinase is involved in the signal transduction mediating the cell responses to proinflammatory cytokines, and environmental stresses. Multiple alternatively spliced transcript variants encoding distinct isoforms have been found, but only one transcript variant has been supported and defined. [provided by RefSeq]

**Other Designations**

JNK kinase 2|JNK-activating kinase 2|MAP kinase kinase 7|OTTHUMP00000174397|c-Jun N-terminal kinase kinase 2|dual specificity mitogen-activated protein kinase kinase 7

**Pathway**

- [ErbB signaling pathway](#)
- [Fc epsilon RI signaling pathway](#)
- [GnRH signaling pathway](#)
- [MAPK signaling pathway](#)
- [Neurotrophin signaling pathway](#)
- [T cell receptor signaling pathway](#)
- [Toll-like receptor signaling pathway](#)