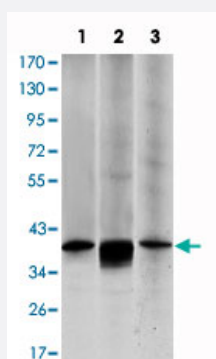


# MAP2K6 monoclonal antibody, clone 3H12B9

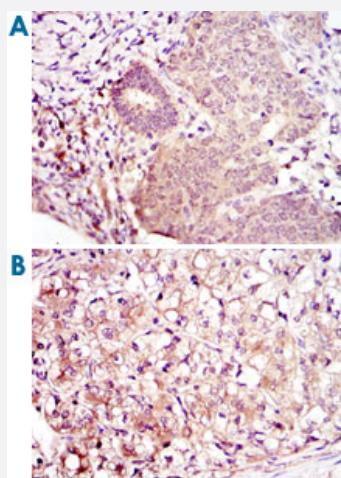
Catalog # MAB10795      Size 100 uL

## Applications



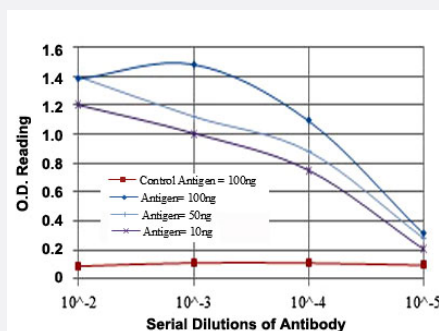
### Western Blot (Cell lysate)

Western blot analysis using MAP2K6 monoclonal antibody, clone 3H12B9 (Cat # MAB10795) against HepG2 (1), MCF-7 (2) and NIH/3T3 (3) cell lysate.



### Immunohistochemistry (Formalin/PFA-fixed paraffin-embedded sections)

Immunohistochemical analysis of paraffin-embedded human ovarian cancer (A) and kidney cancer (B) using MAP2K6 monoclonal antibody, clone 3H12B9 (Cat # MAB10795) with DAB staining.



### Enzyme-linked Immunoabsorbent Assay

ELISA measurement of MAP2K6 monoclonal antibody, clone 3H12B9 (Cat # MAB10795).

## Specification

Product Description	Mouse monoclonal antibody raised against partial recombinant MAP2K6.
Immunogen	Recombinant protein corresponding to human MAP2K6.
Host	Mouse
Reactivity	Human, Mouse
Form	Liquid
Isotype	IgG1
Recommend Usage	ELISA (1:10000) Western Blot (1:500-1:2000) Immunohistochemistry (1:200-1:1000) The optimal working dilution should be determined by the end user.
Storage Buffer	In ascites (0.03% sodium azide)
Storage Instruction	Store at 4°C. For long term storage store at -20°C. Aliquot to avoid repeated freezing and thawing.
Note	This product contains sodium azide: a POISONOUS AND HAZARDOUS SUBSTANCE which should be handled by trained staff only.

## Applications

- Western Blot (Cell lysate)

Western blot analysis using MAP2K6 monoclonal antibody, clone 3H12B9 (Cat # MAB10795) against HepG2 (1), MCF-7 (2) and NIH/3T3 (3) cell lysate.

- Immunohistochemistry (Formalin/PFA-fixed paraffin-embedded sections)

Immunohistochemical analysis of paraffin-embedded human ovarian cancer (A) and kidney cancer (B) using MAP2K6 monoclonal antibody, clone 3H12B9 (Cat # MAB10795) with DAB staining.

- Enzyme-linked Immunoabsorbent Assay

ELISA measurement of MAP2K6 monoclonal antibody, clone 3H12B9 (Cat # MAB10795).

## Gene Info — MAP2K6

Entrez GeneID	<a href="#">5608</a>
Gene Name	MAP2K6
Gene Alias	MAPKK6, MEK6, MKK6, PRKMK6, SAPKK3

Gene Description	mitogen-activated protein kinase kinase 6
Omim ID	<a href="#">601254</a>
Gene Ontology	<a href="#">Hyperlink</a>
Gene Summary	<p>This gene encodes a member of the dual specificity protein kinase family, which functions as a mitogen-activated protein (MAP) kinase kinase. MAP kinases, also known as extracellular signal-regulated kinases (ERKs), act as an integration point for multiple biochemical signals. This protein phosphorylates and activates p38 MAP kinase in response to inflammatory cytokines or environmental stress. As an essential component of p38 MAP kinase mediated signal transduction pathway, this gene is involved in many cellular processes such as stress induced cell cycle arrest, transcription activation and apoptosis. [provided by RefSeq]</p>
Other Designations	protein kinase, mitogen-activated, kinase 6 (MAP kinase kinase 6)

## Pathway

- [Amyotrophic lateral sclerosis \(ALS\)](#)
- [Fc epsilon RI signaling pathway](#)
- [GnRH signaling pathway](#)
- [MAPK signaling pathway](#)
- [Toll-like receptor signaling pathway](#)

## Disease

- [Cardiovascular Diseases](#)
- [Diabetes Mellitus](#)
- [Edema](#)
- [Huntington disease](#)