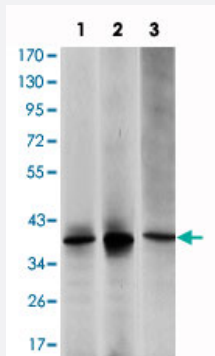


# MAP2K6 monoclonal antibody, clone 3H12C8

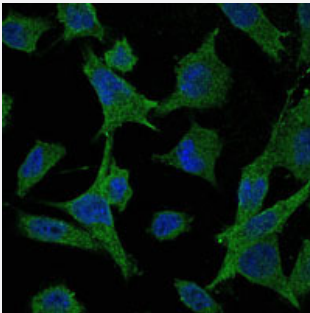
Catalog # MAB10794      Size 100 uL

## Applications



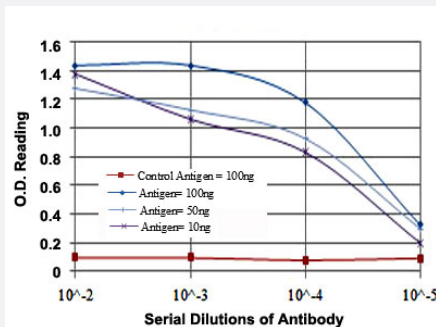
### Western Blot (Cell lysate)

Western blot analysis using MAP2K6 monoclonal antibody, clone 3H12C8 (Cat # MAB10794) against HepG2 (1), MCF-7 (2) and NIH/3T3 (3) cell lysate.



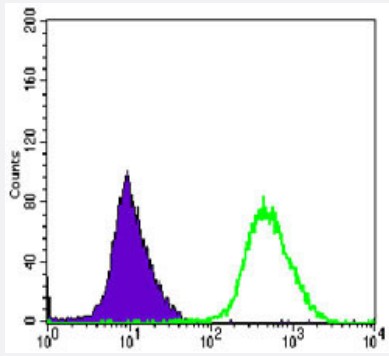
### Immunofluorescence

Immunofluorescence analysis of HeLa cells using MAP2K6 monoclonal antibody, clone 3H12C8 (Cat # MAB10794) (green). Blue: DRAQ5 fluorescent DNA dye. MAP2K6 monoclonal antibody, clone 3H12C8 (Cat # MAB10794) (green). Blue: DRAQ5 fluorescent DNA dye.



### Enzyme-linked Immunoabsorbent Assay

ELISA measurement of MAP2K6 monoclonal antibody, clone 3H12C8 (Cat # MAB10794).



## Flow Cytometry

Flow cytometric analysis of HeLa cells using MAP2K6 monoclonal antibody, clone 3H12C8 (Cat # MAB10794) (green) and negative control (purple).

## Specification

<b>Product Description</b>	Mouse monoclonal antibody raised against partial recombinant MAP2K6.
<b>Immunogen</b>	Recombinant protein corresponding to human MAP2K6.
<b>Host</b>	Mouse
<b>Reactivity</b>	Human, Mouse
<b>Form</b>	Liquid
<b>Isotype</b>	IgG1
<b>Recommend Usage</b>	ELISA (1:10000) Western Blot (1:500-1:2000) Immunofluorescence (1:200-1:1000) Flow cytometry (1:200-1:400) The optimal working dilution should be determined by the end user.
<b>Storage Buffer</b>	In ascites (0.03% sodium azide)
<b>Storage Instruction</b>	Store at 4°C. For long term storage store at -20°C. Aliquot to avoid repeated freezing and thawing.
<b>Note</b>	This product contains sodium azide: a POISONOUS AND HAZARDOUS SUBSTANCE which should be handled by trained staff only.

## Applications

- Western Blot (Cell lysate)

Western blot analysis using MAP2K6 monoclonal antibody, clone 3H12C8 (Cat # MAB10794) against HepG2 (1), MCF-7 (2) and NIH/3T3 (3) cell lysate.

- Immunofluorescence

Immunofluorescence analysis of HeLa cells using MAP2K6 monoclonal antibody, clone 3H12C8 (Cat # MAB10794) (green). Blue: DRAQ5 fluorescent DNA dye. MAP2K6 monoclonal antibody, clone 3H12C8 (Cat # MAB10794) (green). Blue: DRAQ5 fluorescent DNA dye.

- Enzyme-linked Immunoabsorbent Assay

ELISA measurement of MAP2K6 monoclonal antibody, clone 3H12C8 (Cat # MAB10794).

- Flow Cytometry

Flow cytometric analysis of HeLa cells using MAP2K6 monoclonal antibody, clone 3H12C8 (Cat # MAB10794) (green) and negative control (purple).

## Gene Info — MAP2K6

**Entrez GeneID** [5608](#)

**Gene Name** MAP2K6

**Gene Alias** MAPKK6, MEK6, MKK6, PRKMK6, SAPKK3

**Gene Description** mitogen-activated protein kinase kinase 6

**Omim ID** [601254](#)

**Gene Ontology** [Hyperlink](#)

**Gene Summary** This gene encodes a member of the dual specificity protein kinase family, which functions as a mitogen-activated protein (MAP) kinase kinase. MAP kinases, also known as extracellular signal-regulated kinases (ERKs), act as an integration point for multiple biochemical signals. This protein phosphorylates and activates p38 MAP kinase in response to inflammatory cytokines or environmental stress. As an essential component of p38 MAP kinase mediated signal transduction pathway, this gene is involved in many cellular processes such as stress induced cell cycle arrest, transcription activation and apoptosis. [provided by RefSeq]

**Other Designations** protein kinase, mitogen-activated, kinase 6 (MAP kinase kinase 6)

## Pathway

- [Amyotrophic lateral sclerosis \(ALS\)](#)
- [Fc epsilon RI signaling pathway](#)
- [GnRH signaling pathway](#)

- [MAPK signaling pathway](#)
- [Toll-like receptor signaling pathway](#)

## Disease

- [Cardiovascular Diseases](#)
- [Diabetes Mellitus](#)
- [Edema](#)
- [Huntington disease](#)