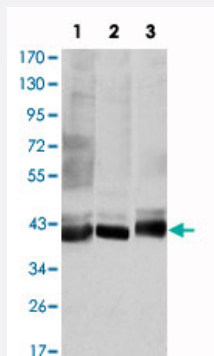


MAP2K4 monoclonal antibody, clone 5H4

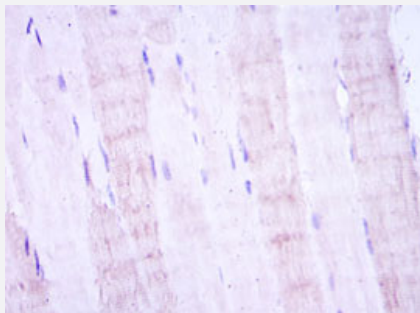
Catalog # MAB10793 Size 100 uL

Applications



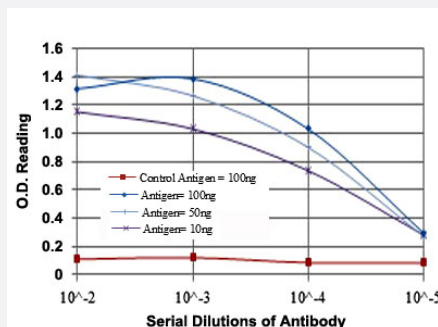
Western Blot (Cell lysate)

Western blot analysis using MAP2K4 monoclonal antibody, clone 5H4 (Cat # MAB10793) against HepG2 (1), K-562 (2), and HEK293 (3) cell lysate.



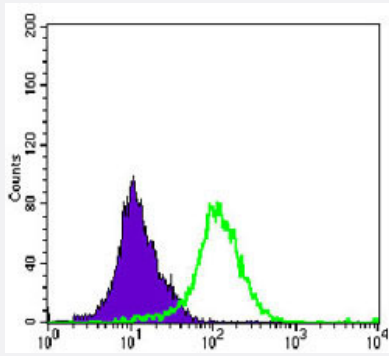
Immunohistochemistry (Formalin/PFA-fixed paraffin-embedded sections)

Immunohistochemical analysis of paraffin-embedded human muscle tissues using MAP2K4 monoclonal antibody, clone 5H4 (Cat # MAB10793) with DAB staining.



Enzyme-linked Immunoabsorbent Assay

ELISA measurement of MAP2K4 monoclonal antibody, clone 5H4 (Cat # MAB10793).



Flow Cytometry

Flow cytometric analysis of K-562 cells using MAP2K4 monoclonal antibody, clone 5H4 (Cat # MAB10793) (green) and negative control (purple).

Specification

Product Description	Mouse monoclonal antibody raised against partial recombinant MAP2K4.
Immunogen	Recombinant protein corresponding to human MAP2K4.
Host	Mouse
Reactivity	Human
Form	Liquid
Isotype	IgG1
Recommend Usage	ELISA (1:10000) Western Blot (1:500-1:2000) Immunohistochemistry (1:200-1:1000) Flow cytometry (1:200-1:400) The optimal working dilution should be determined by the end user.
Storage Buffer	In ascites (0.03% sodium azide)
Storage Instruction	Store at 4°C. For long term storage store at -20°C. Aliquot to avoid repeated freezing and thawing.
Note	This product contains sodium azide: a POISONOUS AND HAZARDOUS SUBSTANCE which should be handled by trained staff only.

Applications

- Western Blot (Cell lysate)

Western blot analysis using MAP2K4 monoclonal antibody, clone 5H4 (Cat # MAB10793) against HepG2 (1), K-562 (2), and HEK293 (3) cell lysate.

- Immunohistochemistry (Formalin/PFA-fixed paraffin-embedded sections)

Immunohistochemical analysis of paraffin-embedded human muscle tissues using MAP2K4 monoclonal antibody, clone 5H4 (Cat # MAB10793) with DAB staining.

- Enzyme-linked Immunoabsorbent Assay

ELISA measurement of MAP2K4 monoclonal antibody, clone 5H4 (Cat # MAB10793).

- Flow Cytometry

Flow cytometric analysis of K-562 cells using MAP2K4 monoclonal antibody, clone 5H4 (Cat # MAB10793) (green) and negative control (purple).

Gene Info — MAP2K4

Entrez GeneID [6416](#)

Gene Name MAP2K4

Gene Alias JNKK, JNKK1, MAPKK4, MEK4, MKK4, PRKMK4, SEK1, SERK1

Gene Description mitogen-activated protein kinase kinase 4

Omim ID [601335](#)

Gene Ontology [Hyperlink](#)

Gene Summary This gene encodes a dual specificity protein kinase that belongs to the Ser/Thr protein kinase family. This kinase is a direct activator of MAP kinases in response to various environmental stresses or mitogenic stimuli. It has been shown to activate MAPK8/JNK1, MAPK9/JNK2, and MAPK14/p38, but not MAPK1/ERK2 or MAPK3/ERK3. This kinase is phosphorylated, and thus activated by MAP3K1/MEKK. The knockout studies in mice suggested the roles of this kinase in mediating survival signal in T cell development, as well as in the organogenesis of liver. [provided by RefSeq]

Other Designations JNK activating kinase 1|JNK-activated kinase 1|MAP kinase kinase 4|MAPK/ERK kinase 4|SAPK/ERK kinase 1|c-Jun N-terminal kinase kinase 1|dual specificity mitogen-activated protein kinase kinase 4

Pathway

- [Epithelial cell signaling in Helicobacter pylori infection](#)
- [ErbB signaling pathway](#)
- [Fc epsilon RI signaling pathway](#)

- [GnRH signaling pathway](#)
- [MAPK signaling pathway](#)
- [Toll-like receptor signaling pathway](#)

Disease

- [Colorectal Neoplasms](#)
- [Genetic Predisposition to Disease](#)
- [Lung Neoplasms](#)
- [Pancreatic cancer](#)
- [Pancreatic Neoplasms](#)