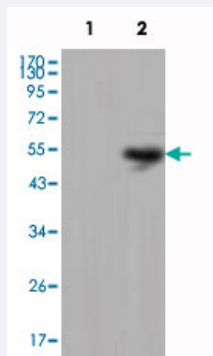


# LCN1 monoclonal antibody, clone 10B10

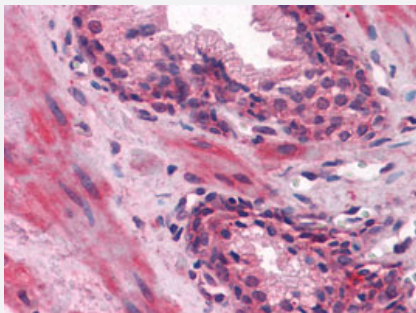
Catalog # MAB10788      Size 100 uL

## Applications



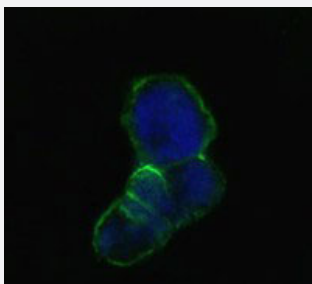
### Western Blot (Transfected lysate)

Western blot analysis using LCN1 monoclonal antibody, clone 10B10 (Cat # MAB10788) against HEK293 (1) and LCN1-hlgGfC transfected HEK293 cell lysate (2).



### Immunohistochemistry (Formalin/PFA-fixed paraffin-embedded sections)

Immunohistochemical analysis of paraffin-embedded human prostate tissues using LCN1 monoclonal antibody, clone 10B10 (Cat # MAB10788).



### Immunofluorescence

Confocal immunofluorescence analysis of methanol-fixed HEK293 cells transfected with LCN1-hlgGfC using LCN1 monoclonal antibody, clone 10B10 (Cat # MAB10788) (green), showing membrane localization. Blue: DRAQ5 fluorescent DNA dye. LCN1 monoclonal antibody, clone 10B10 (Cat # MAB10788) (green), showing membrane localization. Blue: DRAQ5 fluorescent DNA dye.

## Specification

### Product Description

Mouse monoclonal antibody raised against partial recombinant LCN1.

<b>Immunogen</b>	Recombinant protein corresponding to human LCN1.
<b>Host</b>	Mouse
<b>Reactivity</b>	Human
<b>Form</b>	Liquid
<b>Isotype</b>	IgG1
<b>Recommend Usage</b>	ELISA (1:10000) Western Blot (1:500-1:2000) Immunohistochemistry (1:200-1:1000) Immunofluorescence (1:200-1:1000) The optimal working dilution should be determined by the end user.
<b>Storage Buffer</b>	In ascites (0.03% sodium azide)
<b>Storage Instruction</b>	Store at 4°C. For long term storage store at -20°C. Aliquot to avoid repeated freezing and thawing.
<b>Note</b>	This product contains sodium azide: a POISONOUS AND HAZARDOUS SUBSTANCE which should be handled by trained staff only.

## Applications

- Western Blot (Transfected lysate)

Western blot analysis using LCN1 monoclonal antibody, clone 10B10 (Cat # MAB10788) against HEK293 (1) and LCN1-hlgGfc transfected HEK293 cell lysate (2).

- Immunohistochemistry (Formalin/PFA-fixed paraffin-embedded sections)

Immunohistochemical analysis of paraffin-embedded human prostate tissues using LCN1 monoclonal antibody, clone 10B10 (Cat # MAB10788).

- Immunofluorescence

Confocal immunofluorescence analysis of methanol-fixed HEK293 cells transfected with LCN1-hlgGfc using LCN1 monoclonal antibody, clone 10B10 (Cat # MAB10788) (green), showing membrane localization. Blue: DRAQ5 fluorescent DNA dye. LCN1 monoclonal antibody, clone 10B10 (Cat # MAB10788) (green), showing membrane localization. Blue: DRAQ5 fluorescent DNA dye.

- Enzyme-linked Immunoabsorbent Assay

## Gene Info — LCN1

Entrez GeneID	<a href="#">3933</a>
Gene Name	LCN1
Gene Alias	MGC71975, PMFA, TP, VEGP
Gene Description	lipocalin 1 (tear prealbumin)
Omim ID	<a href="#">151675</a>
Gene Ontology	<a href="#">Hyperlink</a>
Gene Summary	The protein encoded by this gene belongs to the lipocalin family. Lipocalins are a group of extracellular proteins that are able to bind lipophiles by enclosure within their structures to minimize solvent contact. This protein may bind hydrophobic ligands and inhibit cysteine proteinases. It may also play a role in taste reception. [provided by RefSeq]
Other Designations	OTTHUMP00000022539 OTTHUMP00000022540 Von Ebner gland protein lipocalin 1 lipocalin 1 (protein migrating faster than albumin, tear prealbumin) lipocalin 1-like 2 tear lipocalin

## Disease

- [Alzheimer disease](#)
- [Cardiovascular Diseases](#)
- [Diabetes Complications](#)
- [Metabolic Syndrome X](#)
- [Neoplasms](#)
- [Osteoporosis](#)