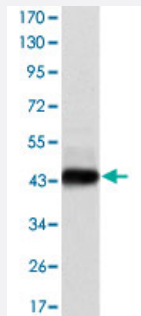


E7 monoclonal antibody, clone 6F3

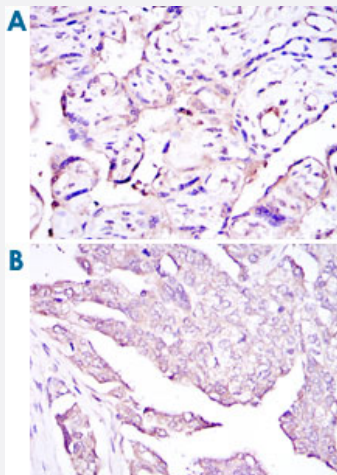
Catalog # MAB10785 Size 100 uL

Applications



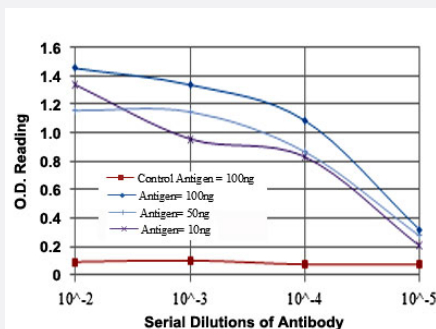
Western Blot (Recombinant protein)

Western blot analysis using E7 monoclonal antibody, clone 6F3 (Cat # MAB10785) against recombinant protein.



Immunohistochemistry (Formalin/PFA-fixed paraffin-embedded sections)

Immunohistochemical analysis of paraffin-embedded human placenta tissues (A) and ovarian cancer (B) using E7 monoclonal antibody, clone 6F3 (Cat # MAB10785) with DAB staining.



Enzyme-linked Immunoabsorbent Assay

ELISA measurement of E7 monoclonal antibody, clone 6F3 (Cat # MAB10785).

Specification

Product Description	Mouse monoclonal antibody raised against partial recombinant E7.
Immunogen	Recombinant protein corresponding to E7 transforming protein (human papillomavirus type 16).
Host	Mouse
Reactivity	Human
Form	Liquid
Isotype	IgG1
Recommend Usage	ELISA (1:10000) Western Blot (1:500-1:2000) Immunohistochemistry (1:200-1:1000) The optimal working dilution should be determined by the end user.
Storage Buffer	In ascites (0.03% sodium azide)
Storage Instruction	Store at 4°C. For long term storage store at -20°C. Aliquot to avoid repeated freezing and thawing.
Note	This product contains sodium azide: a POISONOUS AND HAZARDOUS SUBSTANCE which should be handled by trained staff only.

Applications

- Western Blot (Recombinant protein)

Western blot analysis using E7 monoclonal antibody, clone 6F3 (Cat # MAB10785) against recombinant protein.

- Immunohistochemistry (Formalin/PFA-fixed paraffin-embedded sections)

Immunohistochemical analysis of paraffin-embedded human placenta tissues (A) and ovarian cancer (B) using E7 monoclonal antibody, clone 6F3 (Cat # MAB10785) with DAB staining.

- Enzyme-linked Immunoabsorbent Assay

ELISA measurement of E7 monoclonal antibody, clone 6F3 (Cat # MAB10785).

Gene Info — E7

Entrez GeneID [1489079](#)

Gene Name E7

Gene Alias	-
Gene Description	transforming protein
Gene Ontology	Hyperlink
Other Designations	-