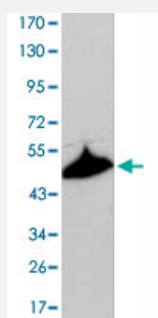


KRT15 monoclonal antibody, clone 6E7

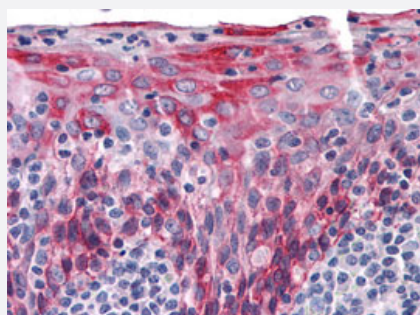
Catalog # MAB10723 Size 100 uL

Applications



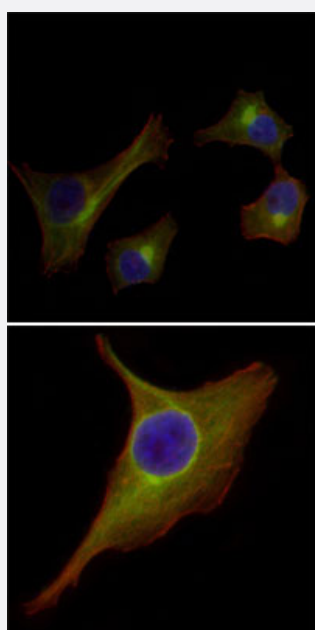
Western Blot (Cell lysate)

Western blot analysis using KRT15 monoclonal antibody, clone 6E7 (Cat # MAB10723) against A-431 cell lysate.



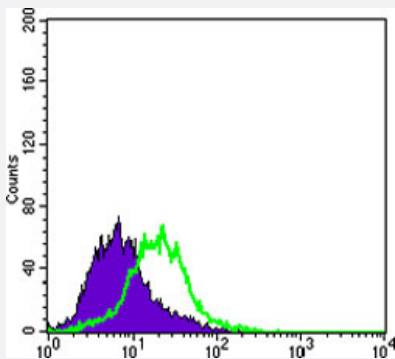
Immunohistochemistry (Formalin/PFA-fixed paraffin-embedded sections)

Immunohistochemical analysis of paraffin-embedded human tonsil tissues using KRT15 monoclonal antibody, clone 6E7 (Cat # MAB10723) .



Immunofluorescence

Immunofluorescence analysis of HepG2 (upper) and PACN-1 (bottom) cells using KRT15 monoclonal antibody, clone 6E7 (Cat # MAB10723) (green) . Red: Actin filaments have been labeled with DY-554 phalloidin. Blue: DRAQ5 fluorescent DNA dye.



Flow Cytometry

Flow cytometric analysis of PACN-1 cells using KRT15 monoclonal antibody, clone 6E7 (Cat # MAB10723) (green) and negative control (purple).

Specification

Product Description	Mouse monoclonal antibody raised against partial recombinant KRT15.
Immunogen	Recombinant protein corresponding to human KRT15.
Host	Mouse
Theoretical MW (kDa)	49
Reactivity	Human
Form	Liquid
Isotype	IgG2a
Recommend Usage	ELISA (1:10000) Western Blot (1:500-1:2000) Immunohistochemistry (1:200-1:1000) Immunofluorescence (1:200-1:1000) Flow cytometry (1:200-1:400) The optimal working dilution should be determined by the end user.
Storage Buffer	In ascites (0.03% sodium azide)
Storage Instruction	Store at 4°C. For long term storage store at -20°C. Aliquot to avoid repeated freezing and thawing.
Note	This product contains sodium azide: a POISONOUS AND HAZARDOUS SUBSTANCE which should be handled by trained staff only.

Applications

- Western Blot (Cell lysate)

Western blot analysis using KRT15 monoclonal antibody, clone 6E7 (Cat # MAB10723) against A-431 cell lysate.

- Immunohistochemistry (Formalin/PFA-fixed paraffin-embedded sections)

Immunohistochemical analysis of paraffin-embedded human tonsil tissues using KRT15 monoclonal antibody, clone 6E7 (Cat # MAB10723) .

- Immunofluorescence

Immunofluorescence analysis of HepG2 (upper) and PACN-1 (bottom) cells using KRT15 monoclonal antibody, clone 6E7 (Cat # MAB10723) (green) . Red: Actin filaments have been labeled with DY-554 phalloidin. Blue: DRAQ5 fluorescent DNA dye.

- Enzyme-linked Immunoabsorbent Assay

- Flow Cytometry

Flow cytometric analysis of PACN-1 cells using KRT15 monoclonal antibody, clone 6E7 (Cat # MAB10723) (green) and negative control (purple).

Gene Info — KRT15

Entrez GeneID [3866](#)

Gene Name KRT15

Gene Alias CK15, K15, K1CO

Gene Description keratin 15

Omim ID [148030](#)

Gene Ontology [Hyperlink](#)

Gene Summary The protein encoded by this gene is a member of the keratin gene family. The keratins are intermediate filament proteins responsible for the structural integrity of epithelial cells and are subdivided into cytokeratins and hair keratins. Most of the type I cytokeratins consist of acidic proteins which are arranged in pairs of heterotypic keratin chains and are clustered in a region on chromosome 17q21.2. [provided by RefSeq]

Other Designations OTTHUMP00000165060|cytokeratin 15|keratin-15, basic|keratin-15, beta|type I cytoskeletal 15

Publication Reference

- [Regional Control of Hairless versus Hair-Bearing Skin by Dkk2.](#)

Song Y, Boncompagni AC, Kim SS, Gochnauer HR, Zhang Y, Loots GG, Wu D, Li Y, Xu M, Millar SE.

Cell Reports 2018 Dec; 25(11):2981.

Application: IHC-P, Mouse, Mouse hind paws