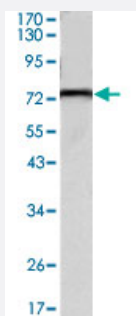


KLHL22 monoclonal antibody, clone 7B10

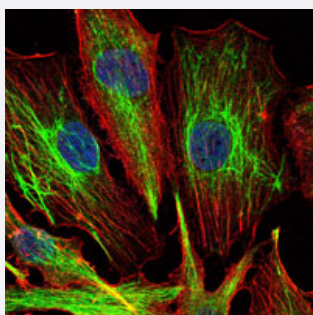
Catalog # MAB10722 Size 100 uL

Applications



Western Blot (Tissue lysate)

Western blot analysis using KLHL22 monoclonal antibody, clone 7B10 (Cat # MAB10722) against mouse brain tissues lysate.



Immunofluorescence

Immunofluorescence analysis of U251 cells using KLHL22 monoclonal antibody, clone 7B10 (Cat # MAB10722) (green) . Blue: DRAQ5 fluorescent DNA dye. Red: Actin filaments have been labeled with Alexa Fluor-555 phalloidin.

Specification

Product Description	Mouse monoclonal antibody raised against partial recombinant KLHL22.
Immunogen	Recombinant protein corresponding to human KLHL22.
Host	Mouse
Theoretical MW (kDa)	72
Reactivity	Human
Form	Liquid
Isotype	IgG1

Recommend Usage	ELISA (1:10000) Western Blot (1:500-1:2000) Immunofluorescence (1:200-1:1000) The optimal working dilution should be determined by the end user.
Storage Buffer	In ascites (0.03% sodium azide)
Storage Instruction	Store at 4°C. For long term storage store at -20°C. Aliquot to avoid repeated freezing and thawing.
Note	This product contains sodium azide: a POISONOUS AND HAZARDOUS SUBSTANCE which should be handled by trained staff only.

Applications

- Western Blot (Tissue lysate)

Western blot analysis using KLHL22 monoclonal antibody, clone 7B10 (Cat # MAB10722) against mouse brain tissues lysate.

- Immunofluorescence

Immunofluorescence analysis of U251 cells using KLHL22 monoclonal antibody, clone 7B10 (Cat # MAB10722) (green) . Blue: DRAQ5 fluorescent DNA dye. Red: Actin filaments have been labeled with Alexa Fluor-555 phalloidin.

- Enzyme-linked Immunoabsorbent Assay

Gene Info — KLHL22

Entrez GeneID	84861
Gene Name	KLHL22
Gene Alias	KELCHL
Gene Description	kelch-like 22 (Drosophila)
Gene Ontology	Hyperlink
Other Designations	kelch-like

Disease

- [Kidney Failure](#)