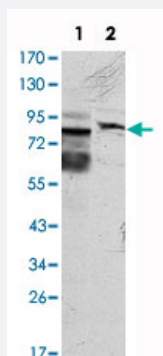


KLHL11 monoclonal antibody, clone 1B9C1

Catalog # MAB10718

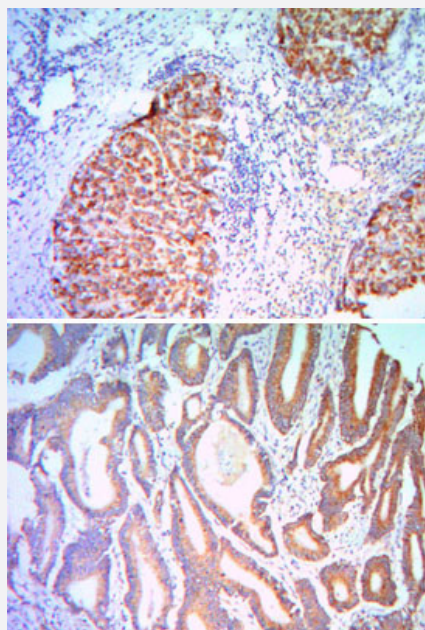
Size 100 uL

Applications



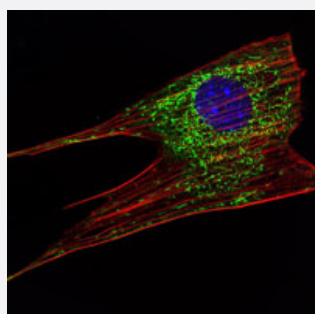
Western Blot (Cell lysate)

Western blot analysis using KLHL11 monoclonal antibody, clone 1B9C1 (Cat # MAB10718) against HeLa (1) and MCF-7 (2) cell lysate.



Immunohistochemistry (Formalin/PFA-fixed paraffin-embedded sections)

Immunohistochemical analysis of paraffin-embedded human liver cancer (bottom) and colon cancer tissues (upper) using KLHL11 monoclonal antibody, clone 1B9C1 (Cat # MAB10718) with DAB staining.



Immunofluorescence

Immunofluorescence analysis of NIH/3T3 cells using KLHL11 monoclonal antibody, clone 1B9C1 (Cat # MAB10718) (green) . Blue: DRAQ5 fluorescent DNA dye. Red: Actin filaments have been labeled with Alexa Fluor-555 phalloidin.

Specification

Product Description	Mouse monoclonal antibody raised against partial recombinant KLHL11.
Immunogen	Recombinant protein corresponding to human KLHL11.
Host	Mouse
Theoretical MW (kDa)	80
Reactivity	Human
Form	Liquid
Isotype	IgG1
Recommend Usage	ELISA (1:10000) Western Blot (1:500-1:2000) Immunohistochemistry (1:200-1:1000) Immunofluorescence (1:200-1:1000) The optimal working dilution should be determined by the end user.
Storage Buffer	In ascites (0.03% sodium azide)
Storage Instruction	Store at 4°C. For long term storage store at -20°C. Aliquot to avoid repeated freezing and thawing.
Note	This product contains sodium azide: a POISONOUS AND HAZARDOUS SUBSTANCE which should be handled by trained staff only.

Applications

- Western Blot (Cell lysate)

Western blot analysis using KLHL11 monoclonal antibody, clone 1B9C1 (Cat # MAB10718) against HeLa (1) and MCF-7 (2) cell lysate.

- Immunohistochemistry (Formalin/PFA-fixed paraffin-embedded sections)

Immunohistochemical analysis of paraffin-embedded human liver cancer (bottom) and colon cancer tissues (upper) using KLHL11 monoclonal antibody, clone 1B9C1 (Cat # MAB10718) with DAB staining.

- Immunofluorescence

Immunofluorescence analysis of NIH/3T3 cells using KLHL11 monoclonal antibody, clone 1B9C1 (Cat # MAB10718) (green) . Blue: DRAQ5 fluorescent DNA dye. Red: Actin filaments have been labeled with Alexa Fluor-555 phalloidin.

- Enzyme-linked Immunoabsorbent Assay

Gene Info — KLHL11

Entrez GeneID	55175
---------------	-----------------------

Gene Name	KLHL11
-----------	--------

Gene Alias	FLJ10572
------------	----------

Gene Description	kelch-like 11 (Drosophila)
------------------	----------------------------

Gene Ontology	Hyperlink
---------------	---------------------------

Other Designations	kelch-like 11
--------------------	---------------