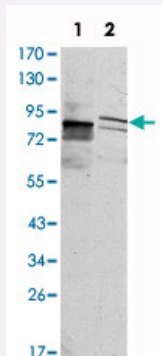


# KLHL11 monoclonal antibody, clone 1B9A8

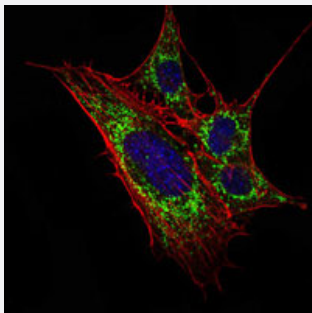
Catalog # MAB10717      Size 100 uL

## Applications



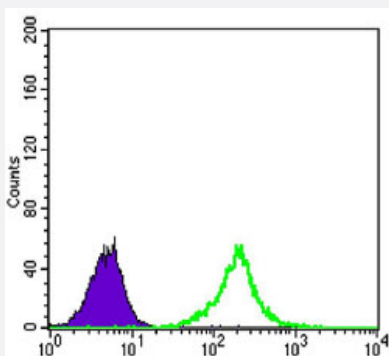
### Western Blot (Cell lysate)

Western blot analysis using KLHL11 monoclonal antibody, clone 1B9A8 (Cat # MAB10717) against HeLa (1) and MCF-7 (2) cell lysate.



### Immunofluorescence

Immunofluorescence analysis of 3T3-L1 cells using KLHL11 monoclonal antibody, clone 1B9A8 (Cat # MAB10717) (green) . Blue: DRAQ5 fluorescent DNA dye. Red: Actin filaments have been labeled with Alexa Fluor-555 phalloidin.



### Flow Cytometry

Flow cytometric analysis of K-562 cells using KLHL11 monoclonal antibody, clone 1B9A8 (Cat # MAB10717) (green) and negative control (purple).

## Specification

### Product Description

Mouse monoclonal antibody raised against partial recombinant KLHL11.

<b>Immunogen</b>	Recombinant protein corresponding to human KLHL11.
<b>Host</b>	Mouse
<b>Theoretical MW (kDa)</b>	80
<b>Reactivity</b>	Human
<b>Form</b>	Liquid
<b>Isotype</b>	IgG1
<b>Recommend Usage</b>	ELISA (1:10000) Western Blot (1:500-1:2000) Immunofluorescence (1:200-1:1000) Flow cytometry (1:200-1:400) The optimal working dilution should be determined by the end user.
<b>Storage Buffer</b>	In ascites (0.03% sodium azide)
<b>Storage Instruction</b>	Store at 4°C. For long term storage store at -20°C. Aliquot to avoid repeated freezing and thawing.
<b>Note</b>	This product contains sodium azide: a POISONOUS AND HAZARDOUS SUBSTANCE which should be handled by trained staff only.

## Applications

- Western Blot (Cell lysate)

Western blot analysis using KLHL11 monoclonal antibody, clone 1B9A8 (Cat # MAB10717) against HeLa (1) and MCF-7 (2) cell lysate.

- Immunofluorescence

Immunofluorescence analysis of 3T3-L1 cells using KLHL11 monoclonal antibody, clone 1B9A8 (Cat # MAB10717) (green) . Blue: DRAQ5 fluorescent DNA dye. Red: Actin filaments have been labeled with Alexa Fluor-555 phalloidin.

- Enzyme-linked Immunoabsorbent Assay

- Flow Cytometry

Flow cytometric analysis of K-562 cells using KLHL11 monoclonal antibody, clone 1B9A8 (Cat # MAB10717) (green) and negative control (purple).

## Gene Info — KLHL11

Entrez GeneID	<a href="#">55175</a>
Gene Name	KLHL11
Gene Alias	FLJ10572
Gene Description	kelch-like 11 (Drosophila)
Gene Ontology	<a href="#">Hyperlink</a>
Other Designations	kelch-like 11