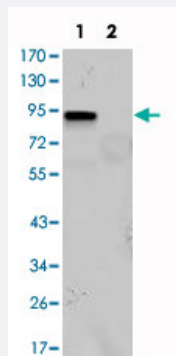


# KLF4 monoclonal antibody, clone 1E5

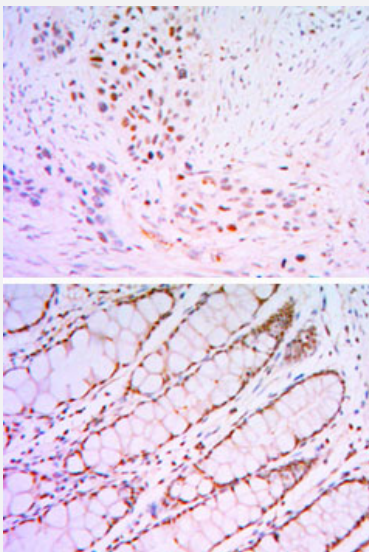
Catalog # MAB10715      Size 100 uL

## Applications



### Western Blot (Transfected lysate)

Western blot analysis using KLF4 monoclonal antibody, clone 1E5 (Cat # MAB10715) against KLF4 (aa 2-470) -hlgGFc transfected HEK293 (1) and HEK293 (2) cell lysate.



### Immunohistochemistry (Formalin/PFA-fixed paraffin-embedded sections)

Immunohistochemical analysis of paraffin-embedded human lung cancer tissues (upper) and human rectum tissues (bottom) using KLF4 monoclonal antibody, clone 1E5 (Cat # MAB10715) with DAB staining.

## Specification

<b>Product Description</b>	Mouse monoclonal antibody raised against partial recombinant KLF4.
<b>Immunogen</b>	Recombinant protein corresponding to human KLF4.
<b>Host</b>	Mouse

Theoretical MW (kDa)	55
Reactivity	Human
Form	Liquid
Isotype	IgG1
Recommend Usage	ELISA (1:10000) Western Blot (1:500-1:2000) Immunohistochemistry (1:200-1:1000) The optimal working dilution should be determined by the end user.
Storage Buffer	In ascites (0.03% sodium azide)
Storage Instruction	Store at 4°C. For long term storage store at -20°C. Aliquot to avoid repeated freezing and thawing.
Note	This product contains sodium azide: a POISONOUS AND HAZARDOUS SUBSTANCE which should be handled by trained staff only.

## Applications

- Western Blot (Transfected lysate)

Western blot analysis using KLF4 monoclonal antibody, clone 1E5 (Cat # MAB10715) against KLF4 (aa 2-470) -hlgGFc transfected HEK293 (1) and HEK293 (2) cell lysate.

- Immunohistochemistry (Formalin/PFA-fixed paraffin-embedded sections)

Immunohistochemical analysis of paraffin-embedded human lung cancer tissues (upper) and human rectum tissues (bottom) using KLF4 monoclonal antibody, clone 1E5 (Cat # MAB10715) with DAB staining.

- Enzyme-linked Immunoabsorbent Assay

## Gene Info — KLF4

Entrez GeneID	<a href="#">9314</a>
Gene Name	KLF4
Gene Alias	EZF, GKLF
Gene Description	Kruppel-like factor 4 (gut)
Omim ID	<a href="#">602253</a>

Gene Ontology

[Hyperlink](#)

Other Designations

OTTHUMP00000021862|endothelial Kruppel-like zinc finger protein

## Disease

- [Diabetes Mellitus](#)
- [Genetic Predisposition to Disease](#)