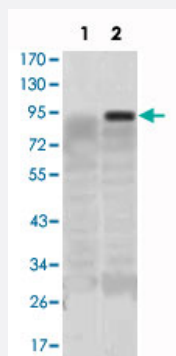


# KLF4 monoclonal antibody, clone 1E6

Catalog # MAB10714

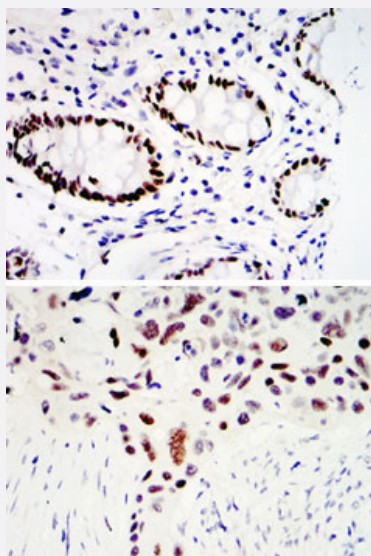
Size 100 uL

## Applications



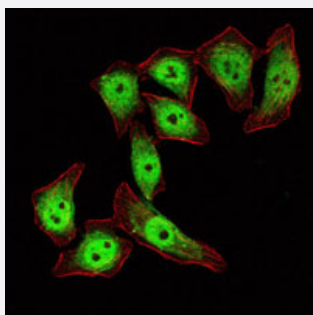
### Western Blot (Transfected lysate)

Western blot analysis using KLF4 monoclonal antibody, clone 1E6 (Cat # MAB10714) against HEK293 (1) and KLF4-hlgGfc transfected HEK293 (2) cell lysate.



### Immunohistochemistry (Formalin/PFA-fixed paraffin-embedded sections)

Immunohistochemical analysis of paraffin-embedded human colon cancer tissues (upper) and lung cancer tissues (bottom) using KLF4 monoclonal antibody, clone 1E6 (Cat # MAB10714) with DAB staining.



### Immunofluorescence

Immunofluorescence analysis of Eca-109 cells using KLF4 monoclonal antibody, clone 1E6 (Cat # MAB10714) (green) . Red: Actin filaments have been labeled with Alexa Fluor-555 phalloidin.

## Specification

<b>Product Description</b>	Mouse monoclonal antibody raised against partial recombinant KLF4.
<b>Immunogen</b>	Recombinant protein corresponding to human KLF4.
<b>Host</b>	Mouse
<b>Theoretical MW (kDa)</b>	54
<b>Reactivity</b>	Human
<b>Form</b>	Liquid
<b>Isotype</b>	IgG1
<b>Recommend Usage</b>	ELISA (1:10000) Western Blot (1:500-1:2000) Immunohistochemistry (1:200-1:1000) Immunofluorescence (1:200-1:1000) The optimal working dilution should be determined by the end user.
<b>Storage Buffer</b>	In ascites (0.03% sodium azide)
<b>Storage Instruction</b>	Store at 4°C. For long term storage store at -20°C. Aliquot to avoid repeated freezing and thawing.
<b>Note</b>	This product contains sodium azide: a POISONOUS AND HAZARDOUS SUBSTANCE which should be handled by trained staff only.

## Applications

- Western Blot (Transfected lysate)

Western blot analysis using KLF4 monoclonal antibody, clone 1E6 (Cat # MAB10714) against HEK293 (1) and KLF4-hlgFc transfected HEK293 (2) cell lysate.

- Immunohistochemistry (Formalin/PFA-fixed paraffin-embedded sections)

Immunohistochemical analysis of paraffin-embedded human colon cancer tissues (upper) and lung cancer tissues (bottom) using KLF4 monoclonal antibody, clone 1E6 (Cat # MAB10714) with DAB staining.

- Immunofluorescence

Immunofluorescence analysis of Eca-109 cells using KLF4 monoclonal antibody, clone 1E6 (Cat # MAB10714) (green) . Red: Actin filaments have been labeled with Alexa Fluor-555 phalloidin.

- Enzyme-linked Immunoabsorbent Assay

## Gene Info — KLF4

Entrez GeneID	<a href="#">9314</a>
Gene Name	KLF4
Gene Alias	EZF, GKLF
Gene Description	Kruppel-like factor 4 (gut)
Omim ID	<a href="#">602253</a>
Gene Ontology	<a href="#">Hyperlink</a>
Other Designations	OTTHUMP00000021862 endothelial Kruppel-like zinc finger protein

## Disease

- [Diabetes Mellitus](#)
- [Genetic Predisposition to Disease](#)