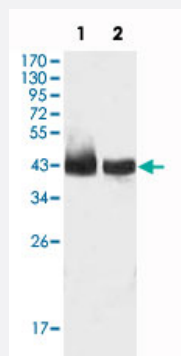


# KLF15 monoclonal antibody, clone 2G8

Catalog # MAB10713      Size 100 uL

## Applications



### Western Blot (Cell lysate)

Western blot analysis using KLF15 monoclonal antibody, clone 2G8 (Cat # MAB10713) against HepG2 (1) and SMMC-7721 (2) cell lysate.

## Specification

**Product Description** Mouse monoclonal antibody raised against partial recombinant KLF15.

**Immunogen** Recombinant protein corresponding to human KLF15.

**Host** Mouse

**Theoretical MW (kDa)** 44

**Reactivity** Human

**Form** Liquid

**Isotype** IgG1

**Recommend Usage** ELISA (1:10000)  
Western Blot (1:500-1:2000)  
The optimal working dilution should be determined by the end user.

**Storage Buffer** In ascites (0.03% sodium azide)

**Storage Instruction** Store at 4°C. For long term storage store at -20°C.  
Aliquot to avoid repeated freezing and thawing.

**Note**

This product contains sodium azide: a POISONOUS AND HAZARDOUS SUBSTANCE which should be handled by trained staff only.

## Applications

- Western Blot (Cell lysate)

Western blot analysis using KLF15 monoclonal antibody, clone 2G8 (Cat # MAB10713) against HepG2 (1) and SMMC-7721 (2) cell lysate.

- Enzyme-linked Immunoabsorbent Assay

## Gene Info — KLF15

Entrez GeneID	<a href="#">28999</a>
Gene Name	KLF15
Gene Alias	DKFZp779M1320, KKLF
Gene Description	Kruppel-like factor 15
Omim ID	<a href="#">606465</a>
Gene Ontology	<a href="#">Hyperlink</a>
Other Designations	kidney-enriched Kruppel-like factor

## Disease

- [Diabetes Mellitus](#)
- [Genetic Predisposition to Disease](#)