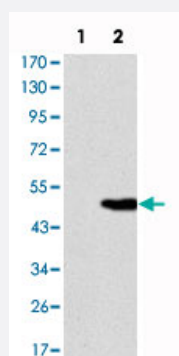


KIF22 monoclonal antibody, clone 1E3

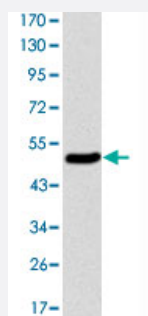
Catalog # MAB10711 Size 100 uL

Applications



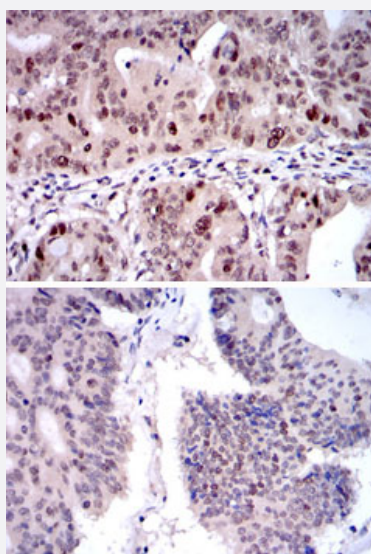
Western Blot (Transfected lysate)

Western blot analysis using KIF22 monoclonal antibody, clone 1E3 (Cat # MAB10711) against HEK293 (1) and KIF22-hlgGfC transfected HEK293 (2) cell lysate.



Western Blot (Recombinant protein)

Western blot analysis using KIF22 monoclonal antibody, clone 1E3 (Cat # MAB10711) against recombinant protein.

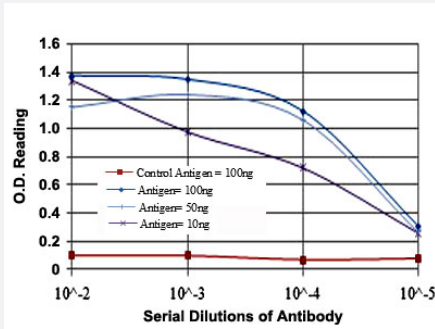


Immunohistochemistry (Formalin/PFA-fixed paraffin-embedded sections)

Immunohistochemical analysis of paraffin-embedded human rectum cancer (upper) and human colon cancer (bottom) tissues using KIF22 monoclonal antibody, clone 1E3 (Cat # MAB10711) with DAB staining.

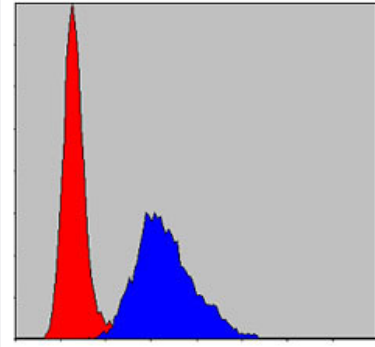
Enzyme-linked Immunoabsorbent Assay

ELISA measurement of KIF22 monoclonal antibody, clone 1E3 (Cat # MAB10711) .



Flow Cytometry

Flow cytometric analysis of NIH/3T3 cells using KIF22 monoclonal antibody, clone 1E3 (Cat # MAB10711) (blue) and negative control (red).



Specification

Product Description	Mouse monoclonal antibody raised against partial recombinant KIF22.
Immunogen	Recombinant protein corresponding to human KIF22.
Host	Mouse
Theoretical MW (kDa)	73
Reactivity	Human
Form	Liquid
Isotype	IgG1
Recommend Usage	ELISA (1:10000) Western Blot (1:500-1:2000) Immunohistochemistry (1:200-1:1000) Flow cytometry (1:200-1:400) The optimal working dilution should be determined by the end user.
Storage Buffer	In ascites (0.03% sodium azide)
Storage Instruction	Store at 4°C. For long term storage store at -20°C. Aliquot to avoid repeated freezing and thawing.

Note

This product contains sodium azide: a POISONOUS AND HAZARDOUS SUBSTANCE which should be handled by trained staff only.

Applications

- Western Blot (Transfected lysate)

Western blot analysis using KIF22 monoclonal antibody, clone 1E3 (Cat # MAB10711) against HEK293 (1) and KIF22-hlgFc transfected HEK293 (2) cell lysate.

- Western Blot (Recombinant protein)

Western blot analysis using KIF22 monoclonal antibody, clone 1E3 (Cat # MAB10711) against recombinant protein.

- Immunohistochemistry (Formalin/PFA-fixed paraffin-embedded sections)

Immunohistochemical analysis of paraffin-embedded human rectum cancer (upper) and human colon cancer (bottom) tissues using KIF22 monoclonal antibody, clone 1E3 (Cat # MAB10711) with DAB staining.

- Enzyme-linked Immunoabsorbent Assay

ELISA measurement of KIF22 monoclonal antibody, clone 1E3 (Cat # MAB10711).

- Flow Cytometry

Flow cytometric analysis of NIH/3T3 cells using KIF22 monoclonal antibody, clone 1E3 (Cat # MAB10711) (blue) and negative control (red).

Gene Info — KIF22

Entrez GeneID [3835](#)

Gene Name KIF22

Gene Alias KID, KNSL4, OBP, OBP-1, OBP-2

Gene Description kinesin family member 22

Omim ID [603213](#)

Gene Ontology [Hyperlink](#)

Gene Summary The protein encoded by this gene is a member of kinesin-like protein family. This family of proteins are microtubule-dependent molecular motors that transport organelles within cells and move chromosomes during cell division. The C-terminal half of this protein has been shown to bind DNA. Studies with the Xenopus homolog suggests its essential role in metaphase chromosome alignment and maintenance. [provided by RefSeq]

Other Designations

kinesin-like 4|oriP binding protein|origin of plasmid DNA replication-binding protein
