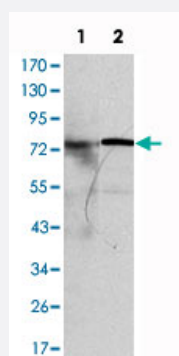


KIF22 monoclonal antibody, clone 5F3

Catalog # MAB10710

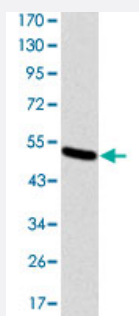
Size 100 uL

Applications



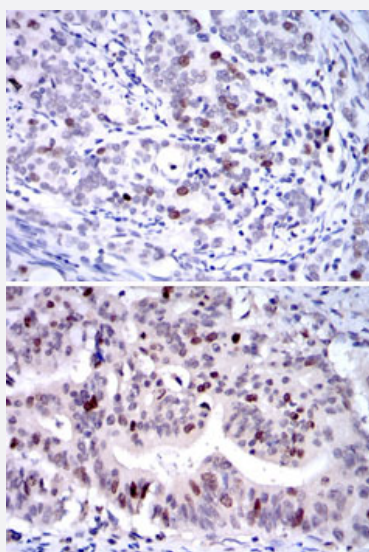
Western Blot (Cell lysate)

Western blot analysis using KIF22 monoclonal antibody, clone 5F3 (Cat # MAB10710) against MCF-7 (1) and HeLa (2) cell lysate.



Western Blot (Recombinant protein)

Western blot analysis using KIF22 monoclonal antibody, clone 5F3 (Cat # MAB10710) against recombinant protein.

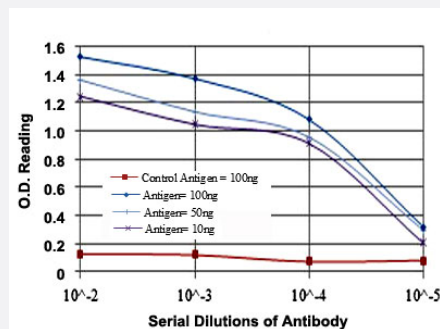


Immunohistochemistry (Formalin/PFA-fixed paraffin-embedded sections)

Immunohistochemical analysis of paraffin-embedded human cervical cancer (upper) and human rectum cancer (bottom) tissues using KIF22 monoclonal antibody, clone 5F3 (Cat # MAB10710) with DAB staining.

Enzyme-linked Immunoabsorbent Assay

ELISA measurement of KIF22 monoclonal antibody, clone 5F3 (Cat # MAB10710) .



Specification

Product Description Mouse monoclonal antibody raised against partial recombinant KIF22.

Immunogen Recombinant protein corresponding to human KIF22.

Host Mouse

Theoretical MW (kDa) 73

Reactivity Human

Form Liquid

Isotype IgG1

Recommend Usage ELISA (1:10000)
Western Blot (1:500-1:2000)
Immunohistochemistry (1:200-1:1000)
The optimal working dilution should be determined by the end user.

Storage Buffer In ascites (0.03% sodium azide)

Storage Instruction Store at 4°C. For long term storage store at -20°C.
Aliquot to avoid repeated freezing and thawing.

Note This product contains sodium azide: a POISONOUS AND HAZARDOUS SUBSTANCE which should be handled by trained staff only.

Applications

● Western Blot (Cell lysate)

Western blot analysis using KIF22 monoclonal antibody, clone 5F3 (Cat # MAB10710) against MCF-7 (1) and HeLa (2) cell lysate.

- Western Blot (Recombinant protein)

Western blot analysis using KIF22 monoclonal antibody, clone 5F3 (Cat # MAB10710) against recombinant protein.

- Immunohistochemistry (Formalin/PFA-fixed paraffin-embedded sections)

Immunohistochemical analysis of paraffin-embedded human cervical cancer (upper) and human rectum cancer (bottom) tissues using KIF22 monoclonal antibody, clone 5F3 (Cat # MAB10710) with DAB staining.

- Enzyme-linked Immunoabsorbent Assay

ELISA measurement of KIF22 monoclonal antibody, clone 5F3 (Cat # MAB10710) .

Gene Info — KIF22

Entrez GeneID [3835](#)

Gene Name KIF22

Gene Alias KID, KNSL4, OBP, OBP-1, OBP-2

Gene Description kinesin family member 22

Omim ID [603213](#)

Gene Ontology [Hyperlink](#)

Gene Summary The protein encoded by this gene is a member of kinesin-like protein family. This family of proteins are microtubule-dependent molecular motors that transport organelles within cells and move chromosomes during cell division. The C-terminal half of this protein has been shown to bind DNA. Studies with the Xenopus homolog suggests its essential role in metaphase chromosome alignment and maintenance. [provided by RefSeq]

Other Designations kinesin-like 4|oriP binding protein|origin of plasmid DNA replication-binding protein