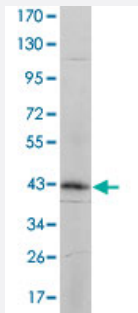


ITGA5 monoclonal antibody, clone 10F6

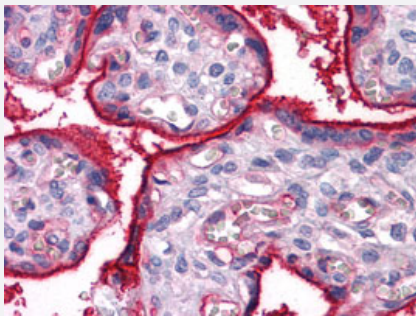
Catalog # MAB10703 Size 100 uL

Applications



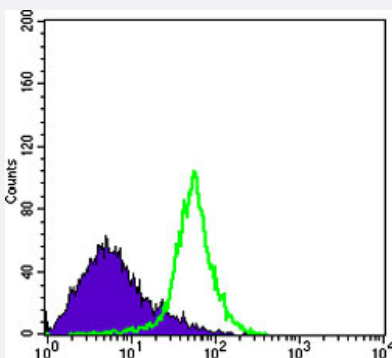
Western Blot (Transfected lysate)

Western blot analysis using ITGA5 monoclonal antibody, clone 10F6 (Cat # MAB10703) against ITGA5-hlgGfc transfected HEK293 cell lysate.



Immunohistochemistry (Formalin/PFA-fixed paraffin-embedded sections)

Immunohistochemical analysis of paraffin-embedded human placenta tissues using ITGA5 monoclonal antibody, clone 10F6 (Cat # MAB10703) .



Flow Cytometry

Flow cytometric analysis of HeLa cells using ITGA5 monoclonal antibody, clone 10F6 (Cat # MAB10703) (green) and negative control (purple).

Specification

Product Description

Mouse monoclonal antibody raised against partial recombinant ITGA5.

| | |
|-----------------------------|---|
| Immunogen | Recombinant protein corresponding to human ITGA5. |
| Host | Mouse |
| Theoretical MW (kDa) | 114 |
| Reactivity | Human |
| Form | Liquid |
| Isotype | IgG2a |
| Recommend Usage | ELISA (1:10000) Western Blot (1:500-1:2000) Immunohistochemistry (1:200-1:1000) Flow cytometry (1:200-1:400) The optimal working dilution should be determined by the end user. |
| Storage Buffer | In ascites (0.03% sodium azide) |
| Storage Instruction | Store at 4°C. For long term storage store at -20°C. Aliquot to avoid repeated freezing and thawing. |
| Note | This product contains sodium azide: a POISONOUS AND HAZARDOUS SUBSTANCE which should be handled by trained staff only. |

Applications

- Western Blot (Transfected lysate)

Western blot analysis using ITGA5 monoclonal antibody, clone 10F6 (Cat # MAB10703) against ITGA5-hlgGfc transfected HEK293 cell lysate.

- Immunohistochemistry (Formalin/PFA-fixed paraffin-embedded sections)

Immunohistochemical analysis of paraffin-embedded human placenta tissues using ITGA5 monoclonal antibody, clone 10F6 (Cat # MAB10703).

- Enzyme-linked Immunoabsorbent Assay

- Flow Cytometry

Flow cytometric analysis of HeLa cells using ITGA5 monoclonal antibody, clone 10F6 (Cat # MAB10703) (green) and negative control (purple).

Gene Info — ITGA5

| | |
|--------------------|--|
| Entrez GeneID | 3678 |
| Gene Name | ITGA5 |
| Gene Alias | CD49e, FNRA, VLA5A |
| Gene Description | integrin, alpha 5 (fibronectin receptor, alpha polypeptide) |
| Omim ID | 135620 |
| Gene Ontology | Hyperlink |
| Gene Summary | <p>The product of this gene belongs to the integrin alpha chain family. Integrins are heterodimeric integral membrane proteins composed of an alpha chain and a beta chain. This gene encodes the integrin alpha 5 chain. Alpha chain 5 undergoes post-translational cleavage in the extracellular domain to yield disulfide-linked light and heavy chains that join with beta 1 to form a fibronectin receptor. In addition to adhesion, integrins are known to participate in cell-surface mediated signalling. [provided by RefSeq]</p> |
| Other Designations | fibronectin receptor, alpha subunit integrin alpha 5 very late activation protein 5, alpha subunit |

Pathway

- [Arrhythmogenic right ventricular cardiomyopathy \(ARVC\)](#)
- [ECM-receptor interaction](#)
- [Focal adhesion](#)
- [Hematopoietic cell lineage](#)
- [Hypertrophic cardiomyopathy \(HCM\)](#)
- [Regulation of actin cytoskeleton](#)

Disease

- [Tobacco Use Disorder](#)