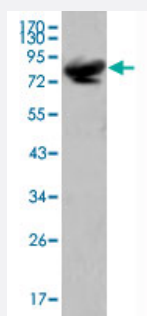


# ISL1 monoclonal antibody, clone 1H9

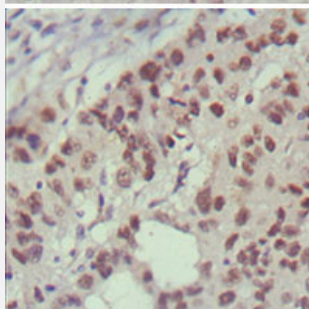
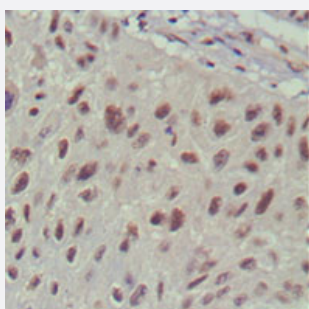
Catalog # MAB10702      Size 100 uL

## Applications



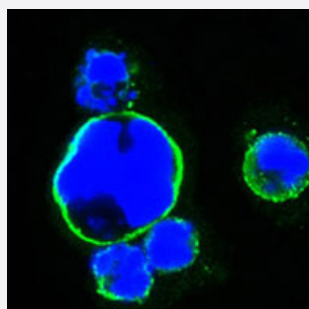
### Western Blot (Transfected lysate)

Western blot analysis using ISL1 monoclonal antibody, clone 1H9 (Cat # MAB10702) against full-length ISL1 (aa 1-349) -hlgGFc transfected HEK293 cell lysate.



### Immunohistochemistry (Formalin/PFA-fixed paraffin-embedded sections)

Immunohistochemical analysis of paraffin-embedded human lung cancer (upper) and cervical carcinoma (bottom) , showing nuclear localization using ISL1 monoclonal antibody, clone 1H9 (Cat # MAB10702) with DAB staining.



### Immunofluorescence

Confocal immunofluorescence analysis of HEK293 cells trasfected with full-length ISL1-hlgGFc using ISL1 monoclonal antibody, clone 1H9 (Cat # MAB10702) (green) . Blue: DRAQ5 fluorescent DNA dye.

## Specification

<b>Product Description</b>	Mouse monoclonal antibody raised against partial recombinant ISL1.
<b>Immunogen</b>	Recombinant protein corresponding to human ISL1.
<b>Host</b>	Mouse
<b>Theoretical MW (kDa)</b>	39
<b>Reactivity</b>	Human
<b>Form</b>	Liquid
<b>Isotype</b>	IgG1
<b>Recommend Usage</b>	ELISA (1:10000) Western Blot (1:500-1:2000) Immunohistochemistry (1:200-1:1000) Immunofluorescence (1:200-1:1000) The optimal working dilution should be determined by the end user.
<b>Storage Buffer</b>	In ascites (0.03% sodium azide)
<b>Storage Instruction</b>	Store at 4°C. For long term storage store at -20°C. Aliquot to avoid repeated freezing and thawing.
<b>Note</b>	This product contains sodium azide: a POISONOUS AND HAZARDOUS SUBSTANCE which should be handled by trained staff only.

## Applications

- Western Blot (Transfected lysate)

Western blot analysis using ISL1 monoclonal antibody, clone 1H9 (Cat # MAB10702) against full-length ISL1 (aa 1-349)-hlgGfc transfected HEK293 cell lysate.

- Immunohistochemistry (Formalin/PFA-fixed paraffin-embedded sections)

Immunohistochemical analysis of paraffin-embedded human lung cancer (upper) and cervical carcinoma (bottom), showing nuclear localization using ISL1 monoclonal antibody, clone 1H9 (Cat # MAB10702) with DAB staining.

- Immunofluorescence

Confocal immunofluorescence analysis of HEK293 cells transfected with full-length ISL1-hlgGfc using ISL1 monoclonal antibody, clone 1H9 (Cat # MAB10702) (green). Blue: DRAQ5 fluorescent DNA dye.

- Enzyme-linked Immunoabsorbent Assay

## Gene Info — ISL1

Entrez GeneID	<a href="#">3670</a>
Gene Name	ISL1
Gene Alias	Isl-1
Gene Description	ISL LIM homeobox 1
Omim ID	<a href="#">600366</a>
Gene Ontology	<a href="#">Hyperlink</a>
Gene Summary	This gene encodes a member of the LIM/homeodomain family of transcription factors. The encoded protein binds to the enhancer region of the insulin gene, among others, and may play an important role in regulating insulin gene expression. The encoded protein is central to the development of pancreatic cell lineages and may also be required for motor neuron generation. Mutations in this gene have been associated with maturity-onset diabetes of the young. [provided by RefSeq]
Other Designations	ISL1 transcription factor, LIM/homeodomain islet-1

## Disease

- [Attention Deficit Disorder with Hyperactivity](#)
- [Diabetes Mellitus](#)
- [Genetic Predisposition to Disease](#)
- [Heart Defects](#)
- [Tourette Syndrome](#)