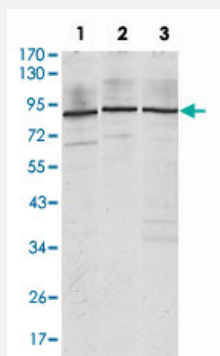


# IGF2BP3 monoclonal antibody, clone 8F11

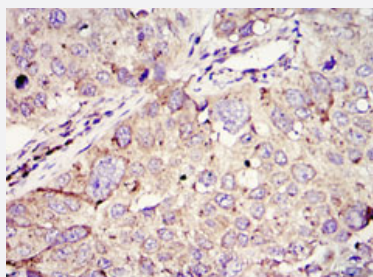
Catalog # MAB10694      Size 100 uL

## Applications



### Western Blot (Cell lysate)

Western blot analysis using IGF2BP3 monoclonal antibody, clone 8F11 (Cat # MAB10694) against Jurkat (1) , K-562 (2) and NTERA-2 (3) cell lysate.



### Immunohistochemistry (Formalin/PFA-fixed paraffin-embedded sections)

Immunohistochemical analysis of paraffin-embedded human lung cancer (upper) and colon tumour tissues (bottom) using IGF2BP3 monoclonal antibody, clone 8F11 (Cat # MAB10694) with DAB staining.

## Specification

<b>Product Description</b>	Mouse monoclonal antibody raised against partial recombinant IGF2BP3.
<b>Immunogen</b>	Recombinant protein corresponding to human IGF2BP3.
<b>Host</b>	Mouse

Theoretical MW (kDa)	69
Reactivity	Human
Form	Liquid
Isotype	IgG1
Recommend Usage	ELISA (1:10000) Western Blot (1:500-1:2000) Immunohistochemistry (1:200-1:1000) The optimal working dilution should be determined by the end user.
Storage Buffer	In ascites (0.03% sodium azide)
Storage Instruction	Store at 4°C. For long term storage store at -20°C. Aliquot to avoid repeated freezing and thawing.
Note	This product contains sodium azide: a POISONOUS AND HAZARDOUS SUBSTANCE which should be handled by trained staff only.

## Applications

- Western Blot (Cell lysate)

Western blot analysis using IGF2BP3 monoclonal antibody, clone 8F11 (Cat # MAB10694) against Jurkat (1) , K-562 (2) and NTERA-2 (3) cell lysate.

- Immunohistochemistry (Formalin/PFA-fixed paraffin-embedded sections)

Immunohistochemical analysis of paraffin-embedded human lung cancer (upper) and colon tumour tissues (bottom) using IGF2BP3 monoclonal antibody, clone 8F11 (Cat # MAB10694) with DAB staining.

- Enzyme-linked Immunoabsorbent Assay

## Gene Info — IGF2BP3

Entrez GeneID	<a href="#">10643</a>
Gene Name	IGF2BP3
Gene Alias	DKFZp686F1078, IMP-3, IMP3, KOC1, VICKZ3
Gene Description	insulin-like growth factor 2 mRNA binding protein 3
Omim ID	<a href="#">608259</a>

## Gene Ontology

[Hyperlink](#)

## Gene Summary

The protein encoded by this gene is primarily found in the nucleolus, where it can bind to the 5' UTR of the insulin-like growth factor II leader 3 mRNA and may repress translation of insulin-like growth factor II during late development. The encoded protein contains several KH domains, which are important in RNA binding and are known to be involved in RNA synthesis and metabolism. A pseudogene exists on chromosome 7, and there are putative pseudogenes on other chromosomes. [provided by RefSeq]

## Other Designations

IGF II mRNA binding protein 3|IGF-II mRNA-binding protein 3|KH domain containing protein overexpressed in cancer

## Disease

- [Cardiovascular Diseases](#)
- [Diabetes Mellitus](#)
- [Edema](#)
- [Genetic Predisposition to Disease](#)
- [Metabolic Syndrome X](#)
- [Obesity](#)
- [Tobacco Use Disorder](#)