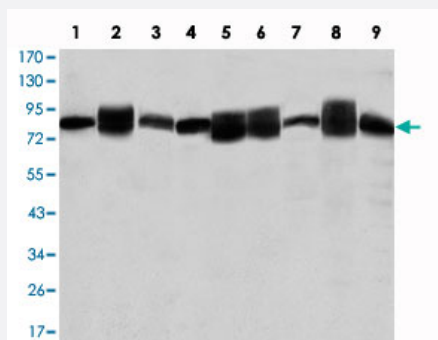


HSP90AB1 monoclonal antibody, clone 5G4

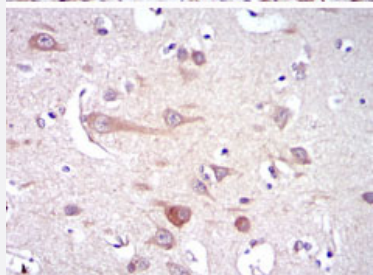
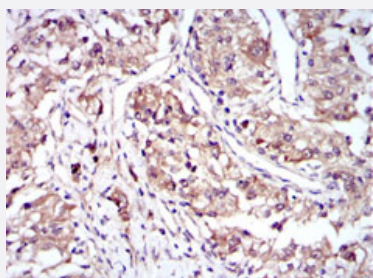
Catalog # MAB10686 Size 100 uL

Applications



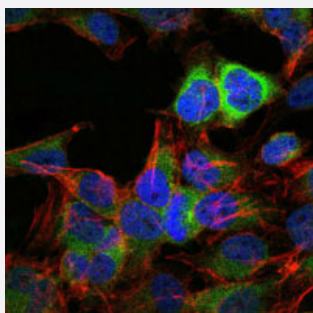
Western Blot (Cell lysate)

Western blot analysis using HSP90AB1 monoclonal antibody, clone 5G4 (Cat # MAB10686) against Jurkat (1) , A-431 (2) , HeLa (3) , A-549 (4) , HEK293 (5) , K-562 (6) , NIH/3T3 (7) , PC-12 (8) and COS-7 (9) cell lysate.



Immunohistochemistry (Formalin/PFA-fixed paraffin-embedded sections)

Immunohistochemical analysis of paraffin-embedded human kidney cancer tissues (upper) and brain tissues (bottom) using HSP90AB1 monoclonal antibody, clone 5G4 (Cat # MAB10686) with DAB staining.

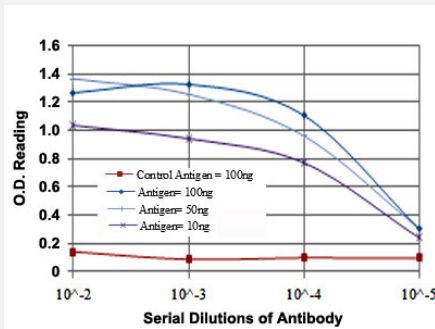


Immunofluorescence

Immunofluorescence analysis of HeLa cells using HSP90AB1 monoclonal antibody, clone 5G4 (Cat # MAB10686) (green) . Blue: DRAQ5 fluorescent DNA dye. Red: Actin filaments have been labeled with Alexa Fluor-555 phalloidin.

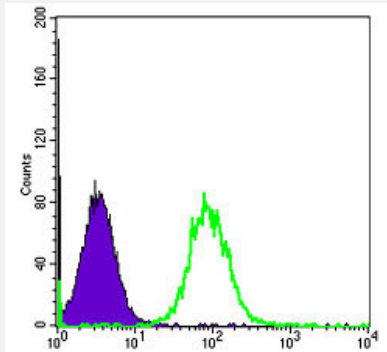
Enzyme-linked Immunoabsorbent Assay

ELISA measurement of HSP90AB1 monoclonal antibody, clone 5G4 (Cat # MAB10686) .



Flow Cytometry

Flow cytometric analysis of HeLa cells using HSP90AB1 monoclonal antibody, clone 5G4 (Cat # MAB10686) (green) and negative control (purple).



Specification

Product Description Mouse monoclonal antibody raised against partial recombinant HSP90AB1.

Immunogen Recombinant protein corresponding to human HSP90AB1.

Host Mouse

Theoretical MW (kDa) 84

Reactivity Human, Monkey, Mouse, Rat

Form Liquid

Isotype IgG1

Recommend Usage

- ELISA (1:10000)
- Western Blot (1:500-1:2000)
- Immunohistochemistry (1:200-1:1000)
- Immunofluorescence (1:200-1:1000)
- Flow cytometry (1:200-1:400)
- The optimal working dilution should be determined by the end user.

Storage Buffer In ascites (0.03% sodium azide)

Storage Instruction

- Store at 4°C. For long term storage store at -20°C.
- Aliquot to avoid repeated freezing and thawing.

Note

This product contains sodium azide: a POISONOUS AND HAZARDOUS SUBSTANCE which should be handled by trained staff only.

Applications

- Western Blot (Cell lysate)

Western blot analysis using HSP90AB1 monoclonal antibody, clone 5G4 (Cat # MAB10686) against Jurkat (1) , A-431 (2) , HeLa (3) , A-549 (4) , HEK293 (5) , K-562 (6) , NIH/3T3 (7) , PC-12 (8) and COS-7 (9) cell lysate.

- Immunohistochemistry (Formalin/PFA-fixed paraffin-embedded sections)

Immunohistochemical analysis of paraffin-embedded human kidney cancer tissues (upper) and brain tissues (bottom) using HSP90AB1 monoclonal antibody, clone 5G4 (Cat # MAB10686) with DAB staining.

- Immunofluorescence

Immunofluorescence analysis of HeLa cells using HSP90AB1 monoclonal antibody, clone 5G4 (Cat # MAB10686) (green) . Blue: DRAQ5 fluorescent DNA dye. Red: Actin filaments have been labeled with Alexa Fluor-555 phalloidin.

- Enzyme-linked Immunoabsorbent Assay

ELISA measurement of HSP90AB1 monoclonal antibody, clone 5G4 (Cat # MAB10686) .

- Flow Cytometry

Flow cytometric analysis of HeLa cells using HSP90AB1 monoclonal antibody, clone 5G4 (Cat # MAB10686) (green) and negative control (purple).

Gene Info — HSP90AB1

Entrez GeneID[3326](#)**Gene Name**

HSP90AB1

Gene Alias

D6S182, FLJ26984, HSP90-BETA, HSP90B, HSPC2, HSPCB

Gene Description

heat shock protein 90kDa alpha (cytosolic), class B member 1

Omim ID[140572](#)**Gene Ontology**[Hyperlink](#)

Gene Summary

HSP90 proteins are highly conserved molecular chaperones that have key roles in signal transduction, protein folding, protein degradation, and morphologic evolution. HSP90 proteins normally associate with other cochaperones and play important roles in folding newly synthesized proteins or stabilizing and refolding denatured proteins after stress. There are 2 major cytosolic HSP90 proteins, HSP90AA1 (MIM 140571), an inducible form, and HSP90AB1, a constitutive form. Other HSP90 proteins are found in endoplasmic reticulum (HSP90B1; MIM 191175) and mitochondria (TRAP1; MIM 606219) (Chen et al., 2005 [PubMed 16269234]).[supplied by OMIM]

Other Designations

OTTHUMP00000016517|OTTHUMP00000016518|OTTHUMP00000016519|OTTHUMP00000039869|heat shock 90kD protein 1, beta|heat shock 90kDa protein 1, beta|heat shock protein beta

Pathway

- [Antigen processing and presentation](#)
- [Pathways in cancer](#)
- [Prostate cancer](#)

Disease

- [Asthma](#)
- [Cardiovascular Diseases](#)
- [Diabetes Mellitus](#)
- [Edema](#)
- [Genetic Predisposition to Disease](#)
- [Hematologic Diseases](#)
- [Kidney Failure](#)
- [Occupational Diseases](#)