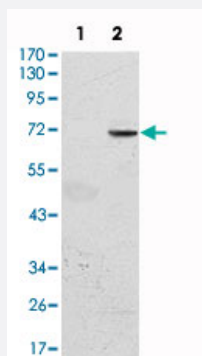


GF11 monoclonal antibody, clone 5D7

Catalog # MAB10668 Size 100 uL

Applications



Western Blot (Transfected lysate)

Western blot analysis using GF11 monoclonal antibody, clone 5D7 (Cat # MAB10668) against HEK293 (1) and GF11-hlgGFc transfected HEK293 (2) cell lysate.

Specification

Product Description Mouse monoclonal antibody raised against partial recombinant GF11.

Immunogen Recombinant protein corresponding to human GF11.

Host Mouse

Theoretical MW (kDa) 45

Reactivity Human

Form Liquid

Isotype IgG1

Recommend Usage ELISA (1:10000)
Western Blot (1:500-1:2000)
The optimal working dilution should be determined by the end user.

Storage Buffer In ascites (0.03% sodium azide)

Storage Instruction Store at 4°C. For long term storage store at -20°C.
Aliquot to avoid repeated freezing and thawing.

Note

This product contains sodium azide: a POISONOUS AND HAZARDOUS SUBSTANCE which should be handled by trained staff only.

Applications

- Western Blot (Transfected lysate)

Western blot analysis using GFI1 monoclonal antibody, clone 5D7 (Cat # MAB10668) against HEK293 (1) and GFI1-hlgGFc transfected HEK293 (2) cell lysate.

- Enzyme-linked Immunoabsorbent Assay

Gene Info — GFI1

Entrez GeneID [2672](#)

Gene Name GFI1

Gene Alias FLJ94509, GFI-1, ZNF163

Gene Description growth factor independent 1 transcription repressor

Omim ID [202700](#) [600871](#) [607847](#)

Gene Ontology [Hyperlink](#)

Gene Summary This gene encodes a nuclear zinc finger protein that functions as a transcriptional repressor. This protein plays a role in diverse developmental contexts, including hematopoiesis and oncogenesis. It functions as part of a complex along with other cofactors to control histone modifications that lead to silencing of the target gene promoters. Mutations in this gene cause autosomal dominant severe congenital neutropenia, and also dominant nonimmune chronic idiopathic neutropenia of adults, which are heterogeneous hematopoietic disorders that cause predispositions to leukemias and infections. Multiple alternatively spliced variants, encoding the same protein, have been identified for this gene. [provided by RefSeq]

Other Designations OTTHUMP00000012582|OTTHUMP00000012583|growth factor independence-1|growth factor independent 1|zinc finger protein 163|zinc finger protein Gfi-1

Disease

- [Genetic Predisposition to Disease](#)
- [Leukemia](#)

- [Multiple Sclerosis](#)
- [Translocation](#)