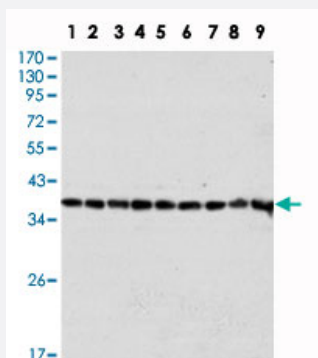


# GAPDH monoclonal antibody, clone 1A10

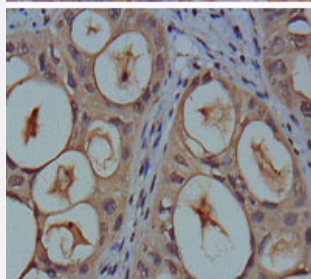
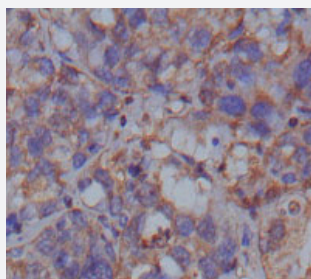
Catalog # MAB10662      Size 100 uL

## Applications



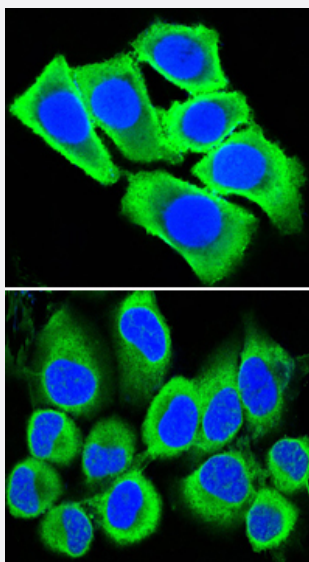
### Western Blot (Cell lysate)

Western blot analysis using GAPDH monoclonal antibody, clone 1A10 (Cat # MAB10662) against HeLa (1) , A-549 (2) , A-431 (3) , MCF-7 (4) , K-562 (5) , Jurkat (6) , HL-60 (7) , SKN-SH (8) and SK-BR-3 (9) cell lysate.



### Immunohistochemistry (Formalin/PFA-fixed paraffin-embedded sections)

Immunohistochemical analysis of paraffin-embedded human breast carcinoma (upper) and kidney carcinoma (bottom) , showing cytoplasmic localization using GAPDH monoclonal antibody, clone 1A10 (Cat # MAB10662) with DAB staining.



### Immunofluorescence

Confocal immunofluorescence analysis of methanol-fixed HepG2 (upper) and HeLa (bottom) cells using GAPDH monoclonal antibody, clone 1A10 (Cat # MAB10662) (green) , showing cytoplasmic localization. Blue: DRAQ5 fluorescent DNA dye.

## Specification

**Product Description** Mouse monoclonal antibody raised against partial recombinant GAPDH.

**Immunogen** Recombinant protein corresponding to human GAPDH.

**Host** Mouse

**Theoretical MW (kDa)** 37

**Reactivity** Human

**Form** Liquid

**Isotype** IgG1

**Recommend Usage**  
 ELISA (1:10000)  
 Western Blot (1:500-1:2000)  
 Immunohistochemistry (1:200-1:1000)  
 Immunofluorescence (1:200-1:1000)  
 The optimal working dilution should be determined by the end user.

**Storage Buffer** In ascites (0.03% sodium azide)

**Storage Instruction**  
 Store at 4°C. For long term storage store at -20°C.  
 Aliquot to avoid repeated freezing and thawing.

**Note** This product contains sodium azide: a POISONOUS AND HAZARDOUS SUBSTANCE which should be handled by trained staff only.

## Applications

- Western Blot (Cell lysate)

Western blot analysis using GAPDH monoclonal antibody, clone 1A10 (Cat # MAB10662) against HeLa (1) , A-549 (2) , A-431 (3) , MCF-7 (4) , K-562 (5) , Jurkat (6) , HL-60 (7) , SKN-SH (8) and SK-BR-3 (9) cell lysate.

- Immunohistochemistry (Formalin/PFA-fixed paraffin-embedded sections)

Immunohistochemical analysis of paraffin-embedded human breast carcinoma (upper) and kidney carcinoma (bottom) , showing cytoplasmic localization using GAPDH monoclonal antibody, clone 1A10 (Cat # MAB10662) with DAB staining.

- Immunofluorescence

Confocal immunofluorescence analysis of methanol-fixed HepG2 (upper) and HeLa (bottom) cells using GAPDH monoclonal antibody, clone 1A10 (Cat # MAB10662) (green) , showing cytoplasmic localization. Blue: DRAQ5 fluorescent DNA dye.

- Enzyme-linked Immunoabsorbent Assay

## Gene Info — GAPDH

Entrez GeneID	<a href="#">2597</a>
Gene Name	GAPDH
Gene Alias	G3PD, GAPD, MGC88685
Gene Description	glyceraldehyde-3-phosphate dehydrogenase
Omim ID	<a href="#">138400</a>
Gene Ontology	<a href="#">Hyperlink</a>
Gene Summary	The product of this gene catalyzes an important energy-yielding step in carbohydrate metabolism, the reversible oxidative phosphorylation of glyceraldehyde-3-phosphate in the presence of inorganic phosphate and nicotinamide adenine dinucleotide (NAD). The enzyme exists as a tetramer of identical chains. Many pseudogenes similar to this locus are present in the human genome. [provided by RefSeq]
Other Designations	OTTHUMP00000174431 OTTHUMP00000174432 aging-associated gene 9 protein glyceraldehyde 3-phosphate dehydrogenase

## Pathway

- [Biosynthesis of alkaloids derived from histidine and purine](#)
- [Biosynthesis of alkaloids derived from ornithine](#)
- [Biosynthesis of alkaloids derived from shikimate pathway](#)
- [Biosynthesis of alkaloids derived from terpenoid and polyketide](#)
- [Biosynthesis of phenylpropanoids](#)
- [Biosynthesis of plant hormones](#)
- [Biosynthesis of terpenoids and steroids](#)
- [Glycolysis / Gluconeogenesis](#)
- [Metabolic pathways](#)

## Disease

- [Alzheimer disease](#)
- [Cardiovascular Diseases](#)
- [Diabetes Complications](#)
- [Metabolic Syndrome X](#)
- [Neoplasms](#)
- [Nerve Degeneration](#)
- [Osteoporosis](#)