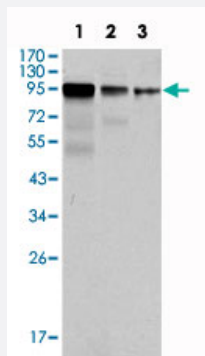


FER monoclonal antibody, clone 5D2C4

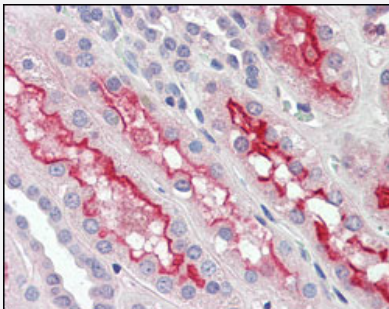
Catalog # MAB10645 Size 100 uL

Applications



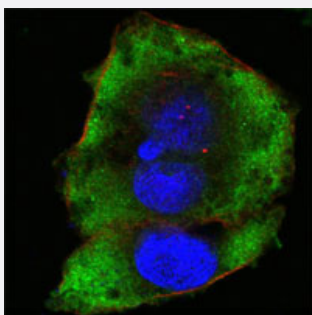
Western Blot (Cell lysate)

Western blot analysis using FER monoclonal antibody, clone 5D2C4 (Cat # MAB10645) against NIH/3T3 (1) , A-549 (2) and SK-MEL-5 (3) cell lysate.



Immunohistochemistry (Formalin/PFA-fixed paraffin-embedded sections)

Immunohistochemical analysis of paraffin-embedded human kidney tissues using FER monoclonal antibody, clone 5D2C4 (Cat # MAB10645) .



Immunofluorescence

Confocal immunofluorescence analysis of HeLa cells using FER monoclonal antibody, clone 5D2C4 (Cat # MAB10645) (green) . Red: Actin filaments have been labeled with Alexa Fluor-555 phalloidin. Blue: DRAQ5 fluorescent DNA dye.

Specification

Product Description

Mouse monoclonal antibody raised against partial recombinant FER.

Immunogen	Recombinant protein corresponding to human FER.
Host	Mouse
Theoretical MW (kDa)	95
Reactivity	Human, Mouse
Form	Liquid
Isotype	IgG1
Recommend Usage	ELISA (1:10000) Western Blot (1:500-1:2000) Immunohistochemistry (1:200-1:1000) Immunofluorescence (1:200-1:1000) The optimal working dilution should be determined by the end user.
Storage Buffer	In ascites (0.03% sodium azide)
Storage Instruction	Store at 4°C. For long term storage store at -20°C. Aliquot to avoid repeated freezing and thawing.
Note	This product contains sodium azide: a POISONOUS AND HAZARDOUS SUBSTANCE which should be handled by trained staff only.

Applications

- Western Blot (Cell lysate)

Western blot analysis using FER monoclonal antibody, clone 5D2C4 (Cat # MAB10645) against NIH/3T3 (1), A-549 (2) and SK-MEL-5 (3) cell lysate.

- Immunohistochemistry (Formalin/PFA-fixed paraffin-embedded sections)

Immunohistochemical analysis of paraffin-embedded human kidney tissues using FER monoclonal antibody, clone 5D2C4 (Cat # MAB10645).

- Immunofluorescence

Confocal immunofluorescence analysis of HeLa cells using FER monoclonal antibody, clone 5D2C4 (Cat # MAB10645) (green). Red: Actin filaments have been labeled with Alexa Fluor-555 phalloidin. Blue: DRAQ5 fluorescent DNA dye.

- Enzyme-linked Immunoabsorbent Assay

Gene Info — FER

Entrez GeneID	2241
Gene Name	FER
Gene Alias	TYK3
Gene Description	fer (fps/fes related) tyrosine kinase
Omim ID	176942
Gene Ontology	Hyperlink
Gene Summary	Fer protein is a member of the FPS/FES family of nontransmembrane receptor tyrosine kinases. It regulates cell-cell adhesion and mediates signaling from the cell surface to the cytoskeleton via growth factor receptors. [provided by RefSeq]
Other Designations	phosphoprotein NCP94

Pathway

- [Adherens junction](#)

Disease

- [Cardiovascular Diseases](#)
- [Diabetes Mellitus](#)
- [Edema](#)