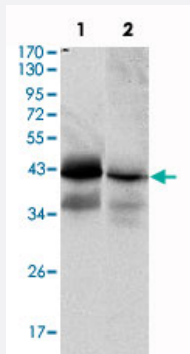


# EPCAM monoclonal antibody, clone 7E11

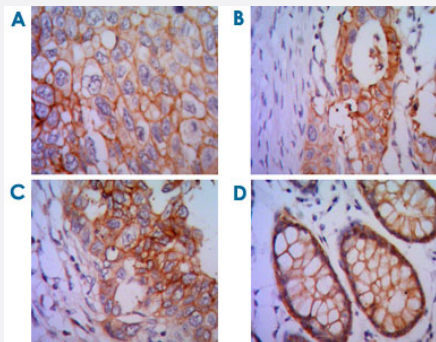
Catalog # MAB10634      Size 100 uL

## Applications



### Western Blot (Cell lysate)

Western blot analysis using EPCAM monoclonal antibody, clone 7E11 (Cat # MAB10634) against HTC116 (1) and T-47D (2) cell lysate.



### Immunohistochemistry (Formalin/PFA-fixed paraffin-embedded sections)

Immunohistochemical analysis of paraffin-embedded human lung cancer (A), colon cancer (B), breast cancer (C) and rectal cancer (D), using EPCAM monoclonal antibody, clone 7E11 (Cat # MAB10634) with DAB staining.

## Specification

<b>Product Description</b>	Mouse monoclonal antibody raised against partial recombinant EPCAM.
<b>Immunogen</b>	Recombinant protein corresponding to human EPCAM.
<b>Host</b>	Mouse
<b>Theoretical MW (kDa)</b>	35
<b>Reactivity</b>	Human
<b>Form</b>	Liquid

Isotype	IgG1
Recommend Usage	ELISA (1:10000) Western Blot (1:500-1:2000) Immunohistochemistry (1:200-1:1000) The optimal working dilution should be determined by the end user.
Storage Buffer	In ascites (0.03% sodium azide)
Storage Instruction	Store at 4°C. For long term storage store at -20°C. Aliquot to avoid repeated freezing and thawing.
Note	This product contains sodium azide: a POISONOUS AND HAZARDOUS SUBSTANCE which should be handled by trained staff only.

## Applications

- Western Blot (Cell lysate)

Western blot analysis using EPCAM monoclonal antibody, clone 7E11 (Cat # MAB10634) against HTC116 (1) and T-47D (2) cell lysate.

- Immunohistochemistry (Formalin/PFA-fixed paraffin-embedded sections)

Immunohistochemical analysis of paraffin-embedded human lung cancer (A) , colon cancer (B) , breast cancer (C) and rectal cancer (D) , using EPCAM monoclonal antibody, clone 7E11 (Cat # MAB10634) with DAB staining.

- Enzyme-linked Immunoabsorbent Assay

## Gene Info — EPCAM

Entrez GeneID	<a href="#">4072</a>
Gene Name	EPCAM
Gene Alias	17-1A, 323/A3, CD326, CO-17A, CO17-1A, EGP, EGP-2, EGP34, EGP40, ESA, Ep-CAM, GA7 33-2, HEA125, KS1/4, KSA, M4S1, MH99, MIC18, MK-1, MOC31, TACST-1, TACSTD1, TROP 1, hEGP-2
Gene Description	epithelial cell adhesion molecule
Omim ID	<a href="#">185535</a>
Gene Ontology	<a href="#">Hyperlink</a>

**Gene Summary**

This gene encodes a carcinoma-associated antigen and is a member of a family that includes at least two type I membrane proteins. This antigen is expressed on most normal epithelial cells and gastrointestinal carcinomas and functions as a homotypic calcium-independent cell adhesion molecule. The antigen is being used as a target for immunotherapy treatment of human carcinomas. Mutations in this gene result in congenital tufting enteropathy. [provided by RefSeq]

**Other Designations**

adenocarcinoma-associated antigen|carcinoma-associated antigen GA733-2|human epithelial glycoprotein-2|membrane component, chromosome 4, surface marker (35kD glycoprotein)|tumor-associated calcium signal transducer 1

**Disease**

- [Genetic Predisposition to Disease](#)
- [Ovarian Neoplasms](#)