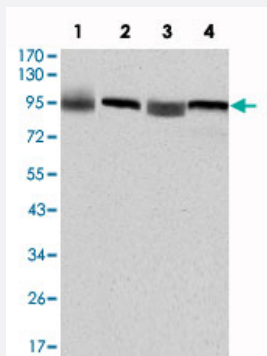


EEF2 monoclonal antibody, clone 5B6

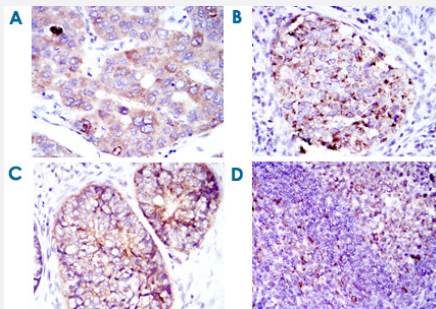
Catalog # MAB10629 Size 100 uL

Applications



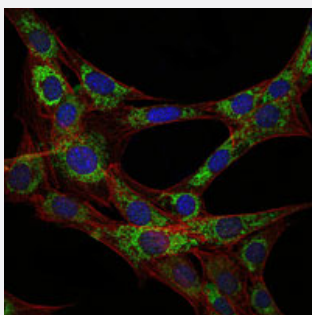
Western Blot (Cell lysate)

Western blot analysis using EEF2 monoclonal antibody, clone 5B6 (Cat # MAB10629) against HepG2 (1) , HeLa (2) , HEK293 (3) and A-431 (4) cell lysate.



Immunohistochemistry (Formalin/PFA-fixed paraffin-embedded sections)

Immunohistochemical analysis of paraffin-embedded human liver cancer tissues (A) , kidney cancer tissues (B) , prostate using EEF2 monoclonal antibody, clone 5B6 (Cat # MAB10629) .

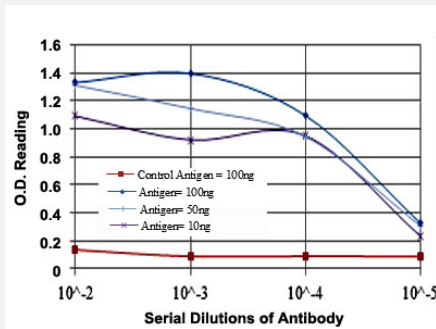


Immunofluorescence

Immunofluorescence analysis of 3T3-L1 cells using EEF2 monoclonal antibody, clone 5B6 (Cat # MAB10629) (green) . Blue: DRAQ5 fluorescent DNA dye. Red: Actin filaments have been labeled with Alexa Fluor-555 phalloidin.

Enzyme-linked Immunoabsorbent Assay

ELISA measurement of EEF2 monoclonal antibody, clone 5B6 (Cat # MAB10629) .



Specification

Product Description Mouse monoclonal antibody raised against partial recombinant EEF2.

Immunogen Recombinant protein corresponding to human EEF2.

Host Mouse

Theoretical MW (kDa) 95

Reactivity Human

Form Liquid

Isotype IgG1

Recommend Usage
 ELISA (1:10000)
 Western Blot (1:500-1:2000)
 Immunofluorescence (1:200-1:1000)
 The optimal working dilution should be determined by the end user.

Storage Buffer In ascites (0.03% sodium azide)

Storage Instruction
 Store at 4°C. For long term storage store at -20°C.
 Aliquot to avoid repeated freezing and thawing.

Note This product contains sodium azide: a POISONOUS AND HAZARDOUS SUBSTANCE which should be handled by trained staff only.

Applications

• Western Blot (Cell lysate)

Western blot analysis using EEF2 monoclonal antibody, clone 5B6 (Cat # MAB10629) against HepG2 (1) , HeLa (2) , HEK293 (3) and A-431 (4) cell lysate.

- Immunohistochemistry (Formalin/PFA-fixed paraffin-embedded sections)

Immunohistochemical analysis of paraffin-embedded human liver cancer tissues (A) , kidney cancer tissues (B) , prostate using EEf2 monoclonal antibody, clone 5B6 (Cat # MAB10629) .

- Immunofluorescence

Immunofluorescence analysis of 3T3-L1 cells using EEf2 monoclonal antibody, clone 5B6 (Cat # MAB10629) (green) . Blue: DRAQ5 fluorescent DNA dye. Red: Actin filaments have been labeled with Alexa Fluor-555 phalloidin.

- Enzyme-linked Immunoabsorbent Assay

ELISA measurement of EEf2 monoclonal antibody, clone 5B6 (Cat # MAB10629) .

Gene Info — EEf2

Entrez GeneID [1938](#)

Gene Name EEf2

Gene Alias EEf-2, EF2

Gene Description eukaryotic translation elongation factor 2

Omim ID [130610](#)

Gene Ontology [Hyperlink](#)

Gene Summary This gene encodes a member of the GTP-binding translation elongation factor family. This protein is an essential factor for protein synthesis. It promotes the GTP-dependent translocation of the nascent protein chain from the A-site to the P-site of the ribosome. This protein is completely inactivated by EF-2 kinase phosphorylation. [provided by RefSeq]

Other Designations polypeptidyl-tRNA translocase

Disease

- [Tobacco Use Disorder](#)