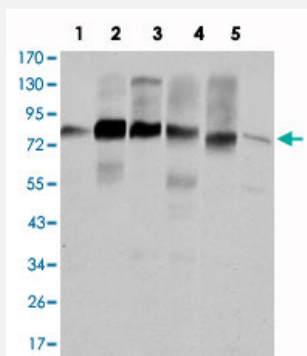


CTTN monoclonal antibody, clone 4C6

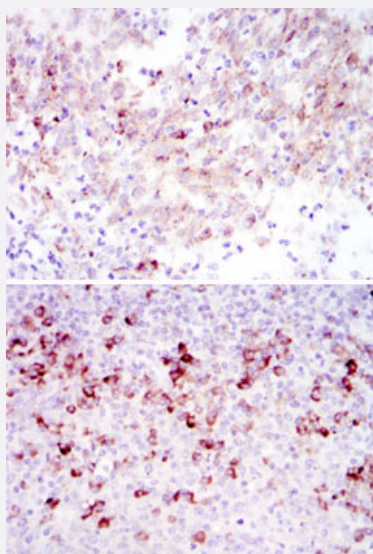
Catalog # MAB10620 Size 100 uL

Applications



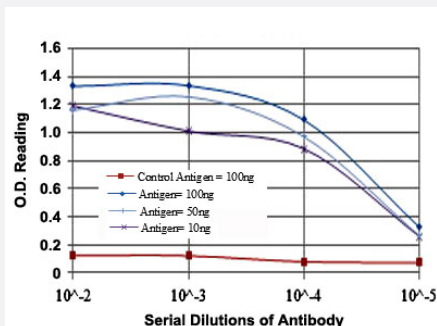
Western Blot (Cell lysate)

Western blot analysis using CTTN monoclonal antibody, clone 4C6 (Cat # MAB10620) against HeLa (1) , A-431 (2) , MCF-7 (3) , SR-BR-3 (4) , HepG2 (5) and NIH/3T3 (6) cell lysate.



Immunohistochemistry (Formalin/PFA-fixed paraffin-embedded sections)

Immunohistochemical analysis of paraffin-embedded human cervical cancer tissues (upper) and tonsil tissues (bottom) using CTTN monoclonal antibody, clone 4C6 (Cat # MAB10620) with DAB staining.



Enzyme-linked Immunoabsorbent Assay

ELISA measurement of CTTN monoclonal antibody, clone 4C6 (Cat # MAB10620) .

Specification

Product Description	Mouse monoclonal antibody raised against partial recombinant CTTN.
Immunogen	Recombinant protein corresponding to human CTTN.
Host	Mouse
Theoretical MW (kDa)	80
Reactivity	Human, Mouse
Form	Liquid
Isotype	IgG1
Recommend Usage	ELISA (1:10000) Western Blot (1:500-1:2000) Immunohistochemistry (1:200-1:1000) The optimal working dilution should be determined by the end user.
Storage Buffer	In ascites (0.03% sodium azide)
Storage Instruction	Store at 4°C. For long term storage store at -20°C. Aliquot to avoid repeated freezing and thawing.
Note	This product contains sodium azide: a POISONOUS AND HAZARDOUS SUBSTANCE which should be handled by trained staff only.

Applications

- Western Blot (Cell lysate)

Western blot analysis using CTTN monoclonal antibody, clone 4C6 (Cat # MAB10620) against HeLa (1) , A-431 (2) , MCF-7 (3) , SR-BR-3 (4) , HepG2 (5) and NIH/3T3 (6) cell lysate.

- Immunohistochemistry (Formalin/PFA-fixed paraffin-embedded sections)

Immunohistochemical analysis of paraffin-embedded human cervical cancer tissues (upper) and tonsil tissues (bottom) using CTTN monoclonal antibody, clone 4C6 (Cat # MAB10620) with DAB staining.

- Enzyme-linked Immunoabsorbent Assay

ELISA measurement of CTTN monoclonal antibody, clone 4C6 (Cat # MAB10620) .

Gene Info — CTTN

Entrez GeneID [2017](#)

Gene Name CTTN

Gene Alias EMS1, FLJ34459

Gene Description cortactin

Omim ID [164765](#)

Gene Ontology [Hyperlink](#)

Gene Summary This gene is overexpressed in breast cancer and squamous cell carcinomas of the head and neck. The encoded protein is localized in the cytoplasm and in areas of the cell-substratum contacts. This gene has two roles: (1) regulating the interactions between components of adherens-type junctions and (2) organizing the cytoskeleton and cell adhesion structures of epithelia and carcinoma cells. During apoptosis, the encoded protein is degraded in a caspase-dependent manner. The aberrant regulation of this gene contributes to tumor cell invasion and metastasis. Two splice variants that encode different isoforms have been identified for this gene. [provided by RefSeq]

Other Designations 1110020L01Rik|ems1 sequence (mammary tumor and squamous cell carcinoma-associated (p80/85 src substrate)|oncogene EMS1

Pathway

- [Pathogenic Escherichia coli infection - EHEC](#)
- [Tight junction](#)

Disease

- [Asthma](#)
- [Genetic Predisposition to Disease](#)