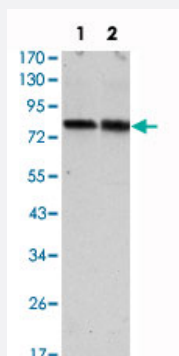


# CRTC2 monoclonal antibody, clone 5B10

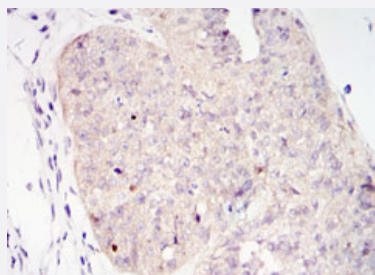
Catalog # MAB10615      Size 100 uL

## Applications



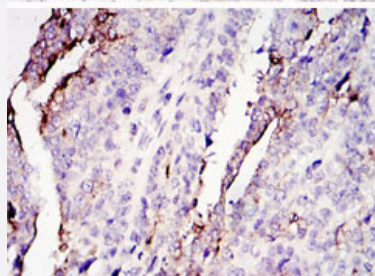
### Western Blot (Cell lysate)

Western blot analysis using CRTC2 monoclonal antibody, clone 5B10 (Cat # MAB10615) against HeLa (1) and HEK293 (2) cell lysate.



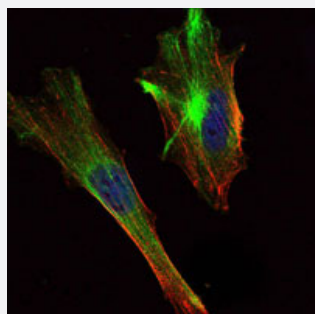
### Immunohistochemistry (Formalin/PFA-fixed paraffin-embedded sections)

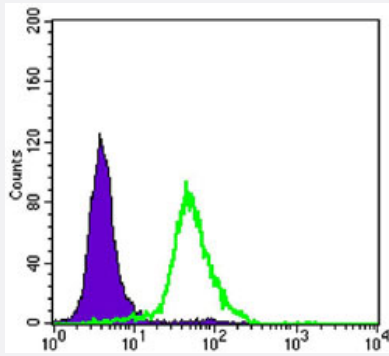
Immunohistochemical analysis of paraffin-embedded human ovary tumour tissues (upper) and lung cancer (bottom) using CRTC2 monoclonal antibody, clone 5B10 (Cat # MAB10615) with DAB staining.



### Immunofluorescence

Immunofluorescence analysis of HeLa cells using CRTC2 monoclonal antibody, clone 5B10 (Cat # MAB10615) (green) . Blue: DRAQ5 fluorescent DNA dye. Red: Actin filaments have been labeled with Alexa Fluor-555 phalloidin.





## Flow Cytometry

Flow cytometric analysis of HeLa cells using CRTC2 monoclonal antibody, clone 5B10 (Cat # MAB10615) (green) and negative control (purple).

## Specification

Product Description	Mouse monoclonal antibody raised against partial recombinant CRTC2.
Immunogen	Recombinant protein corresponding to human CRTC2.
Host	Mouse
Theoretical MW (kDa)	80
Reactivity	Human, Monkey
Form	Liquid
Isotype	IgG1
Recommend Usage	ELISA (1:10000) Western Blot (1:500-1:2000) Immunohistochemistry (1:200-1:1000) Immunofluorescence (1:200-1:1000) Flow cytometry (1:200-1:400) The optimal working dilution should be determined by the end user.
Storage Buffer	In ascites (0.03% sodium azide)
Storage Instruction	Store at 4°C. For long term storage store at -20°C. Aliquot to avoid repeated freezing and thawing.
Note	This product contains sodium azide: a POISONOUS AND HAZARDOUS SUBSTANCE which should be handled by trained staff only.

## Applications

- Western Blot (Cell lysate)

Western blot analysis using CRTC2 monoclonal antibody, clone 5B10 (Cat # MAB10615) against HeLa (1) and HEK293 (2) cell lysate.

- Immunohistochemistry (Formalin/PFA-fixed paraffin-embedded sections)

Immunohistochemical analysis of paraffin-embedded human ovary tumour tissues (upper) and lung cancer (bottom) using CRTC2 monoclonal antibody, clone 5B10 (Cat # MAB10615) with DAB staining.

- Immunofluorescence

Immunofluorescence analysis of HeLa cells using CRTC2 monoclonal antibody, clone 5B10 (Cat # MAB10615) (green) . Blue: DRAQ5 fluorescent DNA dye. Red: Actin filaments have been labeled with Alexa Fluor-555 phalloidin.

- Enzyme-linked Immunoabsorbent Assay

- Flow Cytometry

Flow cytometric analysis of HeLa cells using CRTC2 monoclonal antibody, clone 5B10 (Cat # MAB10615) (green) and negative control (purple).

## Gene Info — CRTC2

Entrez GeneID	<a href="#">200186</a>
---------------	------------------------

Gene Name	CRTC2
-----------	-------

Gene Alias	RP11-422P24.6, TORC2
------------	----------------------

Gene Description	CREB regulated transcription coactivator 2
------------------	--

Omim ID	<a href="#">608972</a>
---------	------------------------

Gene Ontology	<a href="#">Hyperlink</a>
---------------	---------------------------

Other Designations	transducer of regulated cAMP response element-binding protein (CREB) 2
--------------------	--

## Disease

- [Diabetes Mellitus](#)

- [Disease Progression](#)

- [Disease Susceptibility](#)

- [Genetic Predisposition to Disease](#)

- [HIV Infections](#)