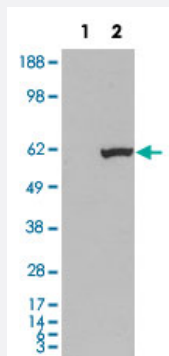


ETV1 monoclonal antibody, clone 1C8B6

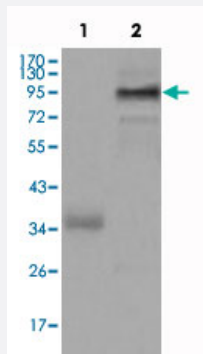
Catalog # MAB10589 Size 100 uL

Applications



Western Blot (Transfected lysate)

Western blot analysis using ETV1 monoclonal antibody, clone 1C8B6 (Cat # MAB10589) against HEK293T cells transfected with the pCMV6-ENTRY control (1) and pCMV6-ENTRY ETV1 cDNA (2) .



Western Blot

Western blot analysis using ETV1 monoclonal antibody, clone 1C8B6 (Cat # MAB10589) against truncated Trx-ETV1 recombinant protein (1) and full-length ETV1 (aa 1-477) -hlgGfc transfected CHO-K1 cell lysate (2) .

Specification

| | |
|----------------------------|---|
| Product Description | Mouse monoclonal antibody raised against partial recombinant ETV1. |
| Immunogen | Recombinant protein corresponding to amino acids 1-191 of human ETV1. |
| Host | Mouse |
| Reactivity | Human |
| Form | Liquid |
| Isotype | IgG1 |

| | |
|----------------------------|--|
| Recommend Usage | ELISA (1:10000) Western Blot (1:500-1:2000) The optimal working dilution should be determined by the end user. |
| Storage Buffer | In ascites (0.03% sodium azide) |
| Storage Instruction | Store at 4°C. For long term storage store at -20°C. Aliquot to avoid repeated freezing and thawing. |
| Note | This product contains sodium azide: a POISONOUS AND HAZARDOUS SUBSTANCE which should be handled by trained staff only. |

Applications

- Western Blot (Transfected lysate)

Western blot analysis using ETV1 monoclonal antibody, clone 1C8B6 (Cat # MAB10589) against HEK293T cells transfected with the pCMV6-ENTRY control (1) and pCMV6-ENTRY ETV1 cDNA (2) .

- Western Blot

Western blot analysis using ETV1 monoclonal antibody, clone 1C8B6 (Cat # MAB10589) against truncated Trx-ETV1 recombinant protein (1) and full-length ETV1 (aa 1-477) -hlgGfc transfected CHO-K1 cell lysate (2) .

- Enzyme-linked Immunoabsorbent Assay

Gene Info — ETV1

| | |
|---------------------------|--|
| Entrez GeneID | 2115 |
| Gene Name | ETV1 |
| Gene Alias | DKFZp781L0674, ER81, MGC104699, MGC120533, MGC120534 |
| Gene Description | ets variant 1 |
| Omim ID | 600541 |
| Gene Ontology | Hyperlink |
| Other Designations | ets variant gene 1 |

Disease

- [Adenocarcinoma](#)
- [Prostate cancer](#)
- [Prostatic Neoplasms](#)