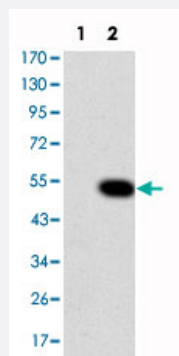


# CRK monoclonal antibody, clone 3G11C1

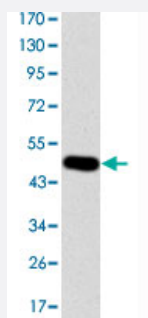
Catalog # MAB10572 Size 100 uL

## Applications



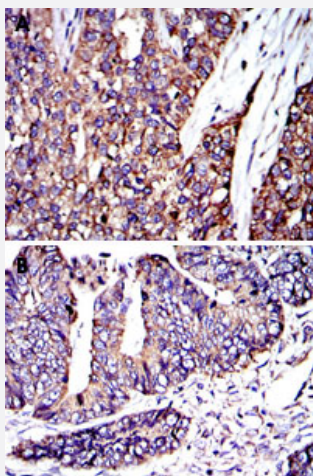
### Western Blot (Transfected lysate)

Western blot analysis using CRK monoclonal antibody, clone 3G11C1 (Cat # MAB10572) against HEK293 (1) and CRK-hlgGfC transfected HEK293 (2) cell lysate.



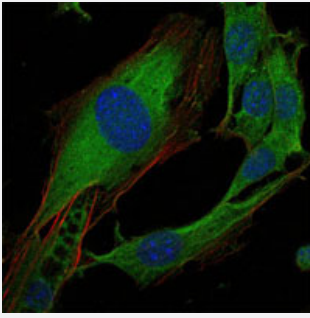
### Western Blot (Recombinant protein)

Western blot analysis using CRK monoclonal antibody, clone 3G11C1 (Cat # MAB10572) against recombinant protein.



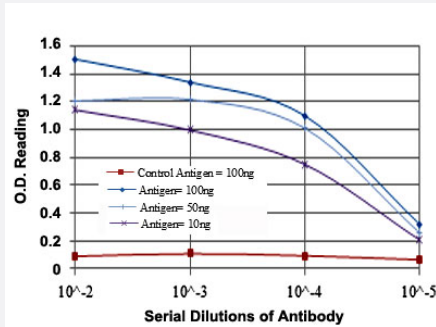
### Immunohistochemistry (Formalin/PFA-fixed paraffin-embedded sections)

Immunohistochemical analysis of paraffin-embedded human bladder cancer (A) and human rectum cancer (B) tissues using CRK monoclonal antibody, clone 3G11C1 (Cat # MAB10572) with DAB staining.



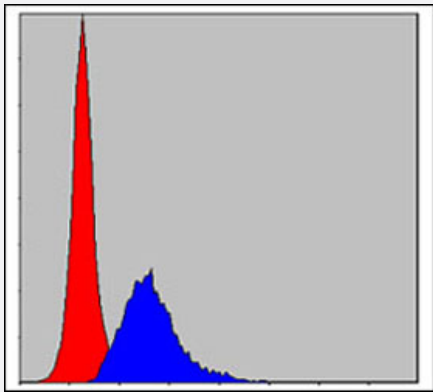
## Immunofluorescence

Immunofluorescence analysis of 3T3-L1 cells using CRK monoclonal antibody, clone 3G11C1 (Cat # MAB10572) (green). Blue: DRAQ5 fluorescent DNA dye. Red: Actin filaments have been labeled with Alexa Fluor-555 phalloidin.



## Enzyme-linked Immunoabsorbent Assay

ELISA detection with CRK monoclonal antibody, clone 3G11C1 (Cat # MAB10572).



## Flow Cytometry

Flow cytometric analysis of MCF-7 cells using CRK monoclonal antibody, clone 3G11C1 (Cat # MAB10572) (blue) and negative control (red).

## Specification

Product Description	Mouse monoclonal antibody raised against partial recombinant CRK.
Immunogen	Recombinant protein corresponding to human CRK.
Host	Mouse
Reactivity	Human
Form	Liquid
Isotype	IgG2b

<b>Recommend Usage</b>	ELISA (1:10000) Western Blot (1:500-1:2000) Immunohistochemistry (1:200-1:1000) Immunofluorescence (1:200-1:1000) Flow cytometry (1:200-1:400) The optimal working dilution should be determined by the end user.
<b>Storage Buffer</b>	In ascites (0.03% sodium azide)
<b>Storage Instruction</b>	Store at 4°C. For long term storage store at -20°C. Aliquot to avoid repeated freezing and thawing.
<b>Note</b>	This product contains sodium azide: a POISONOUS AND HAZARDOUS SUBSTANCE which should be handled by trained staff only.

## Applications

- Western Blot (Transfected lysate)

Western blot analysis using CRK monoclonal antibody, clone 3G11C1 (Cat # MAB10572) against HEK293 (1) and CRK-hlgGfC transfected HEK293 (2) cell lysate.

- Western Blot (Recombinant protein)

Western blot analysis using CRK monoclonal antibody, clone 3G11C1 (Cat # MAB10572) against recombinant protein.

- Immunohistochemistry (Formalin/PFA-fixed paraffin-embedded sections)

Immunohistochemical analysis of paraffin-embedded human bladder cancer (A) and human rectum cancer (B) tissues using CRK monoclonal antibody, clone 3G11C1 (Cat # MAB10572) with DAB staining.

- Immunofluorescence

Immunofluorescence analysis of 3T3-L1 cells using CRK monoclonal antibody, clone 3G11C1 (Cat # MAB10572) (green). Blue: DRAQ5 fluorescent DNA dye. Red: Actin filaments have been labeled with Alexa Fluor-555 phalloidin.

- Enzyme-linked Immunoabsorbent Assay

ELISA detection with CRK monoclonal antibody, clone 3G11C1 (Cat # MAB10572).

- Flow Cytometry

Flow cytometric analysis of MCF-7 cells using CRK monoclonal antibody, clone 3G11C1 (Cat # MAB10572) (blue) and negative control (red).

## Gene Info — CRK

Entrez GeneID

[1398](#)

Gene Name	CRK
Gene Alias	CRKII
Gene Description	v-crk sarcoma virus CT10 oncogene homolog (avian)
Omim ID	<a href="#">164762</a>
Gene Ontology	<a href="#">Hyperlink</a>
Gene Summary	This gene encodes a member of an adapter protein family that binds to several tyrosine-phosphorylated proteins. The product of this gene has several SH2 and SH3 domains (src-homology domains) and is involved in several signaling pathways, recruiting cytoplasmic proteins in the vicinity of tyrosine kinase through SH2-phosphotyrosine interaction. The N-terminal SH2 domain of this protein functions as a positive regulator of transformation whereas the C-terminal SH3 domain functions as a negative regulator of transformation. Two alternative transcripts encoding different isoforms with distinct biological activity have been described. [provided by RefSeq]
Other Designations	avian sarcoma virus CT10 (v-crk) oncogene homolog v-crk avian sarcoma virus CT10 oncogene homolog v-crk sarcoma virus CT10 oncogene homolog

## Pathway

- [Chemokine signaling pathway](#)
- [Chronic myeloid leukemia](#)
- [ErbB signaling pathway](#)
- [Fc gamma R-mediated phagocytosis](#)
- [Focal adhesion](#)
- [Insulin signaling pathway](#)
- [MAPK signaling pathway](#)
- [Neurotrophin signaling pathway](#)
- [Pathways in cancer](#)
- [Regulation of actin cytoskeleton](#)
- [Renal cell carcinoma](#)