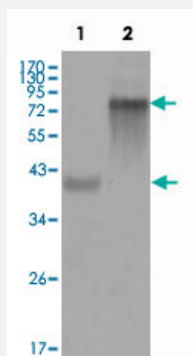


KRT19 monoclonal antibody, clone 4F12G9

Catalog # MAB10566 Size 100 uL

Applications



Western Blot

Western blot analysis using KRT19 monoclonal antibody, clone 4F12G9 (Cat # MAB10566) against truncated KRT19-His recombinant protein (1) and full-length KRT19(aa 1-400)-hlgGfc transfected CHO-K1 cell lysate(2).

Specification

Product Description	Mouse monoclonal antibody raised against partial recombinant KRT19.
Immunogen	Recombinant protein corresponding to amino acids 80-400 of human KRT19.
Host	Mouse
Reactivity	Human
Form	Liquid
Isotype	IgG1
Recommend Usage	ELISA (1:10000) Western Blot (1:500-1:2000) The optimal working dilution should be determined by the end user.
Storage Buffer	In ascites (0.03% sodium azide)
Storage Instruction	Store at 4°C. For long term storage store at -20°C. Aliquot to avoid repeated freezing and thawing.

Note

This product contains sodium azide: a POISONOUS AND HAZARDOUS SUBSTANCE which should be handled by trained staff only.

Applications

- Western Blot

Western blot analysis using KRT19 monoclonal antibody, clone 4F12G9 (Cat # MAB10566) against truncated KRT19-His recombinant protein (1) and full-length KRT19(aa 1-400)-hlgGFc transfected CHO-K1 cell lysate(2).

- Enzyme-linked Immunoabsorbent Assay

Gene Info — KRT19

Entrez GeneID	3880
Gene Name	KRT19
Gene Alias	CK19, K19, K1CS, MGC15366
Gene Description	keratin 19
Omim ID	148020
Gene Ontology	Hyperlink
Gene Summary	<p>The protein encoded by this gene is a member of the keratin family. The keratins are intermediate filament proteins responsible for the structural integrity of epithelial cells and are subdivided into cytokeratins and hair keratins. The type I cytokeratins consist of acidic proteins which are arranged in pairs of heterotypic keratin chains. Unlike its related family members, this smallest known acidic cytokeratin is not paired with a basic cytokeratin in epithelial cells. It is specifically expressed in the periderm, the transiently superficial layer that envelopes the developing epidermis. The type I cytokeratins are clustered in a region of chromosome 17q12-q21. [provided by RefSeq]</p>
Other Designations	40-kDa keratin intermediate filament cytokeratin 19 keratin, type I cytoskeletal 19 keratin, type I, 40-kd

Disease

- [Liver Cirrhosis](#)