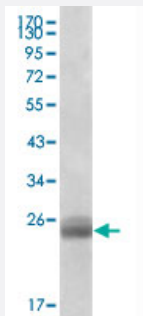


FBLN5 monoclonal antibody, clone 1G6A4

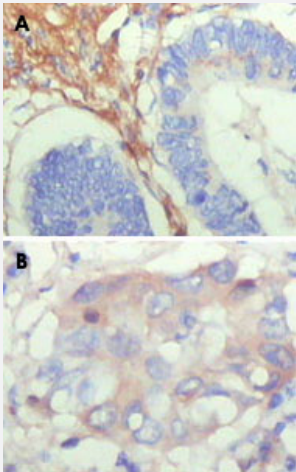
Catalog # MAB10560 Size 100 uL

Applications



Western Blot (Recombinant protein)

Western blot analysis using FBLN5 monoclonal antibody, clone 1G6A4 (Cat # MAB10560) against truncated FBLN5-His recombinant protein.



Immunohistochemistry (Formalin/PFA-fixed paraffin-embedded sections)

Immunohistochemical analysis of paraffin-embedded human colon cancer (A) and breast cancer (B) showing cytoplasmic localization with DAB staining using FBLN5 monoclonal antibody, clone 1G6A4 (Cat # MAB10560).

Specification

Product Description	Mouse monoclonal antibody raised against partial recombinant FBLN5.
Immunogen	Recombinant protein corresponding to amino acids 242-448 of human FBLN5.
Host	Mouse
Reactivity	Human
Form	Liquid

Isotype	IgG1
Recommend Usage	ELISA (1:10000) Western Blot (1:500-1:2000) Immunohistochemistry (1:200-1:1000) The optimal working dilution should be determined by the end user.
Storage Buffer	In ascites (0.03% sodium azide)
Storage Instruction	Store at 4°C. For long term storage store at -20°C. Aliquot to avoid repeated freezing and thawing.
Note	This product contains sodium azide: a POISONOUS AND HAZARDOUS SUBSTANCE which should be handled by trained staff only.

Applications

- Western Blot (Recombinant protein)

Western blot analysis using FBLN5 monoclonal antibody, clone 1G6A4 (Cat # MAB10560) against truncated FBLN5-His recombinant protein.

- Immunohistochemistry (Formalin/PFA-fixed paraffin-embedded sections)

Immunohistochemical analysis of paraffin-embedded human colon cancer (A) and breast cancer (B) showing cytoplasmic localization with DAB staining using FBLN5 monoclonal antibody, clone 1G6A4 (Cat # MAB10560).

- Enzyme-linked Immunoabsorbent Assay

Gene Info — FBLN5

Entrez GeneID	10516
Gene Name	FBLN5
Gene Alias	ARMD3, DANCE, EVEC, FIBL-5, FLJ90059, UP50
Gene Description	fibulin 5
Omim ID	123700 219100 604580 608895
Gene Ontology	Hyperlink

Gene Summary

The protein encoded by this gene is a secreted, extracellular matrix protein containing an Arg-Gly-Asp (RGD) motif and calcium-binding EGF-like domains. It promotes adhesion of endothelial cells through interaction of integrins and the RGD motif. It is prominently expressed in developing arteries but less so in adult vessels. However, its expression is reinduced in balloon-injured vessels and atherosclerotic lesions, notably in intimal vascular smooth muscle cells and endothelial cells. Therefore, the protein encoded by this gene may play a role in vascular development and remodeling. Defects in this gene are a cause of autosomal dominant cutis laxa, autosomal recessive cutis laxa type I (CL type I), and age-related macular degeneration type 3 (ARMD3). [provided by RefSeq]

Other Designations

developmental arteries and neural crest epidermal growth factor-like|urine p50 protein

Disease

- [Aortic Aneurysm](#)
- [Atherosclerosis](#)
- [Calcinosis](#)
- [Coronary Artery Disease](#)
- [Diabetes Mellitus](#)
- [Disease Progression](#)
- [Genetic Predisposition to Disease](#)
- [Macular Degeneration](#)
- [Tobacco Use Disorder](#)
- [Vision](#)