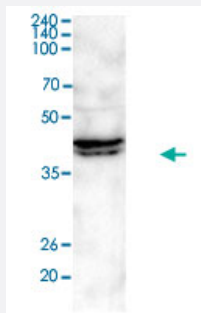


RASSF1 monoclonal antibody, clone 3F3

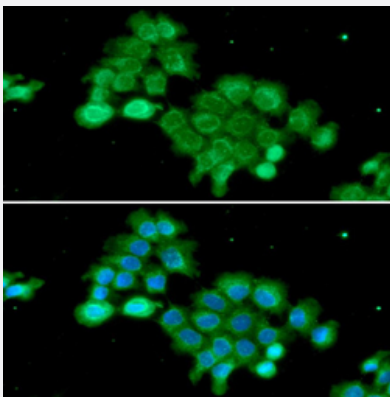
Catalog # MAB1056 Size 100 uL

Applications



Western Blot (Cell lysate)

Western blot analysis of HeLa cells.



Immunocytochemistry

Immunocytochemistry of A431 cells. The cell was stained with RASSF1 monoclonal antibody, clone 3F3 (1:100). The secondary antibody (green) was used Alexa Fluor 488. DAPI was stained the cell nucleus (blue)

Specification

Product Description	Mouse monoclonal antibody raised against partial recombinant RASSF1.
Immunogen	Recombinant protein corresponding to amino acids 1-340 of human RASSF1.
Host	Mouse
Reactivity	Human
Form	Liquid
Purification	Protein A affinity chromatography

Isotype	IgG1, kappa
Recommend Usage	ELISA Immunocytochemistry (1:100) Immunofluorescence (1:100) Western Blot (1:1000) The optimal working dilution should be determined by the end user.
Storage Buffer	In PBS, pH 7.4 (10% glycerol, 0.02% sodium azide).
Storage Instruction	Store at 2°C to 8°C for 1 week. For long term storage, aliquot and store at -20°C to -80°C. Aliquot to avoid repeated freezing and thawing.
Note	This product contains sodium azide: a POISONOUS AND HAZARDOUS SUBSTANCE which should be handled by trained staff only.

Applications

- Western Blot (Cell lysate)

Western blot analysis of HeLa cells.

- Immunocytochemistry

Immunocytochemistry of A431 cells. The cell was stained with RASSF1 monoclonal antibody, clone 3F3 (1:100). The secondary antibody (green) was used Alexa Fluor 488. DAPI was stained the cell nucleus (blue)

- Enzyme-linked Immunoabsorbent Assay

Gene Info — RASSF1

Entrez GeneID	11186
Protein Accession#	Q9NS23
Gene Name	RASSF1
Gene Alias	123F2, NORE2A, RASSF1A, RDA32, REH3P21
Gene Description	Ras association (RalGDS/AF-6) domain family member 1
Omim ID	211980 605082
Gene Ontology	Hyperlink

Gene Summary

This gene encodes a protein similar to the RAS effector proteins. Loss or altered expression of this gene has been associated with the pathogenesis of a variety of cancers, which suggests the tumor suppressor function of this gene. The inactivation of this gene was found to be correlated with the hypermethylation of its CpG-island promoter region. The encoded protein was found to interact with DNA repair protein XPA. The protein was also shown to inhibit the accumulation of cyclin D 1, and thus induce cell cycle arrest. Seven alternatively spliced transcript variants of this gene encoding distinct isoforms have been reported. [provided by RefSeq]

Other Designations

OTTHUMP00000195503|Ras association (RalGDS/AF-6) domain family 1|Ras association domain family 1|Ras association domain family protein 1|WUGSC:H_LUCA12.5|cardiac-specific ras association domain family 1 protein|pancreas-specific ras association domain fam

Publication Reference

- [Hypermethylation of RASSF1A in human and rhesus placentas.](#)

Chiu RW, Chim SS, Wong IH, Wong CS, Lee WS, To KF, Tong JH, Yuen RK, Shum AS, Chan JK, Chan LY, Yuen JW, Tong YK, Weier JF, Ferlatte C, Leung TN, Lau TK, Lo KW, Lo YM.

The American Journal of Pathology 2007 Mar; 170(3):941.

Application: IHC-P, Human, first trimester placental tissues

- [Chromatin inactivation precedes de novo DNA methylation during the progressive epigenetic silencing of the RASSF1A promoter.](#)

Strunnikova M, Schagdarsurengin U, Kehlen A, Garbe JC, Stampfer MR, Dammann R.

Molecular and Cellular Biology 2005 May; 25(10):3923.

- [The tumor suppressor RASSF1A in human carcinogenesis: an update.](#)

Dammann R, Schagdarsurengin U, Seidel C, Strunnikova M, Rastetter M, Baier K, Pfeifer GP.

Histology and Histopathology 2005 Apr; 20(2):645.

Application: IHC, WB, Human, Human cancers, Mammalian cells

Pathway

- [Bladder cancer](#)
- [Non-small cell lung cancer](#)
- [Pathways in cancer](#)

Disease

- [Adenocarcinoma](#)
- [Breast cancer](#)
- [Breast Neoplasms](#)
- [Carcinoma](#)
- [Colorectal Neoplasms](#)
- [Esophageal Neoplasms](#)
- [Fibroadenoma](#)
- [Genetic Predisposition to Disease](#)
- [Head and Neck Neoplasms](#)
- [Lung Neoplasms](#)