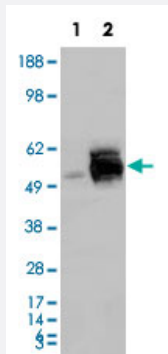


FRK monoclonal antibody, clone 1A8H2C12

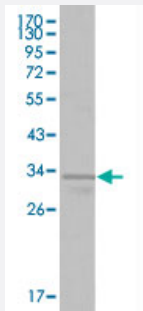
Catalog # MAB10559 Size 100 uL

Applications



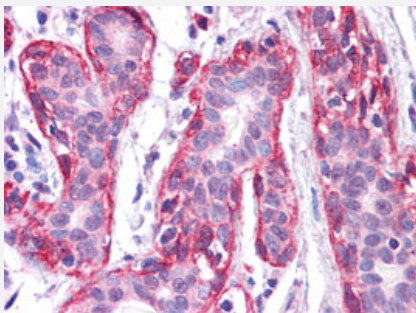
Western Blot (Transfected lysate)

Western blot analysis using FRK monoclonal antibody, clone 1A8H2C12 (Cat # MAB10559) against HEK293T cells transfected with the pCMV6-ENTRY control (1) and pCMV6-ENTRY FRK cDNA (2).



Western Blot (Recombinant protein)

Western blot analysis using FRK monoclonal antibody, clone 1A8H2C12 (Cat # MAB10559) against truncated FRK-His recombinant protein (1).



Immunohistochemistry (Formalin/PFA-fixed paraffin-embedded sections)

Immunohistochemical analysis of paraffin-embedded human breast tissues using FRK monoclonal antibody, clone 1A8H2C12 (Cat # MAB10559).

Specification

Product Description

Mouse monoclonal antibody raised against partial recombinant FRK.

Immunogen	Recombinant protein corresponding to amino acids 2-300 of human FRK.
Host	Mouse
Reactivity	Human
Form	Liquid
Isotype	IgG1
Recommend Usage	ELISA (1:10000) Western Blot (1:500-1:2000) Immunohistochemistry (1:200-1:1000) The optimal working dilution should be determined by the end user.
Storage Buffer	In ascites (0.03% sodium azide)
Storage Instruction	Store at 4°C. For long term storage store at -20°C. Aliquot to avoid repeated freezing and thawing.
Note	This product contains sodium azide: a POISONOUS AND HAZARDOUS SUBSTANCE which should be handled by trained staff only.

Applications

- Western Blot (Transfected lysate)

Western blot analysis using FRK monoclonal antibody, clone 1A8H2C12 (Cat # MAB10559) against HEK293T cells transfected with the pCMV6-ENTRY control (1) and pCMV6-ENTRY FRK cDNA (2).

- Western Blot (Recombinant protein)

Western blot analysis using FRK monoclonal antibody, clone 1A8H2C12 (Cat # MAB10559) against truncated FRK-His recombinant protein (1).

- Immunohistochemistry (Formalin/PFA-fixed paraffin-embedded sections)

Immunohistochemical analysis of paraffin-embedded human breast tissues using FRK monoclonal antibody, clone 1A8H2C12 (Cat # MAB10559).

- Enzyme-linked Immunoabsorbent Assay

Gene Info — FRK

Entrez GeneID [2444](#)

Gene Name FRK

Gene Alias	GTK, PTK5, RAK
Gene Description	fyn-related kinase
Omim ID	606573
Gene Ontology	Hyperlink
Gene Summary	The protein encoded by this gene belongs to the TYR family of protein kinases. This tyrosine kinase is a nuclear protein and may function during G1 and S phase of the cell cycle and suppress growth. [provided by RefSeq]
Other Designations	OTTHUMP00000017048 PTK5 protein tyrosine kinase 5 nuclear tyrosine protein kinase RAK tyrosine-protein kinase FRK

Disease

- [Alzheimer disease](#)
- [Cardiovascular Diseases](#)
- [Diabetes Complications](#)
- [Kidney Failure](#)
- [Metabolic Syndrome X](#)
- [Neoplasms](#)
- [Osteoporosis](#)
- [Schizophrenia](#)