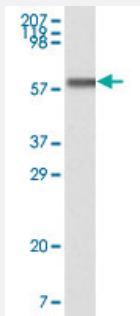


CSNK1A1 monoclonal antibody, clone 3C10F7

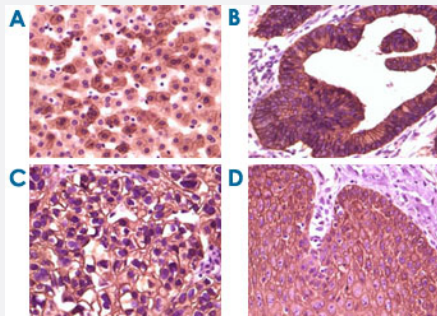
Catalog # MAB10556 Size 100 uL

Applications



Western Blot (Recombinant protein)

Western blot analysis using CSNK1A1 monoclonal antibody, clone 3C10F7 (Cat # MAB10556) against truncated CK1 recombinant protein.



Immunohistochemistry (Formalin/PFA-fixed paraffin-embedded sections)

Immunohistochemical analysis of paraffin-embedded human liver tissue (A), colon carcinoma (B), lung carcinoma (C) and esophagus tissue (D), showing membrane localization using CSNK1A1 monoclonal antibody, clone 3C10F7 (Cat # MAB10556) with DAB staining.

Specification

Product Description	Mouse monoclonal antibody raised against partial recombinant CSNK1A1.
Immunogen	Recombinant protein corresponding to human CSNK1A1.
Host	Mouse
Reactivity	Human
Form	Liquid
Isotype	IgG1

Recommend Usage	ELISA (1:10000) Western Blot (1:500-1:2000) Immunohistochemistry (1:200-1:1000) The optimal working dilution should be determined by the end user.
Storage Buffer	In ascites (0.03% sodium azide)
Storage Instruction	Store at 4°C. For long term storage store at -20°C. Aliquot to avoid repeated freezing and thawing.
Note	This product contains sodium azide: a POISONOUS AND HAZARDOUS SUBSTANCE which should be handled by trained staff only.

Applications

- Western Blot (Recombinant protein)

Western blot analysis using CSNK1A1 monoclonal antibody, clone 3C10F7 (Cat # MAB10556) against truncated CK1 recombinant protein.

- Immunohistochemistry (Formalin/PFA-fixed paraffin-embedded sections)

Immunohistochemical analysis of paraffin-embedded human liver tissue (A), colon carcinoma (B), lung carcinoma (C) and esophagus tissue (D), showing membrane localization using CSNK1A1 monoclonal antibody, clone 3C10F7 (Cat # MAB10556) with DAB staining.

- Enzyme-linked Immunoabsorbent Assay

Gene Info — CSNK1A1

Entrez GeneID	1452
Gene Name	CSNK1A1
Gene Alias	CK1, HLCDGP1, PRO2975
Gene Description	casein kinase 1, alpha 1
Omim ID	600505
Gene Ontology	Hyperlink
Gene Summary	O
Other Designations	down-regulated in lung cancer

Pathway

- [Hedgehog signaling pathway](#)
- [Wnt signaling pathway](#)

Disease

- [Cardiovascular Diseases](#)
- [Diabetes Mellitus](#)
- [Edema](#)