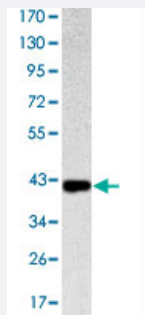


# KLRD1 monoclonal antibody, clone 1H1

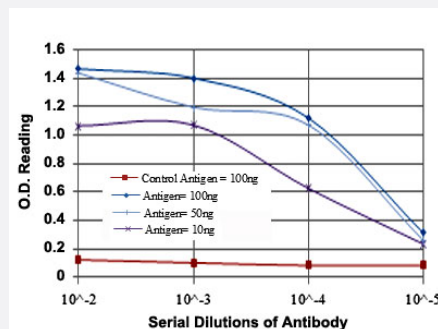
Catalog # MAB10543      Size 100 uL

## Applications



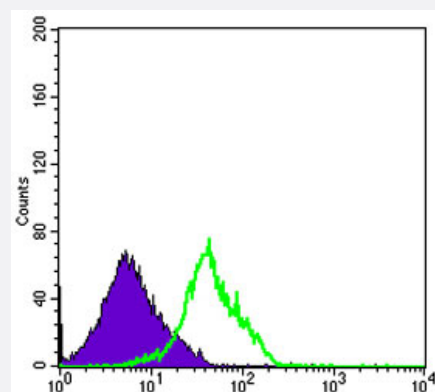
### Western Blot (Recombinant protein)

Western blot analysis using KLRD1 monoclonal antibody, clone 1H1 (Cat # MAB10543) against recombinant protein.



### Enzyme-linked Immunoabsorbent Assay

ELISA detection with KLRD1 monoclonal antibody, clone 1H1 (Cat # MAB10543).



### Flow Cytometry

Flow cytometric analysis of Raji cells using KLRD1 monoclonal antibody, clone 1H1 (Cat # MAB10543) (green) and negative control (purple).

## Specification

### Product Description

Mouse monoclonal antibody raised against partial recombinant KLRD1.

Immunogen	Recombinant protein corresponding to human KLRD1.
Host	Mouse
Theoretical MW (kDa)	21
Reactivity	Human
Form	Liquid
Isotype	IgG1
Recommend Usage	ELISA (1:10000) Western Blot (1:500-1:2000) Flow cytometry (1:200-1:400) The optimal working dilution should be determined by the end user.
Storage Buffer	In ascites (0.03% sodium azide)
Storage Instruction	Store at 4°C. For long term storage store at -20°C. Aliquot to avoid repeated freezing and thawing.
Note	This product contains sodium azide: a POISONOUS AND HAZARDOUS SUBSTANCE which should be handled by trained staff only.

## Applications

- Western Blot (Recombinant protein)

Western blot analysis using KLRD1 monoclonal antibody, clone 1H1 (Cat # MAB10543) against recombinant protein.

- Enzyme-linked Immunoabsorbent Assay

ELISA detection with KLRD1 monoclonal antibody, clone 1H1 (Cat # MAB10543).

- Flow Cytometry

Flow cytometric analysis of Raji cells using KLRD1 monoclonal antibody, clone 1H1 (Cat # MAB10543) (green) and negative control (purple).

## Gene Info — KLRD1

Entrez GeneID	<a href="#">3824</a>
Gene Name	KLRD1
Gene Alias	CD94

Gene Description	killer cell lectin-like receptor subfamily D, member 1
Omim ID	<a href="#">602894</a>
Gene Ontology	<a href="#">Hyperlink</a>
Gene Summary	Natural killer (NK) cells are a distinct lineage of lymphocytes that mediate cytotoxic activity and secrete cytokines upon immune stimulation. Several genes of the C-type lectin superfamily, including members of the NKG2 family, are expressed by NK cells and may be involved in the regulation of NK cell function. KLRD1 (CD94) is an antigen preferentially expressed on NK cells and is classified as a type II membrane protein because it has an external C terminus. Three transcript variants encoding two different isoforms have been found for this gene. [provided by RefSeq]
Other Designations	CD94 antigen

## Pathway

- [Antigen processing and presentation](#)
- [Graft-versus-host disease](#)
- [Natural killer cell mediated cytotoxicity](#)

## Disease

- [Arthritis](#)
- [Genetic Predisposition to Disease](#)
- [Hepatitis B](#)
- [Lupus Erythematosus](#)