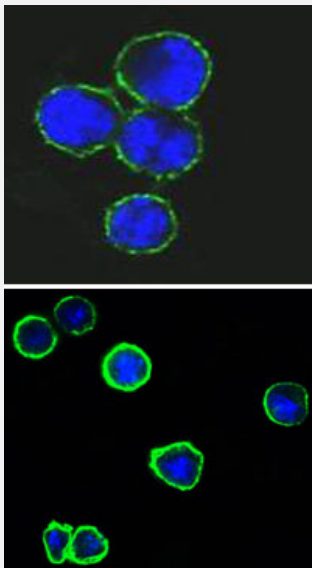


# CD37 monoclonal antibody, clone 2B8

Catalog # MAB10534      Size 100 uL

## Applications



### Immunofluorescence

Confocal immunofluorescence analysis of methanol-fixed BCBL-1 (upper) and L1210 (bottom) cells using CD37 monoclonal antibody, clone 2B8 (Cat # MAB10534)(green), showing membrane localization. Blue: DRAQ5 fluorescent DNA dye.

## Specification

<b>Product Description</b>	Mouse monoclonal antibody raised against partial recombinant CD37.
<b>Immunogen</b>	Recombinant protein corresponding to human CD37.
<b>Host</b>	Mouse
<b>Theoretical MW (kDa)</b>	31.7
<b>Reactivity</b>	Human, Mouse
<b>Form</b>	Liquid
<b>Isotype</b>	IgG1
<b>Recommend Usage</b>	ELISA (1:10000) Immunofluorescence (1:200-1:1000) The optimal working dilution should be determined by the end user.

<b>Storage Buffer</b>	In ascites (0.03% sodium azide)
<b>Storage Instruction</b>	Store at 4°C. For long term storage store at -20°C. Aliquot to avoid repeated freezing and thawing.
<b>Note</b>	This product contains sodium azide: a POISONOUS AND HAZARDOUS SUBSTANCE which should be handled by trained staff only.

## Applications

- Immunofluorescence

Confocal immunofluorescence analysis of methanol-fixed BCBL-1 (upper) and L1210 (bottom) cells using CD37 monoclonal antibody, clone 2B8 (Cat # MAB10534)(green), showing membrane localization. Blue: DRAQ5 fluorescent DNA dye.

- Enzyme-linked Immunoabsorbent Assay

## Gene Info — CD37

<b>Entrez GeneID</b>	<a href="#">951</a>
<b>Gene Name</b>	CD37
<b>Gene Alias</b>	GP52-40, MGC120234, TSPAN26
<b>Gene Description</b>	CD37 molecule
<b>Omim ID</b>	<a href="#">151523</a>
<b>Gene Ontology</b>	<a href="#">Hyperlink</a>
<b>Gene Summary</b>	The protein encoded by this gene is a member of the transmembrane 4 superfamily, also known as the tetraspanin family. Most of these members are cell-surface proteins that are characterized by the presence of four hydrophobic domains. The proteins mediate signal transduction events that play a role in the regulation of cell development, activation, growth and motility. This encoded protein is a cell surface glycoprotein that is known to complex with integrins and other transmembrane 4 superfamily proteins. It may play a role in T-cell-B-cell interactions. Alternate splicing results in multiple transcript variants encoding different isoforms. [provided by RefSeq]
<b>Other Designations</b>	CD37 antigen cell differentiation antigen 37 leukocyte surface antigen CD37 tetraspanin-26

## Pathway

- [Hematopoietic cell lineage](#)

## Disease

- [Cardiovascular Diseases](#)
- [Diabetes Mellitus](#)
- [Edema](#)