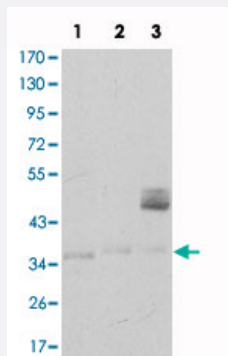


CD1A monoclonal antibody, clone 7A7

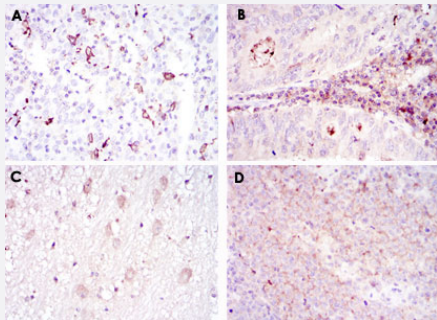
Catalog # MAB10529 Size 100 uL

Applications



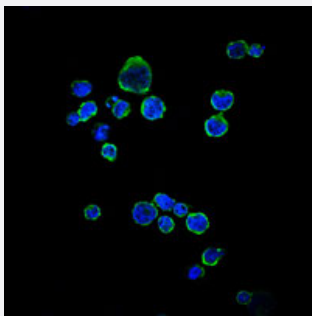
Western Blot (Cell lysate)

Western blot analysis using CD1A monoclonal antibody, clone 7A7 (Cat # MAB10529) against K-562 (1), Raji (2), and MOLT 4 (3) cell lysate.



Immunohistochemistry (Formalin/PFA-fixed paraffin-embedded sections)

Immunohistochemical analysis of paraffin-embedded human cervical cancer tissues (A), colon cancer tissues (B), brain tissues (C) and submaxillary tumor tissues (D) using CD1A monoclonal antibody, clone 7A7 (Cat # MAB10529) with DAB staining.

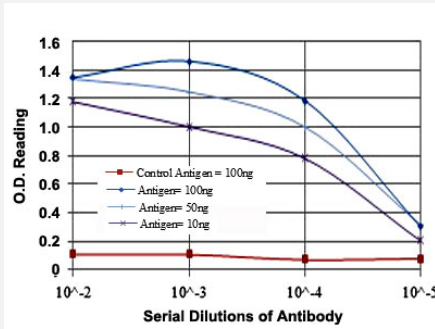


Immunofluorescence

Immunofluorescence analysis of Raji cells using CD1A monoclonal antibody, clone 7A7 (Cat # MAB10529) (green). Blue: DRAQ5 fluorescent DNA dye.

Enzyme-linked Immunoabsorbent Assay

ELISA detection with CD1A monoclonal antibody, clone 7A7 (Cat # MAB10529).



Specification

Product Description Mouse monoclonal antibody raised against partial recombinant CD1A.

Immunogen Recombinant protein corresponding to human CD1A.

Host Mouse

Theoretical MW (kDa) 37

Reactivity Human

Form Liquid

Isotype IgG1

Recommend Usage
 ELISA (1:10000)
 Western Blot (1:500-1:2000)
 Immunohistochemistry (1:200-1:1000)
 Immunofluorescence (1:200-1:1000)
 The optimal working dilution should be determined by the end user.

Storage Buffer In ascites (0.03% sodium azide)

Storage Instruction
 Store at 4°C. For long term storage store at -20°C.
 Aliquot to avoid repeated freezing and thawing.

Note This product contains sodium azide: a POISONOUS AND HAZARDOUS SUBSTANCE which should be handled by trained staff only.

Applications

- Western Blot (Cell lysate)

Western blot analysis using CD1A monoclonal antibody, clone 7A7 (Cat # MAB10529) against K-562 (1), Raji (2), and MOLT 4 (3) cell lysate.

- Immunohistochemistry (Formalin/PFA-fixed paraffin-embedded sections)

Immunohistochemical analysis of paraffin-embedded human cervical cancer tissues (A), colon cancer tissues (B), brain tissues (C) and submaxillary tumor tissues (D) using CD1A monoclonal antibody, clone 7A7 (Cat # MAB10529) with DAB staining.

- Immunofluorescence

Immunofluorescence analysis of Raji cells using CD1A monoclonal antibody, clone 7A7 (Cat # MAB10529) (green). Blue: DRAQ5 fluorescent DNA dye.

- Enzyme-linked Immunoabsorbent Assay

ELISA detection with CD1A monoclonal antibody, clone 7A7 (Cat # MAB10529).

Gene Info — CD1A

Entrez GeneID

[909](#)

Gene Name

CD1A

Gene Alias

CD1, FCB6, HTA1, R4, T6

Gene Description

CD1a molecule

Omim ID

[188370](#)

Gene Ontology

[Hyperlink](#)

Gene Summary

This gene encodes a member of the CD1 family of transmembrane glycoproteins, which are structurally related to the major histocompatibility complex (MHC) proteins and form heterodimers with beta-2-microglobulin. The CD1 proteins mediate the presentation of primarily lipid and glycolipid antigens of self or microbial origin to T cells. The human genome contains five CD1 family genes organized in a cluster on chromosome 1. The CD1 family members are thought to differ in their cellular localization and specificity for particular lipid ligands. The protein encoded by this gene localizes to the plasma membrane and to recycling vesicles of the early endocytic system. Alternatively spliced transcript variants have been observed, but their biological validity has not been determined. [provided by RefSeq]

Other Designations

CD1A antigen|CD1A antigen, a polypeptide|OTTHUMP00000018907|T-cell surface antigen T6/L eu-6|T-cell surface glycoprotein CD1a|cluster of differentiation 1 A|cortical thymocyte antigen CD1 A|differentiation antigen CD1-alpha-3|epidermal dendritic cell marker

Pathway

- [Hematopoietic cell lineage](#)

Disease

- [Campylobacter Infections](#)
- [Genetic Predisposition to Disease](#)
- [Guillain-Barre Syndrome](#)
- [Lung Diseases](#)
- [Mycobacterium Infections](#)
- [Polyradiculoneuropathy](#)