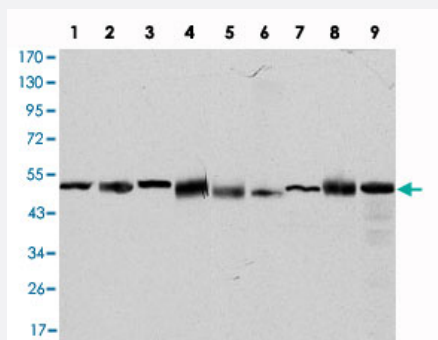


CCT2 monoclonal antibody, clone 5B5C4

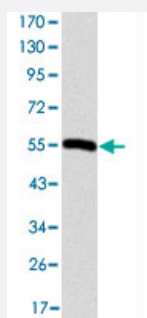
Catalog # MAB10523 Size 100 uL

Applications



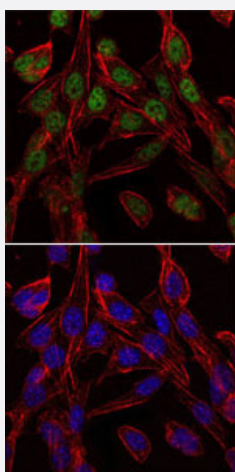
Western Blot (Cell lysate)

Western blot analysis using CCT2 monoclonal antibody, clone 5B5C4 (Cat # MAB10523) against HeLa (1), MCF-7 (2), Jurkat (3), T-47D (4), K-562 (5), A-431 (6), NIH/3T3 (7), PC-12 (8) and COS-7 (9) cell lysate.



Western Blot (Recombinant protein)

Western blot analysis using CCT2 monoclonal antibody, clone 5B5C4 (Cat # MAB10523) against recombinant protein.

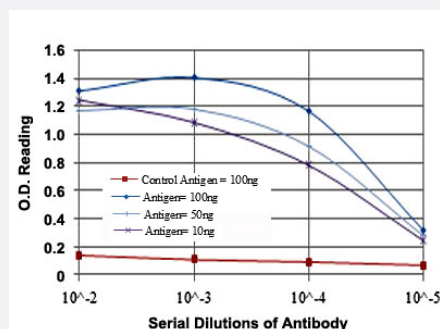


Immunofluorescence

Immunofluorescence analysis of 3T3-L1 cells using CCT2 monoclonal antibody, clone 5B5C4 (Cat # MAB10523) (green). Blue: DRAQ5 fluorescent DNA dye. Red: Actin filaments have been labeled with Alexa Fluor-555 phalloidin.

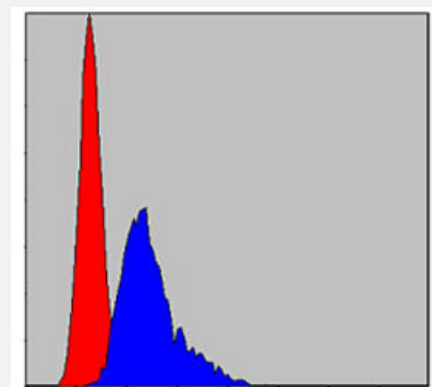
Enzyme-linked Immunoabsorbent Assay

ELISA detection with CCT2 monoclonal antibody, clone 5B5C4 (Cat # MAB10523).



Flow Cytometry

Flow cytometric analysis of NIH/3T3 cells using CCT2 monoclonal antibody, clone 5B5C4 (Cat # MAB10523) (blue) and negative control (red).



Specification

Product Description Mouse monoclonal antibody raised against partial recombinant CCT2.

Immunogen Recombinant protein corresponding to human CCT2.

Host Mouse

Theoretical MW (kDa) 54

Reactivity Human, Monkey, Mouse, Rat

Form Liquid

Isotype IgG1

Recommend Usage
 ELISA (1:10000)
 Western Blot (1:500-1:2000)
 Immunofluorescence (1:200-1:1000)
 Flow cytometry (1:200-1:400)
 The optimal working dilution should be determined by the end user.

Storage Buffer In ascites (0.03% sodium azide)

Storage Instruction
 Store at 4°C. For long term storage store at -20°C.
 Aliquot to avoid repeated freezing and thawing.

Note

This product contains sodium azide: a POISONOUS AND HAZARDOUS SUBSTANCE which should be handled by trained staff only.

Applications

- Western Blot (Cell lysate)

Western blot analysis using CCT2 monoclonal antibody, clone 5B5C4 (Cat # MAB10523) against HeLa (1), MCF-7 (2), Jurkat (3), T-47D (4), K-562 (5), A-431 (6), NIH/3T3 (7), PC-12 (8) and COS-7 (9) cell lysate.

- Western Blot (Recombinant protein)

Western blot analysis using CCT2 monoclonal antibody, clone 5B5C4 (Cat # MAB10523) against recombinant protein.

- Immunofluorescence

Immunofluorescence analysis of 3T3-L1 cells using CCT2 monoclonal antibody, clone 5B5C4 (Cat # MAB10523) (green). Blue: DRAQ5 fluorescent DNA dye. Red: Actin filaments have been labeled with Alexa Fluor-555 phalloidin.

- Enzyme-linked Immunoabsorbent Assay

ELISA detection with CCT2 monoclonal antibody, clone 5B5C4 (Cat # MAB10523).

- Flow Cytometry

Flow cytometric analysis of NIH/3T3 cells using CCT2 monoclonal antibody, clone 5B5C4 (Cat # MAB10523) (blue) and negative control (red).

Gene Info — CCT2

Entrez GeneID [10576](#)

Gene Name CCT2

Gene Alias 99D8.1, CCT-beta, CCTB, MGC142074, MGC142076, PRO1633, TCP-1-beta

Gene Description chaperonin containing TCP1, subunit 2 (beta)

Omim ID [605139](#)

Gene Ontology [Hyperlink](#)

Gene Summary

This gene encodes a molecular chaperone that is member of the chaperonin containing TCP1 complex (CCT), also known as the TCP1 ring complex (TRiC). This complex consists of two identical stacked rings, each containing eight different proteins. Unfolded polypeptides enter the central cavity of the complex and are folded in an ATP-dependent manner. The complex folds various proteins, including actin and tubulin. Alternate transcriptional splice variants of the gene described in this record have been observed but have not been thoroughly characterized. [provided by RefSeq]

Other Designations

T-complex protein 1 subunit beta|T-complex protein 1, beta subunit|chaperonin containing TCP1, subunit 2|chaperonin containing t-complex polypeptide 1, beta subunit|chaperonin containing t-complex polypeptide 1, subunit 2

Disease

- [Cerebral Hemorrhage](#)
- [Genetic Predisposition to Disease](#)
- [Hypertension](#)
- [Intracranial Hemorrhages](#)
- [Stroke](#)
- [Subarachnoid Hemorrhage](#)