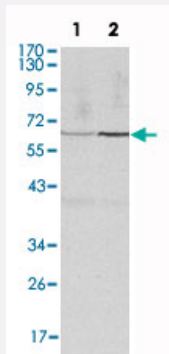


CCNB1 monoclonal antibody, clone 5G6

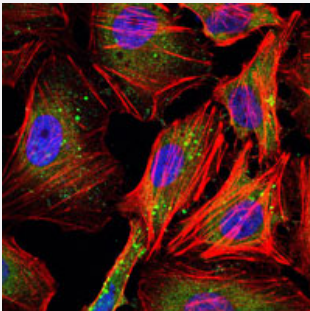
Catalog # MAB10520 Size 100 uL

Applications



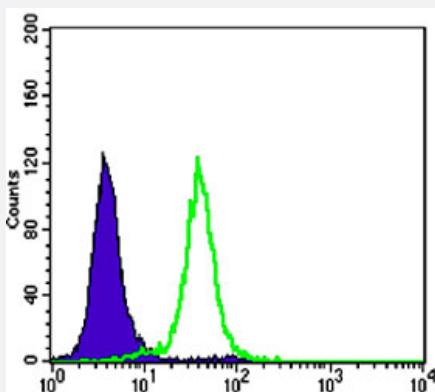
Western Blot (Cell lysate)

Western blot analysis using CCNB1 monoclonal antibody, clone 5G6 (Cat # MAB10520) against HeLa (1) and PC-12 (2) cell lysate.



Immunofluorescence

Immunofluorescence analysis of HeLa cells using CCNB1 monoclonal antibody, clone 5G6 (Cat # MAB10520) (green). Blue: DRAQ5 fluorescent DNA dye. Red: Actin filaments have been labeled with Alexa Fluor-555 phalloidin.



Flow Cytometry

Flow cytometric analysis of HeLa cells using CCNB1 monoclonal antibody, clone 5G6 (Cat # MAB10520) (green) and negative control (purple).

Specification

Product Description

Mouse monoclonal antibody raised against partial recombinant CCNB1.

Immunogen	Recombinant protein corresponding to human CCNB1.
Host	Mouse
Theoretical MW (kDa)	60
Reactivity	Human, Rat
Form	Liquid
Isotype	IgG1
Recommend Usage	ELISA (1:10000) Western Blot (1:500-1:2000) Immunofluorescence (1:200-1:1000) Flow cytometry (1:200-1:400) The optimal working dilution should be determined by the end user.
Storage Buffer	In ascites (0.03% sodium azide)
Storage Instruction	Store at 4°C. For long term storage store at -20°C. Aliquot to avoid repeated freezing and thawing.
Note	This product contains sodium azide: a POISONOUS AND HAZARDOUS SUBSTANCE which should be handled by trained staff only.

Applications

- Western Blot (Cell lysate)

Western blot analysis using CCNB1 monoclonal antibody, clone 5G6 (Cat # MAB10520) against HeLa (1) and PC-12 (2) cell lysate.

- Immunofluorescence

Immunofluorescence analysis of HeLa cells using CCNB1 monoclonal antibody, clone 5G6 (Cat # MAB10520) (green). Blue: DRAQ5 fluorescent DNA dye. Red: Actin filaments have been labeled with Alexa Fluor-555 phalloidin.

- Enzyme-linked Immunoabsorbent Assay

- Flow Cytometry

Flow cytometric analysis of HeLa cells using CCNB1 monoclonal antibody, clone 5G6 (Cat # MAB10520) (green) and negative control (purple).

Gene Info — CCNB1

Entrez GeneID	891
Gene Name	CCNB1
Gene Alias	CCNB
Gene Description	cyclin B1
Omim ID	123836
Gene Ontology	Hyperlink
Gene Summary	<p>The protein encoded by this gene is a regulatory protein involved in mitosis. The gene product complexes with p34(cdc2) to form the maturation-promoting factor (MPF). Two alternative transcripts have been found, a constitutively expressed transcript and a cell cycle-regulated transcript, that is expressed predominantly during G2/M phase. The different transcripts result from the use of alternate transcription initiation sites. [provided by RefSeq]</p>
Other Designations	G2/mitotic-specific cyclin B1

Pathway

- [Cell cycle](#)
- [p53 signaling pathway](#)

Disease

- [Adenocarcinoma](#)
- [Esophageal Neoplasms](#)
- [Genetic Predisposition to Disease](#)
- [Ovarian Neoplasms](#)