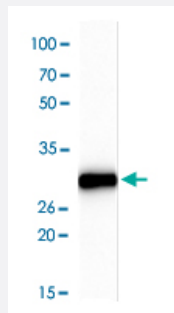


NCR1 monoclonal antibody, clone n1D9

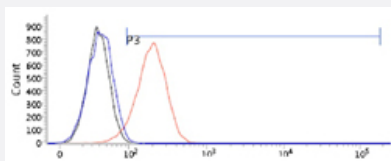
Catalog # MAB1052 Size 100 uL

Applications



Western Blot (Recombinant protein)

Western blot analysis of human NCR1 protein.



Flow Cytometry

Flow Cytometry of HeLa cells. The cell was stained with NCR1 monoclonal antibody, clone n1D9 at 2-5ug for 1x10⁶ cells (red). A Goat anti mouse IgG (Alexa fluor 488) was used as the secondary antibody. Mouse monoclonal IgG was used as the isotype control (blue), cells without incubation with primary and secondary antibody was used as the negative control (black).

Specification

Product Description	Mouse monoclonal antibody raised against partial recombinant NCR1.
Immunogen	Recombinant protein corresponding to amino acids 22-255 of human NCR1.
Host	Mouse
Reactivity	Human
Form	Liquid
Purification	Protein G affinity chromatography
Isotype	IgG1, kappa

Recommend Usage	ELISA Flow Cytometry Western Blot (1:1000) The optimal working dilution should be determined by the end user.
Storage Buffer	In PBS, pH 7.4 (10% glycerol, 0.02% sodium azide).
Storage Instruction	Store at 2°C to 8°C for 1 week. For long term storage, aliquot and store at -20°C to -80°C. Aliquot to avoid repeated freezing and thawing.
Note	This product contains sodium azide: a POISONOUS AND HAZARDOUS SUBSTANCE which should be handled by trained staff only.

Applications

- Western Blot (Recombinant protein)

Western blot analysis of human NCR1 protein.

- Enzyme-linked Immunoabsorbent Assay

- Flow Cytometry

Flow Cytometry of HeLa cells. The cell was stained with NCR1 monoclonal antibody, clone n1D9 at 2-5ug for 1x10⁶ cells (red). A Goat anti mouse IgG (Alexa fluor 488) was used as the secondary antibody. Mouse monoclonal IgG was used as the isotype control (blue), cells without incubation with primary and secondary antibody was used as the negative control (black).

Gene Info — NCR1

Entrez GeneID	9437
GeneBank Accession#	NM_004829
Protein Accession#	O76036
Gene Name	NCR1
Gene Alias	CD335, LY94, NK-p46, NKP46
Gene Description	natural cytotoxicity triggering receptor 1
Omim ID	604530
Gene Ontology	Hyperlink
Other Designations	lymphocyte antigen 94 homolog (activating NK-receptor; NK-p46)

Pathway

- [Natural killer cell mediated cytotoxicity](#)