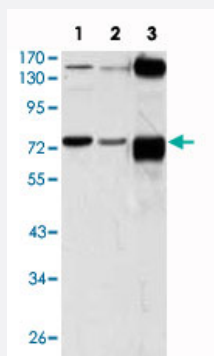


ATP2C1 monoclonal antibody, clone 4G12

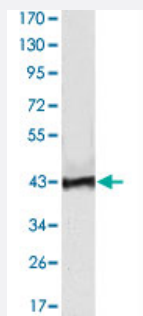
Catalog # MAB10496 Size 100 uL

Applications



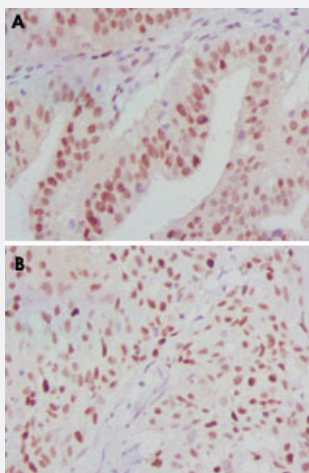
Western Blot (Cell lysate)

Western blot analysis using ATP2C1 monoclonal antibody, clone 4G12 (Cat # MAB10496) against A-431 (1), HeLa (2) and HEK293 (3) cell lysate.



Western Blot (Recombinant protein)

Western blot analysis using ATP2C1 monoclonal antibody, clone 4G12 (Cat # MAB10496) against human recombinant ATP2C1.



Immunohistochemistry (Formalin/PFA-fixed paraffin-embedded sections)

Immunohistochemical analysis of paraffin-embedded human ovarian cancer (A) and breast cancer (B) tissues using ATP2C1 monoclonal antibody, clone 4G12 (Cat # MAB10496) with DAB staining.

Product Description	Mouse monoclonal antibody raised against partial recombinant ATP2C1.
Immunogen	Recombinant protein corresponding to human ATP2C1.
Host	Mouse
Theoretical MW (kDa)	100
Reactivity	Human, Monkey
Form	Liquid
Isotype	IgG1
Recommend Usage	ELISA (1:10000) Western Blot (1:500-1:2000) Immunohistochemistry (1:200-1:1000) The optimal working dilution should be determined by the end user.
Storage Buffer	In ascites (0.03% sodium azide)
Storage Instruction	Store at 4°C. For long term storage store at -20°C. Aliquot to avoid repeated freezing and thawing.
Note	This product contains sodium azide: a POISONOUS AND HAZARDOUS SUBSTANCE which should be handled by trained staff only.

Applications

- Western Blot (Cell lysate)

Western blot analysis using ATP2C1 monoclonal antibody, clone 4G12 (Cat # MAB10496) against A-431 (1), HeLa (2) and HEK293 (3) cell lysate.

- Western Blot (Recombinant protein)

Western blot analysis using ATP2C1 monoclonal antibody, clone 4G12 (Cat # MAB10496) against human recombinant ATP2C1.

- Immunohistochemistry (Formalin/PFA-fixed paraffin-embedded sections)

Immunohistochemical analysis of paraffin-embedded human ovarian cancer (A) and breast cancer (B) tissues using ATP2C1 monoclonal antibody, clone 4G12 (Cat # MAB10496) with DAB staining.

- Enzyme-linked Immunoabsorbent Assay

Gene Info — ATP2C1

Entrez GeneID [27032](#)**Gene Name** ATP2C1**Gene Alias** ATP2C1A, BCPM, HHD, KIAA1347, PMR1, SPCA1, hSPCA1**Gene Description** ATPase, Ca⁺⁺ transporting, type 2C, member 1**Omim ID** [169600 604384](#)**Gene Ontology** [Hyperlink](#)

Gene Summary The protein encoded by this gene belongs to the family of P-type cation transport ATPases. This magnesium-dependent enzyme catalyzes the hydrolysis of ATP coupled with the transport of the calcium. Defects in this gene cause Hailey-Hailey disease, an autosomal dominant disorder. Alternatively spliced transcript variants encoding different isoforms have been identified. [provided by RefSeq]

Other Designations ATP-dependent Ca(2+) pump|ATPase 2C1|ATPase, Ca(2+)-sequestering|HUSSY-28|calcium-transporting ATPase 2C1|secretory pathway Ca2+/Mn2+ ATPase