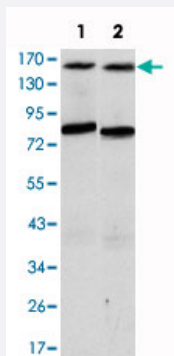


# ANIB1 monoclonal antibody, clone 5H3

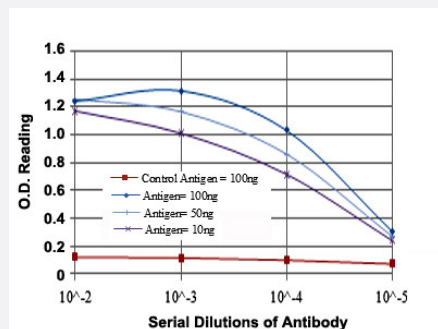
Catalog # MAB10483      Size 100 uL

## Applications



### Western Blot (Cell lysate)

Western blot analysis using ANIB1 monoclonal antibody, clone 5H3 (Cat # MAB10483) against T-47D (1) and MCF-7 (2) cell lysate.



### Enzyme-linked Immunoabsorbent Assay

ELISA detection with ANIB1 monoclonal antibody, clone 5H3 (Cat # MAB10483).

## Specification

Product Description	Mouse monoclonal antibody raised against partial recombinant ANIB1.
Immunogen	Recombinant protein corresponding to human ANIB1.
Host	Mouse
Theoretical MW (kDa)	155
Reactivity	Human
Form	Liquid

Isotype	IgG1
Recommend Usage	ELISA (1:10000) Western Blot (1:500-1:2000) The optimal working dilution should be determined by the end user.
Storage Buffer	In ascites (0.03% sodium azide)
Storage Instruction	Store at 4°C. For long term storage store at -20°C. Aliquot to avoid repeated freezing and thawing.
Note	This product contains sodium azide: a POISONOUS AND HAZARDOUS SUBSTANCE which should be handled by trained staff only.

## Applications

- Western Blot (Cell lysate)

Western blot analysis using ANIB1 monoclonal antibody, clone 5H3 (Cat # MAB10483) against T-47D (1) and MCF-7 (2) cell lysate.

- Enzyme-linked Immunoabsorbent Assay

ELISA detection with ANIB1 monoclonal antibody, clone 5H3 (Cat # MAB10483).

## Gene Info — ANIB1

Entrez GeneID	<a href="#">116833</a>
Gene Name	ANIB1
Gene Alias	AIB, AIB1
Gene Description	aneurysm, intracranial berry 1
Omim ID	<a href="#">105800</a>
Gene Ontology	<a href="#">Hyperlink</a>
Other Designations	-